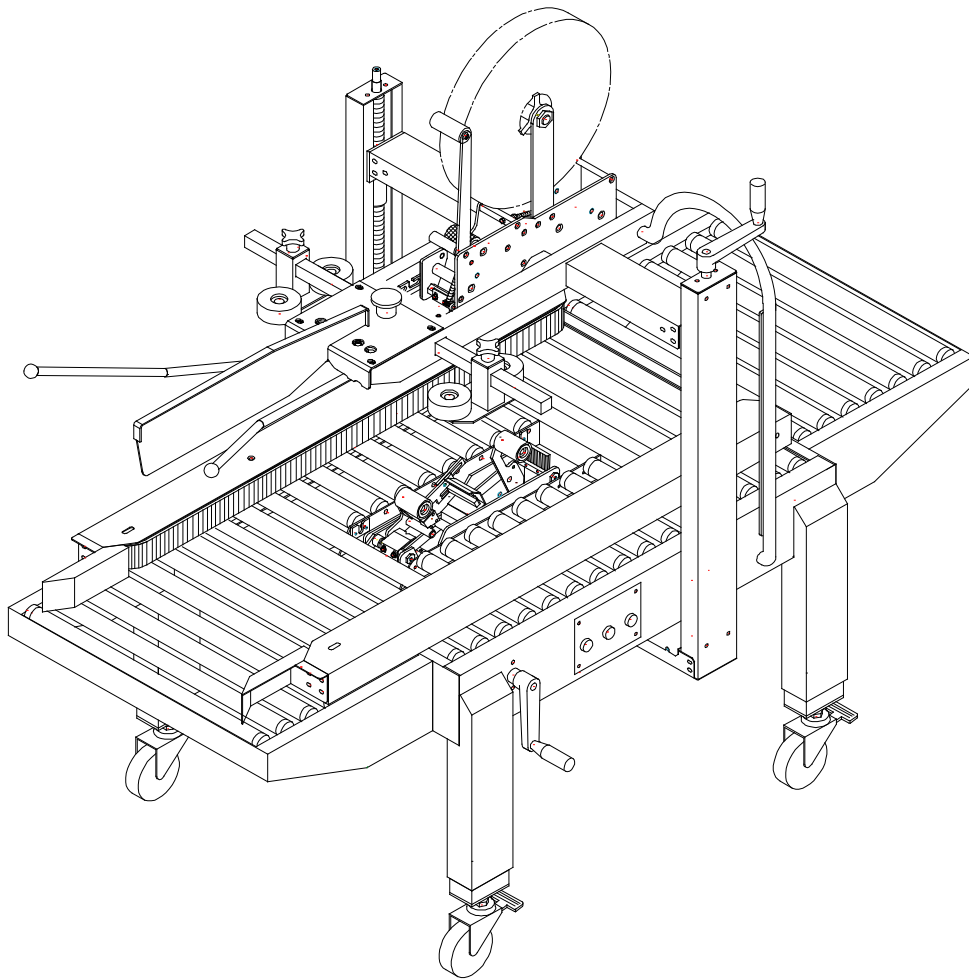


# SB-2/3EXN

---

Industrial  
Case Taping System

## User Guide



---

**EASTEY**<sup>®</sup>



# SB-2/3EXN

## Industrial Case Taping System

### User Guide

Revised 03/09/2012

P/N 5001683 Rev A

#### Copyright and Trademarks

Copyright ©2012 Eastey Enterprises

All rights reserved. All trademarks and registered names are the property of their respective owners.

Eastey  
7041 Boone Ave. N  
Brooklyn Park, MN 55428

Phone: (763) 795-8856; Fax (763) 795-8867; 1-800-877-5658  
[www.eastey.com](http://www.eastey.com)



# Contents:

- Safety ..... 7**
- Introduction ..... 9**
  - General System Description..... 9
  - Specifications ..... 10
  - Options..... 10
- Installation ..... 12**
  - Location Requirements ..... 13
- Operation ..... 15**
  - Loading the Tape Cartridges..... 15
  - Height and Width Adjustments ..... 17
  - Belt Adjustment ..... 18
  - Power ..... 19
  - Control Panel ..... 19
- Maintenance ..... 21**
  - Rollers ..... 21
  - Cutting Knives ..... 21
  - Changing Knife Blades..... 21
- Troubleshooting ..... 25**
- Parts List..... 27**
  - Electrical..... 27
  - Side Belt Assembly ..... 31
  - Vertical Column..... 34
  - Machine Body ..... 37
  - Tape Cartridge ..... 39
- Warranty Statement ..... 44**
- Customer Support..... 47**



# Safety

Before installing, operating or servicing this equipment, please read the following precautions carefully:

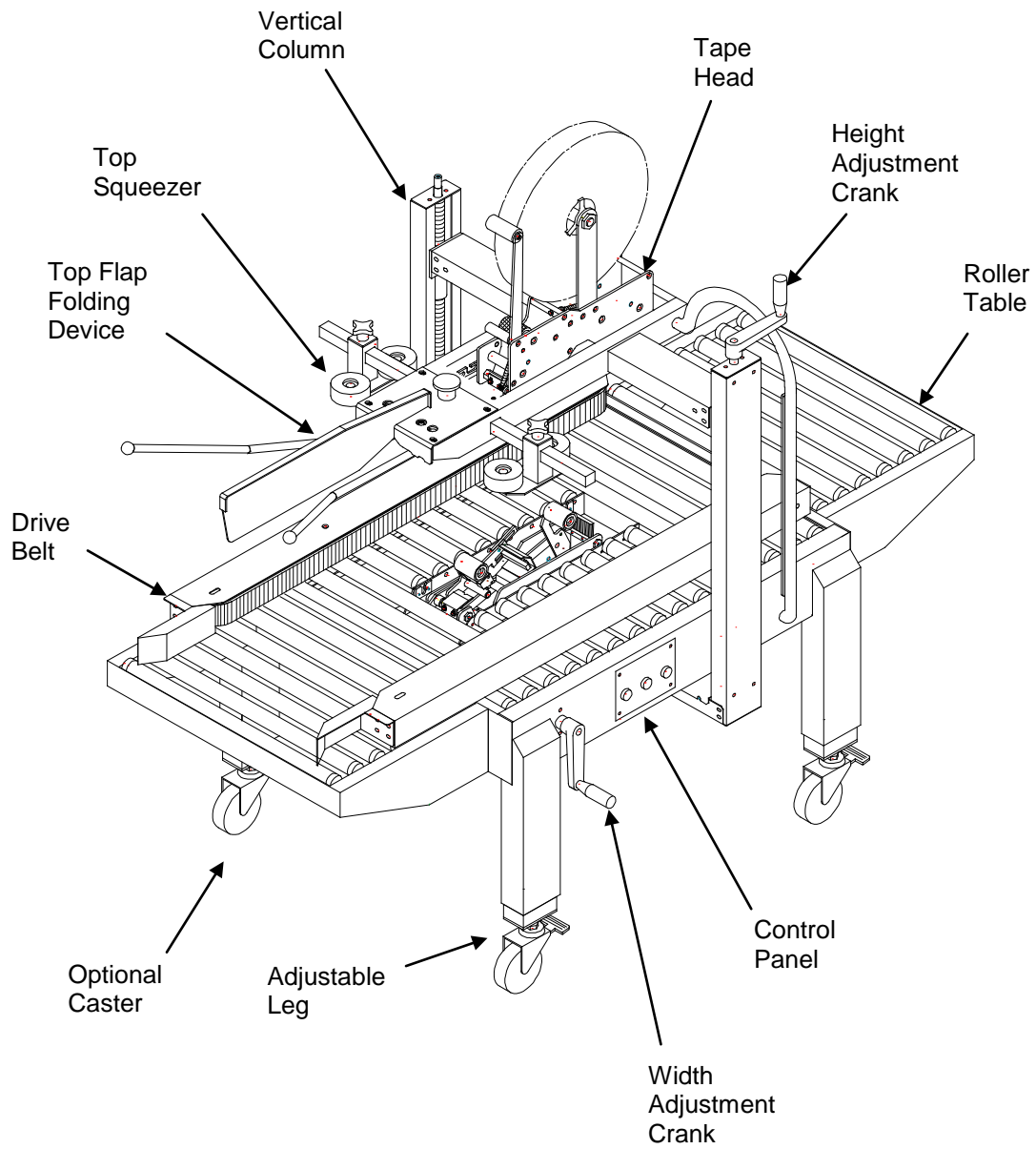
- This machine is equipped with moving belts. Do not place hands near the rear of this unit when the belts are moving as fingers may be pinched where belts enter the frame. We suggest the use of a roller-type exit conveyor or pack table for your cases. Always remove boxes after they clear the exit end of the machine.
- Observe caution when near the tape applying cartridges or when threading tape. The knife is very sharp, automatically operated and is linked to the wipe down rollers.
- Do not attempt to open or work on the electrical box, junction boxes or other electrical components of the unit without first disconnecting power to the machine. Electrical shock hazard exists if power is not disconnected.
- Do not by-pass any factory-designed safety features such as knife guards, interlocks, switches, etc.
- Do not place hands or body inside the confines of the machine unless the head mechanism is securely fastened, and the electrical supply is shut off.
- Never provide service or clear a box jam when machine is running.
- When feeding a box into the unit, always hold down the box top and present the box to unit. Release hands as soon as the belts begin to take the box.
- Do not wear loose clothing such as ties, scarves, jewelry etc. Long hair should be pulled back and/or covered while operating this machine.





# Introduction

## General System Description



## Specifications

Model	SB-2/3EXN
Tape	1.5" (36mm) or 2" (50mm)
Belt speed	23m/min
Capacity	(L) 4.7in to unlimited (W) 3.9in to 19.5in (100mm to 500mm) (H) 4.7in to 19.5in (120mm to 500mm)
Power consumption	450W
Machine size	(L) 76.4in (1713mm) (W) 33.6in (854mm) (H) 53.1in (1350mm)
Machine net weight	375lbs (160kg)
Sound level	60db

## Options

- Stainless Steel
- 3" tape head



# Installation

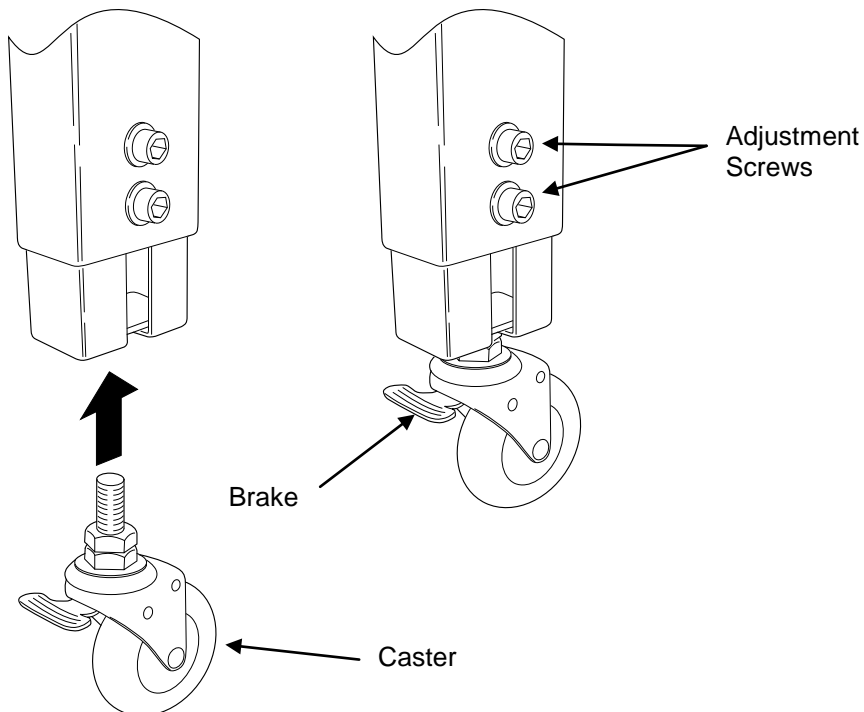
Carefully unpack the case taper from the shipping carton.

Remove the shipping bolts that secure the Case Taper to the shipping pallet. Lift the Case Taper off the pallet.

**CAUTION!** The SB-2/3EXN Case Taper is a very heavy piece of equipment and will require a forklift or several people to move safely off the shipping pallet.

Install the 4 casters on the Case Taper legs. The casters simply screw into the threaded holes on the bottom of each leg.

To adjust the leg height, loosen the screws on each leg and slide the insert up or down.



**CAUTION!** Obviously you will have to raise the Case Taper off the floor to install the casters. Use proper equipment when lifting the case taper. Ensure the SB-2/3EXN Case Taper is secure and will not shift while the casters are being installed.

To move the SB-2/3EXN to the desired location you will need to use a pallet jack or fork lift. If you have purchased the optional locking casters you can move the taper easily over a smooth flat surface.

## Location Requirements

When installing the SB-2/3EXN Case Taper please be aware of the following considerations:

1. The mounting surface is flat and level.
2. Conveyor or packing table height.
3. Alignment with packaging line.

When the SB 2/3-EXN Case Taper is positioned in the operating location you will need access to:

1. The power switch.
2. Height and width adjustments.
3. Tape loading (Both upper and lower tape cartridges).

A packing table may be provided at the in feed end where the packer can fill boxes and close the flaps prior to feeding the boxes into the machine. It is also convenient to have a pack table at the exit end of the taper.

It is essential that the table and conveyor be at the machine bed height.

The machine should be placed on a flat, level floor so that it does not rock or move. We recommend that the machine be securely locked in place when used.



# Operation

## Loading the Tape Cartridges

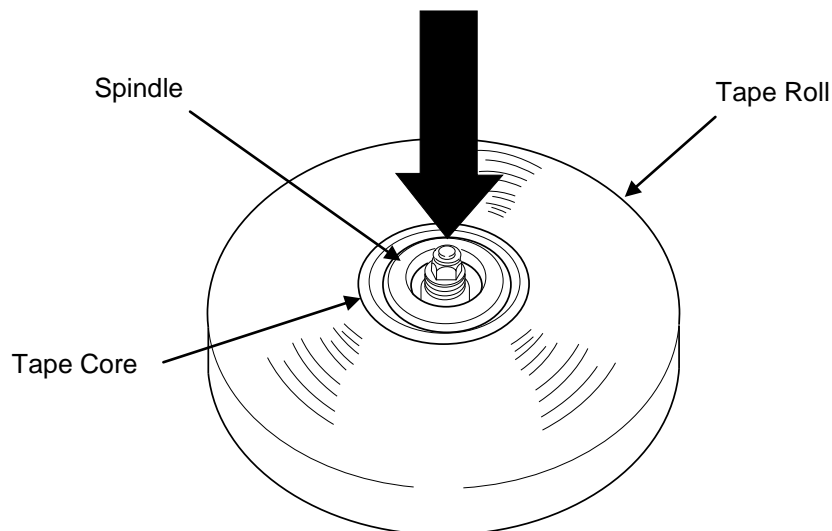
Turn the main power switch to “Off” and disconnect the power.

**CAUTION!** To avoid personnel injury, remove the tape cartridge before loading tape.

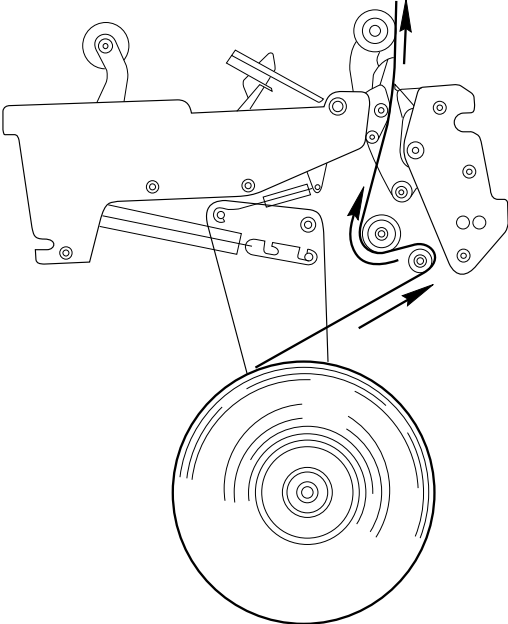
**When handling the tape cartridge be careful to avoid contact with the tape cutting blade.**

After the taping cartridge has been removed push the tape roll onto the tape core assembly.

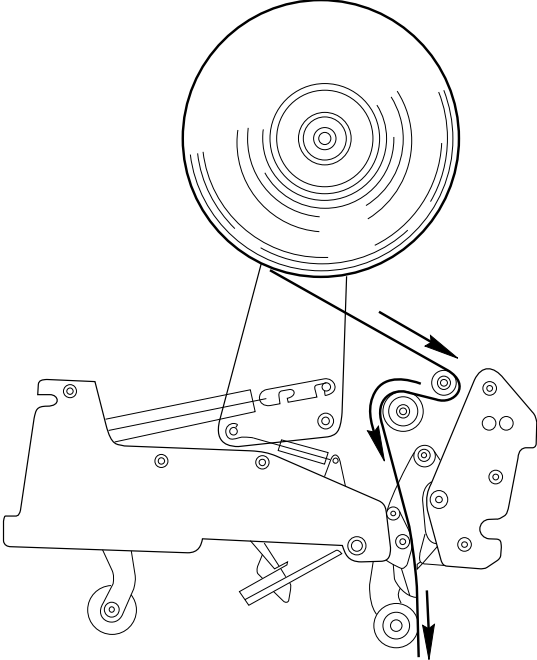
**NOTE:** Make sure the tape roll is pushed all the way on the tape core assembly.



Carefully thread the new tape according to the following diagram.



**Bottom Cartridge**



**Upper Cartridge**

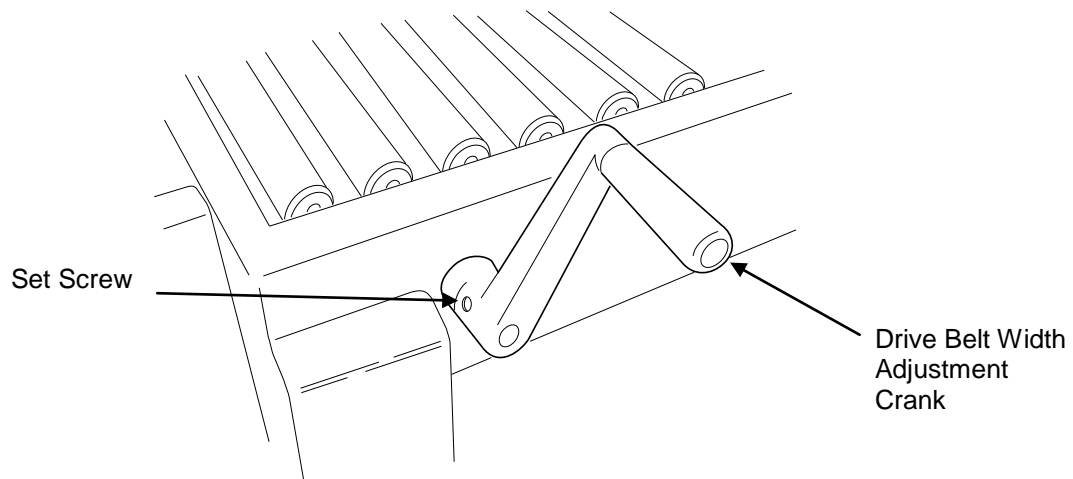
Return the tape cartridge to the operation position.



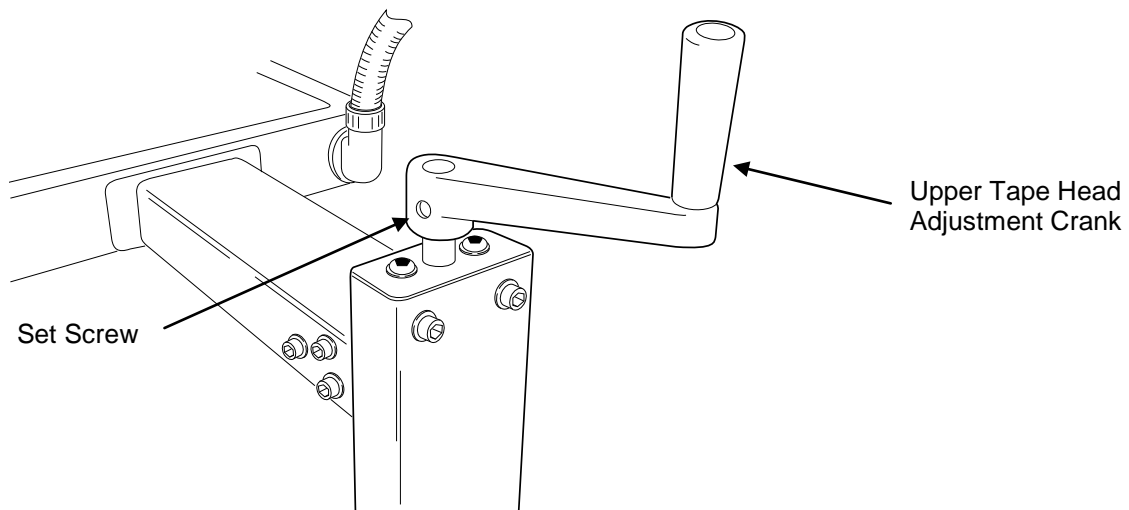
## Height and Width Adjustments

With the power off, place an appropriate size carton in the Case Sealer.

Use the drive belt width adjustment crank to set the drive belt width to the correct box width.

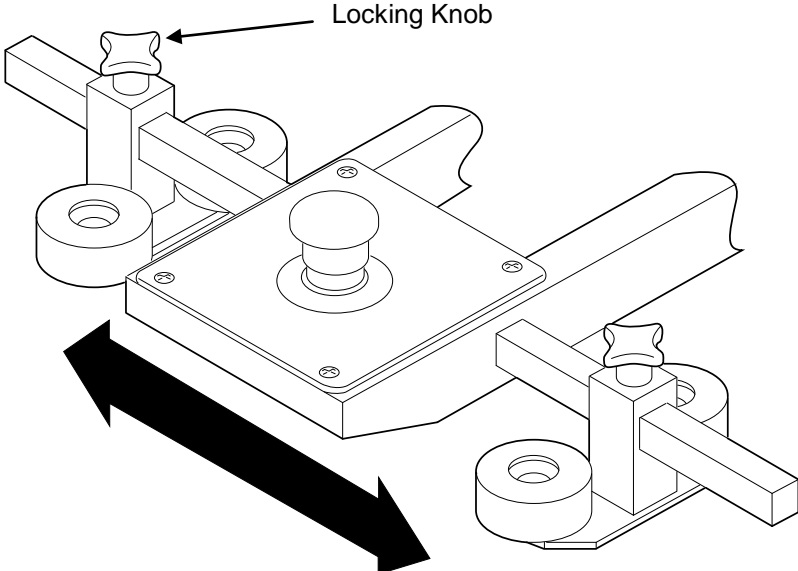


Use the height adjustment crank to set the upper tape head to the correct box height.



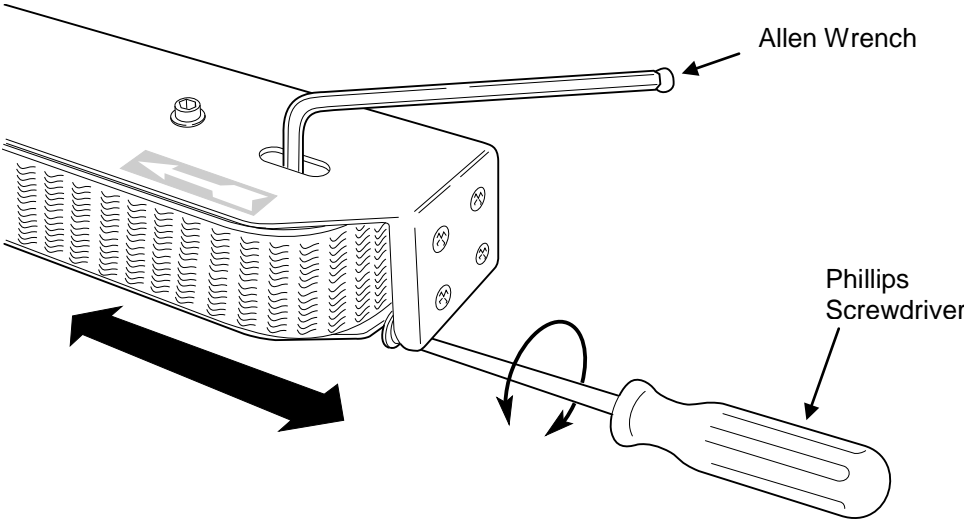
The height and width cranks can be mounted on either side of the machine by loosening the set screw and removing the crank. Mount the crank on the opposite side and re-tighten the set screw.

Loosen the locking knobs on the top squeezer alignment rollers to set the top width to the correct box width and re-tighten the locking knobs. This will insure the box stays centered.



### Belt Adjustment

You do not have to remove the drive belt cover to adjust the drive belt. To adjust the belt, use an allen wrench and loosen the belt nut. Adjust the belt to a suitable tension by turning the adjustment screw with a phillips screwdriver. Re-tighten the belt nut.



## Power

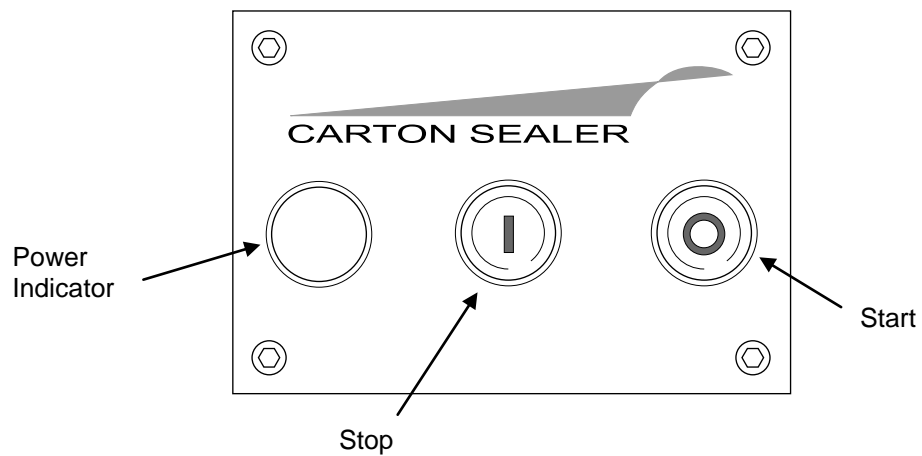
Plug the power supply cord into a properly wired and grounded outlet.

Press start button.

**CAUTION!** When the power is turned on be aware of moving parts and belts

## Control Panel

When the main power switch is in the "ON" position the power lamp should be illuminated.





# Maintenance

The SB-2/3EXN Industrial Case Taping System will provide many hours of maintenance free operation. There are a few items that may require attention from time to time.

## Rollers

Make sure rollers stay clean and grease free. If you should have to clean the rollers simply wipe them down with a clean lint free cloth. If a more thorough cleaning is necessary wipe the rollers down with a mild detergent and water and let dry. **Never use harsh or abrasive cleaners or chemical agents when cleaning the rollers.**

## Cutting Knives

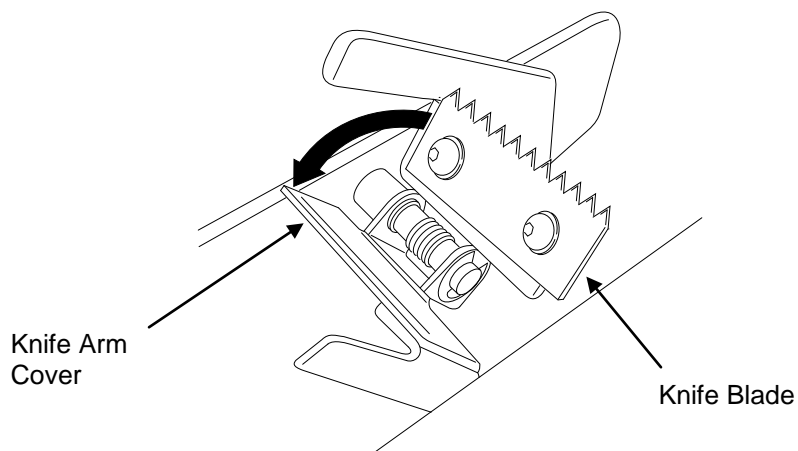
Occasionally inspect the cutting knives to ensure they are clean and free of adhesive residue. Make sure the cutting knife is sharp by inspecting cuts in the tape. Cuts should be straight and neat. If the quality of cuts is eroding, the knife blade is dull and should be replaced.

## Changing Knife Blades

**CAUTION!** Always be aware of the cutting edges while replacing the knife blades. Handle the knife blades carefully.

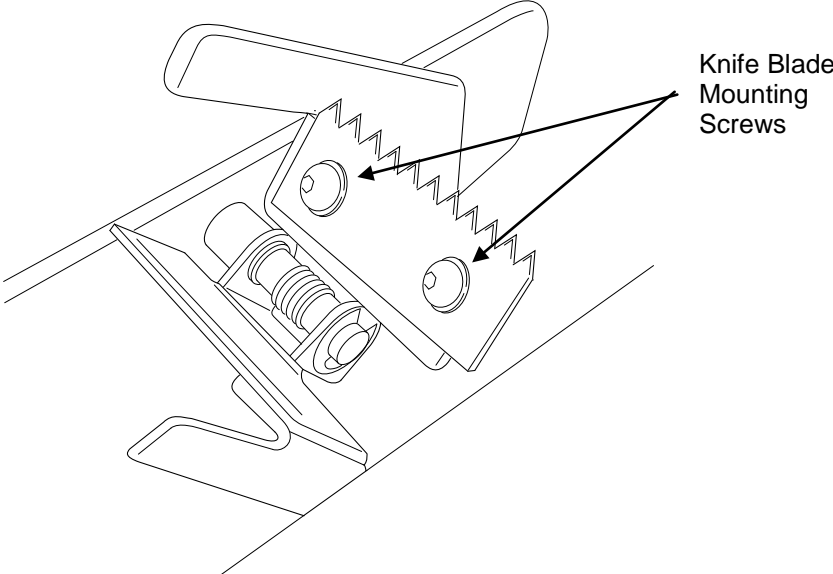
Turn off and unplug the taper.

Open knife arm cover.

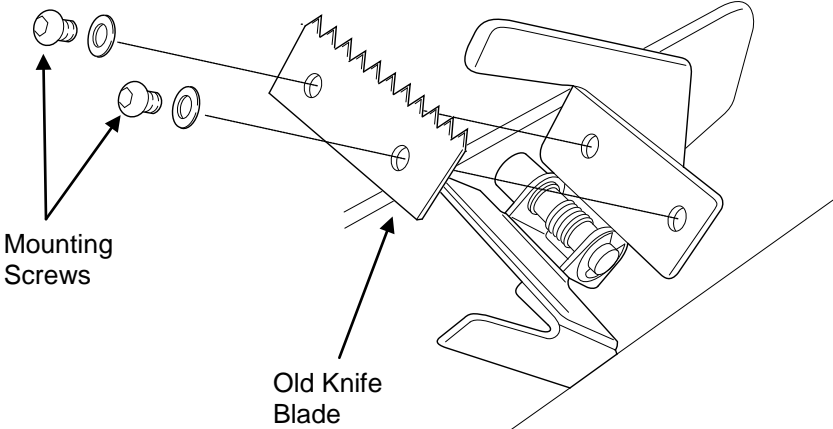


For the upper tape cartridge remove the cartridge from the machine before changing the knife blade. The lower cartridge can remain in the taper while changing the lower knife blade.

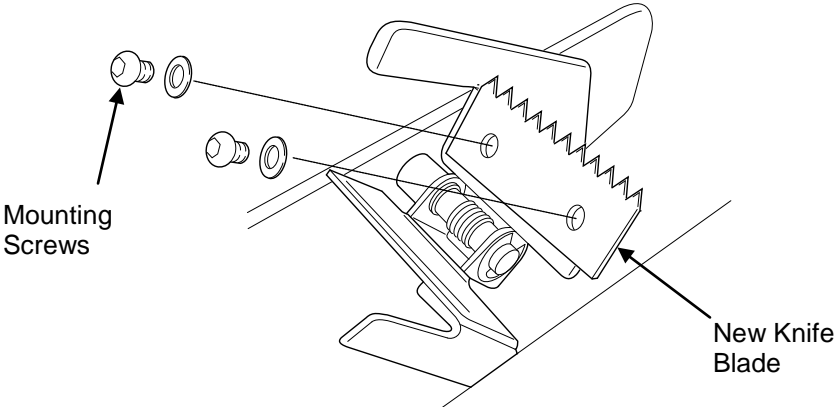
Remove the two knife blade mounting screws.



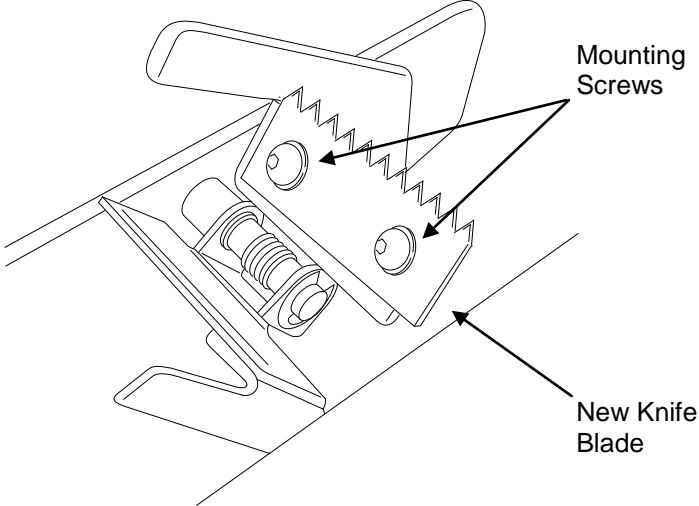
Remove the old blade.



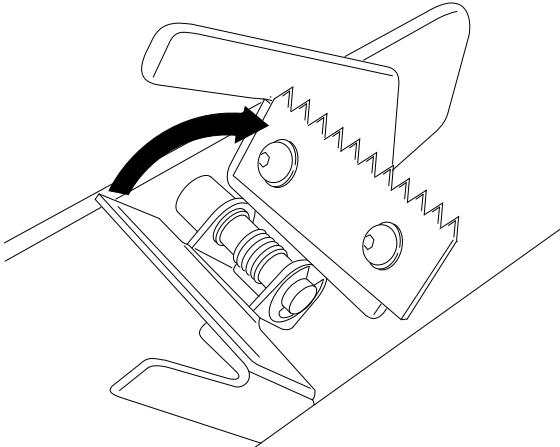
Install a new knife blade.



Replace mounting screws.



Close knife arm cover.



Plug in and turn on the SB-2/3EXN Case Taper to resume operation.





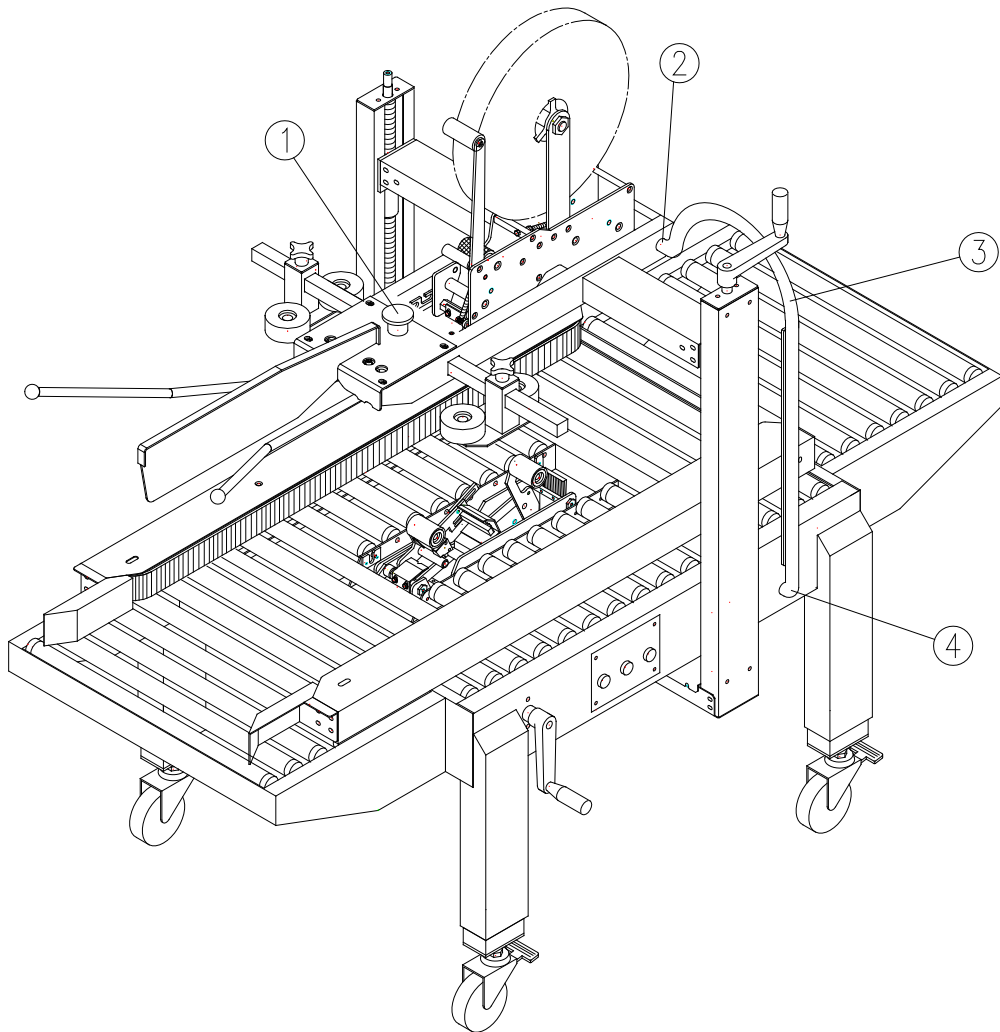
# Troubleshooting

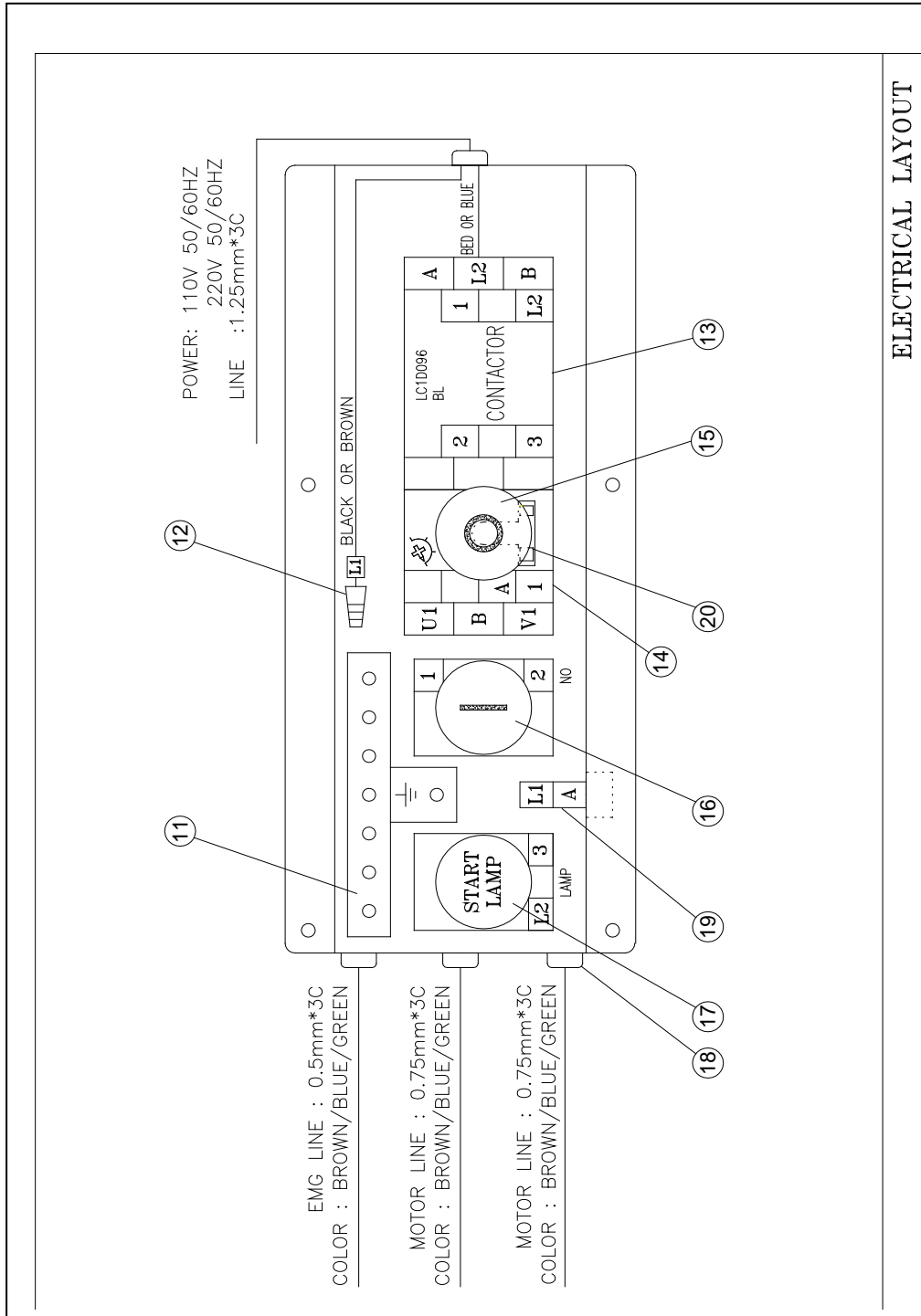
Symptom	Action
Taper will not start	<ul style="list-style-type: none"><li>• Check power input</li><li>• Release the Emergency Stop button</li><li>• Press the Start button to release overload</li><li>• Replace Fuse</li></ul>
Stuck Carton	<ul style="list-style-type: none"><li>• Check drive belt width adjustment</li><li>• Check for proper height adjustment</li></ul>
Uneven or Poor Tape Cuts	<ul style="list-style-type: none"><li>• Replace cutting knives</li><li>• Adjust knife arm spring tension</li><li>• Adjust wipe roller spring tension</li></ul>



# Parts List

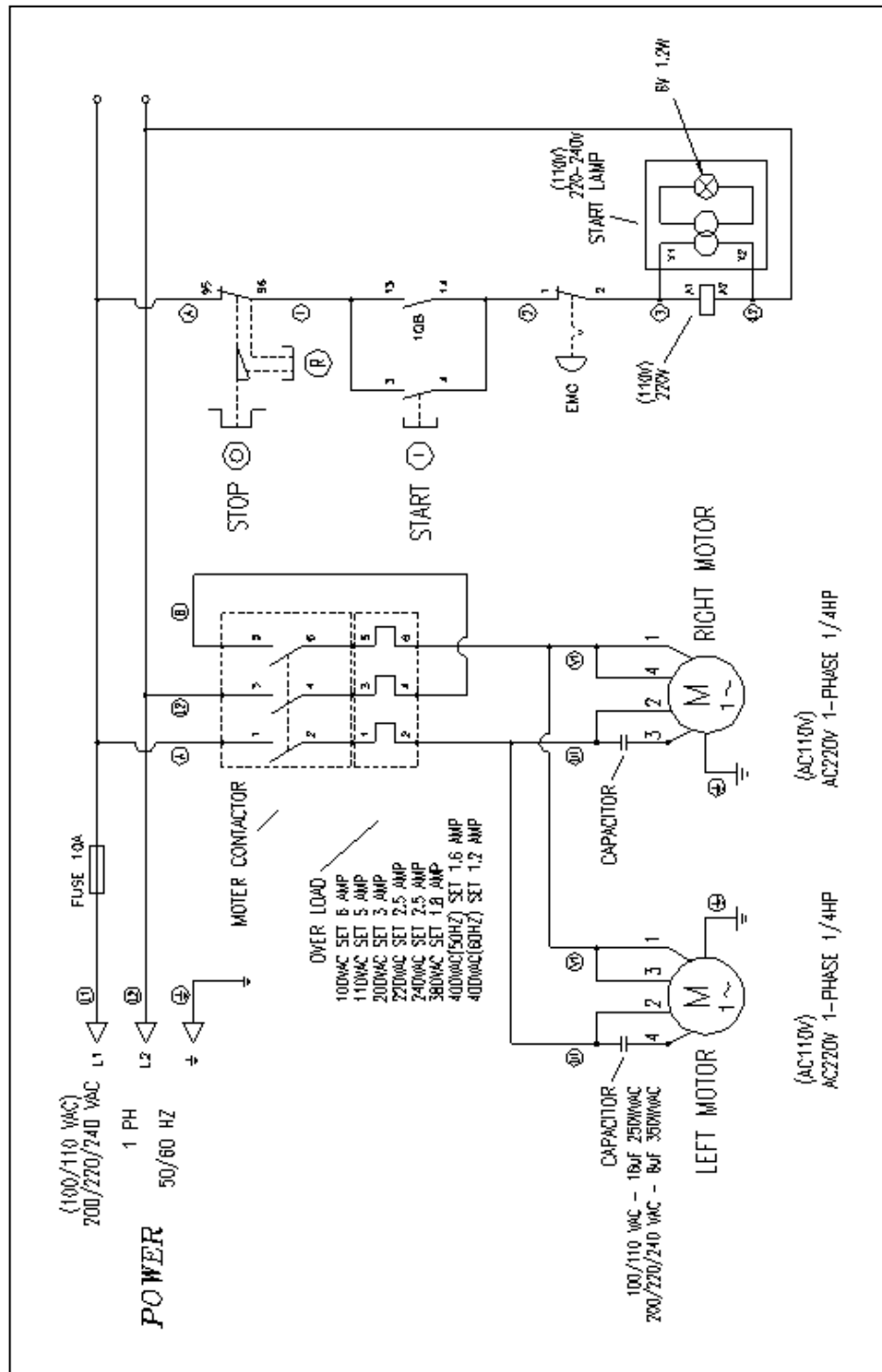
## Electrical





ELECTRICAL LAYOUT

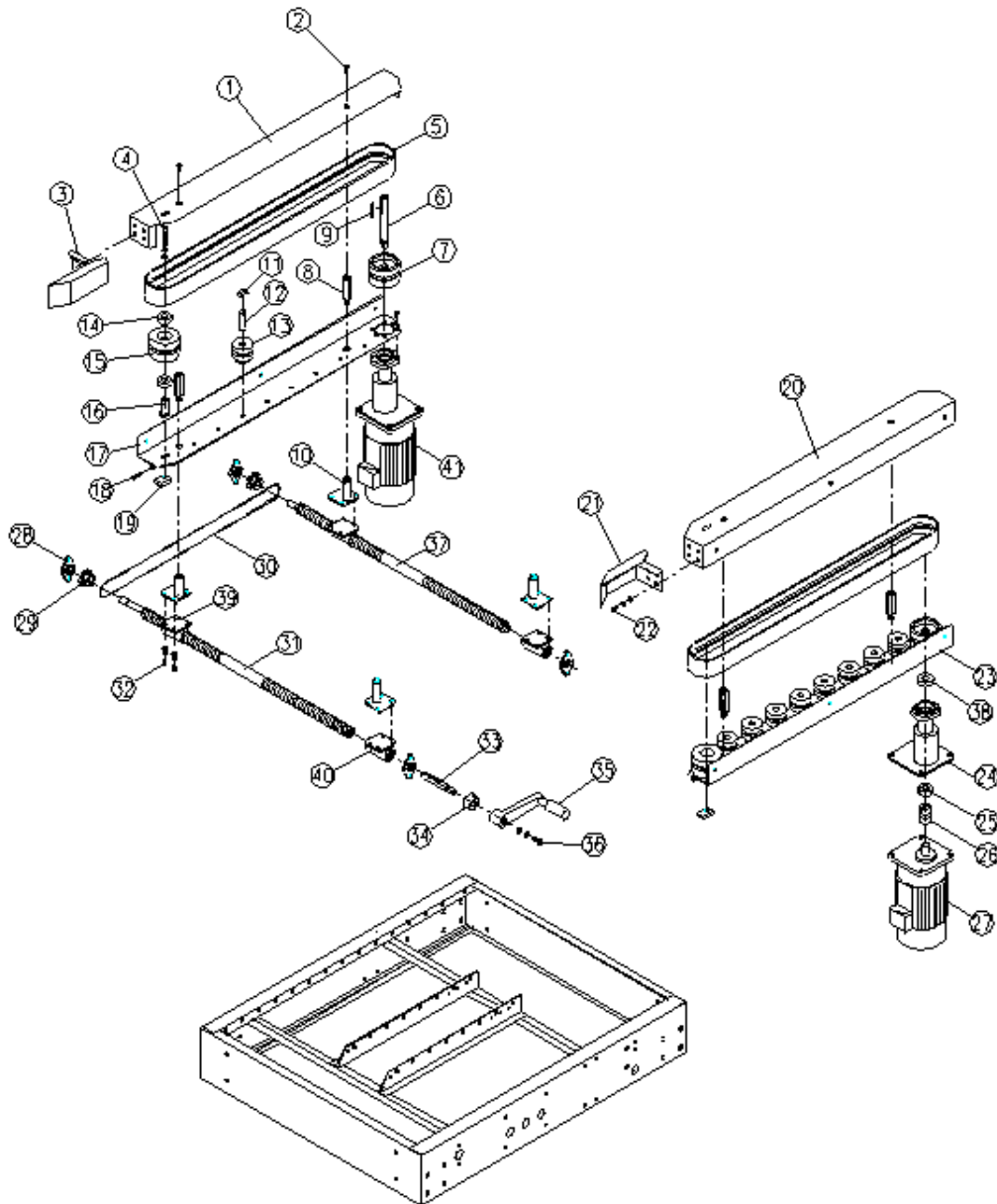
Electrical Layout



Electrical Layout Cont.

KEY NO	PART NO.	DESCRIPTION	Q'TY
1	7155BC20	EMG. SWITCH	1
	7158BZ12	BUTTON SEAT CONTACTOR NCx1	1
2	7066P001	1/2" CONNECTOR	1
3	7065C062	1/2" PROTECT TUBE	1
4	7066C064-1	1/2" 90° CONNECTOR	1
11	70560601	TERMINAL BLOCKS TB6P	1
12	7032SW01	CONNECTOR	1
13	71570002-01	BREAKER LC1-D09F7 110V	1
	71570003-01	BREAKER LC1-D09M7 220V	1
14	71570002-02	OVERLOAD PROTECTOR LR3-D106(4-6A)(110V)	1
	71570003-02	OVERLOAD PROTECTOR LR3-D086(2.5-4A)(220V)	1
15	7155AL01	BUTTON	1
16	7155AA03	BUTTON	1
	7158AZ01	CONTACTOR NOX1	1
17	7151AV01	POWER LAMP 220V	1
	7150AV01	BLANKIG PLUG	1
	7151AV02	POWER LAMP 110V	1
	7150AV01	BLANKIG PLUG	1
18	7025AG16	FIXED SEAT	4
19	72561003	FUSE	1
	7250FH01	FUSE SEAT	1
20	7155AL01-1	ENCLOSURE	1

# Side Belt Assembly

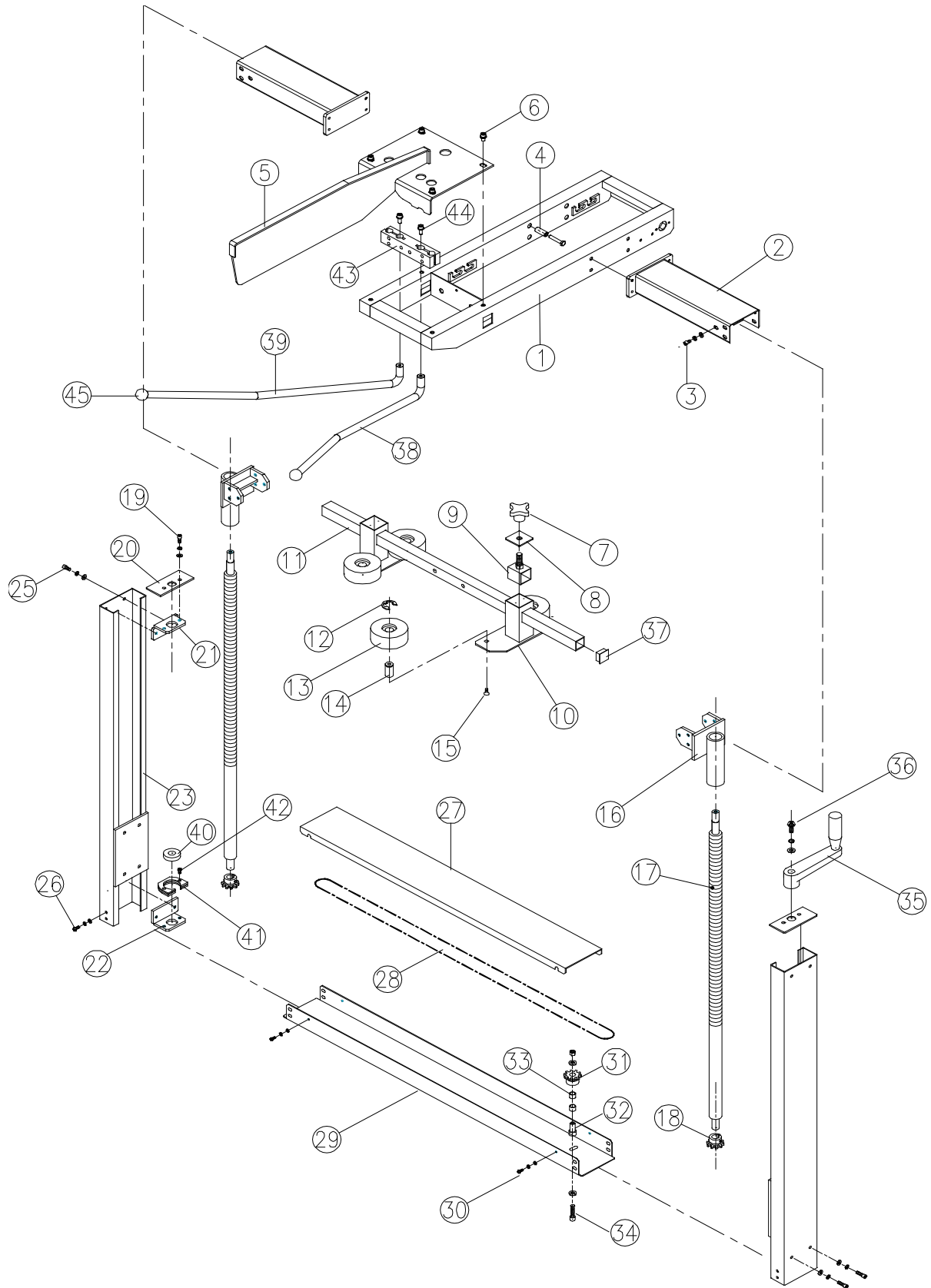


KEY NO	PART NO.	DESCRIPTION	Q'TY
1	CA3006L0	SIDE BELT COVER	1
2	10170610	SCREW M6*10L & S.W & W	4
3	CA3010L0	GUIDE PLATE	1
4	10100870	SCREW M8*70L & W	2
5	CA302700	BELT	2
6	CA30250A	MOTOR SHAFT	2
7	CA301900	PULLEY DRIVER	2
8	CA301700	SPEDIAL SCREW	4
9	10925300	KEY 5*5	2
10	CA301600	SUPPORT SHAFT	4
11	11301200	RING STW-12	16
12	CA301400	PULLEY SHAFT	16
13	CA301300	PLASTIC PULLEY	16
14	30300030	BEARING 6003ZZ	4
15	CA301100	PULLEY FOLLOWER	2
16	CA301200	PULLEY SHAFT	2
17	CA3005L0	SUPPORT COLUMN	1
18	10130545	SCREW M5*45L	2
19	CA301800	ADJUSTMLNT BLOCK	2
20	CA3006R0	SIDE BELT COVER	1
21	CA3010R0	GUIDE PLATE	1
22	10100612	SCREW M6*12L & S.W & W	8
23	CA3005R0	SUPPORT COLUMN	1
24	CA302900	MOTOR SEAT	2
25	30300030	BEARING 6003ZZ	2
26	CA303000	UNIVERSAL JOINT	2
27	745111R1	MOTOR 110V/60HZ,T18:1	1
	745122R1	MOTOR 220V/60HZ,T18:1	1
	745122R2	MOTOR 220V/50HZ,T15:1	1
	745124R2	MOTOR 240V/50HZ,T15:1	1
	745138R1	MOTOR 380V/50HZ,T15:1	1
	745140R1	MOTOR 400V/50HZ,T15:1	1
28	CA302000	SHAFT SEAT	4



29	CA302200	CHAIN SPPOCKET	2
30	3240S355	CHAIN	1
31	CA300700	SPINDLE WIDTH ADJUSTMENT	1
32	10100612	SCREW M6*12L & S.W & W	8
33	CA300900	SHAFT	1
34	CA303200	HANDLE RING	2
35	CA201500	HANDLE CRANKK ARM	1
36	10100620	SCREW M6*20L & S.W & W	1
37	CA300800	SPINDLE WIDTH ADJUSTMENT	1
38	30302031	BEARING 6203ZZ	2
39	CA3015R0	SPINDLE SUPPORT	2
40	CA3015L0	SPINDLE SUPPORT	2
41	745111L1	MOTOR 110V/60HZ,T18:1	1
	745122L1	MOTOR 220V/60HZ,T18:1	1
	745122L2	MOTOR 220V/50HZ,T15:1	1
	745124L2	MOTOR 240V/50HZ,T15:1	1
	745138L1	MOTOR 380V/50HZ,T15:1	1
	745140L1	MOTOR 400V/50HZ,T15:1	1

# Vertical Column

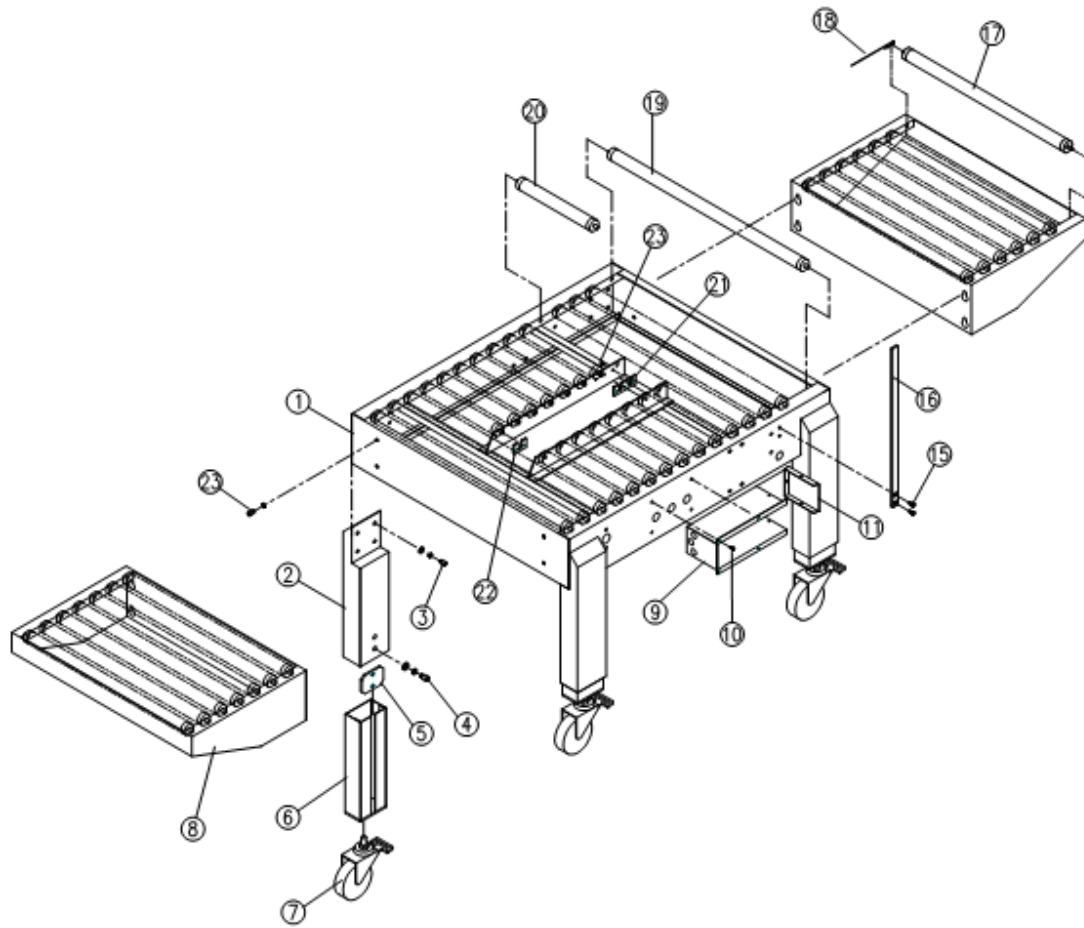


KEY NO	PART NO.	DESCRIPTION	Q'TY
1	KA1104460	TAPING SET SUPPORT	1
2	CA10110A	SUPPORT SET	2
3	10100612	SCREW M6*12L & S.W & W	12
4	CA101500	LINING	8
5	KA1104470	FOLDING DEVICE PLATE	1
6	10140406	SCREW M4*6L	4
7	CA101600	HANDLE KNOB	2
8	CA100900	LOCKING BRACKET	2
9	CA100800	SCREW KNOB	2
10	CA100500	COMPRESSION ROLLER SEAT	2
11	CA101000	SUPPORT BAR	1
12	11301700	RING STW-17	4
13	CA100600	COMPRESSION ROLLER	4
14	CA100700	COMPRESSION ROLLER SHAFT	4
15	10140610	SCREW M6*10L	4
16	CA200900	SPINDLE SUPPORT	2
17	CA200700	HEIGHT ADJUSTMENT SPINDLE	2
18	CA200800	CHAIN WHEEL	2
19	10100612	SCREW M6*12L & S.W & W	4
20	CA20040A	COVER PLATE	2
21	CA200200	SET PLATE	2
22	CA200300	SET PLATE	2
23	CA20010A	COLUMN	2
25	10100612	SCREW M6*12L & S.W & W	8
26	10100612	SCREW M6*12L & S.W & W	8

## 36 Illustrated Parts List

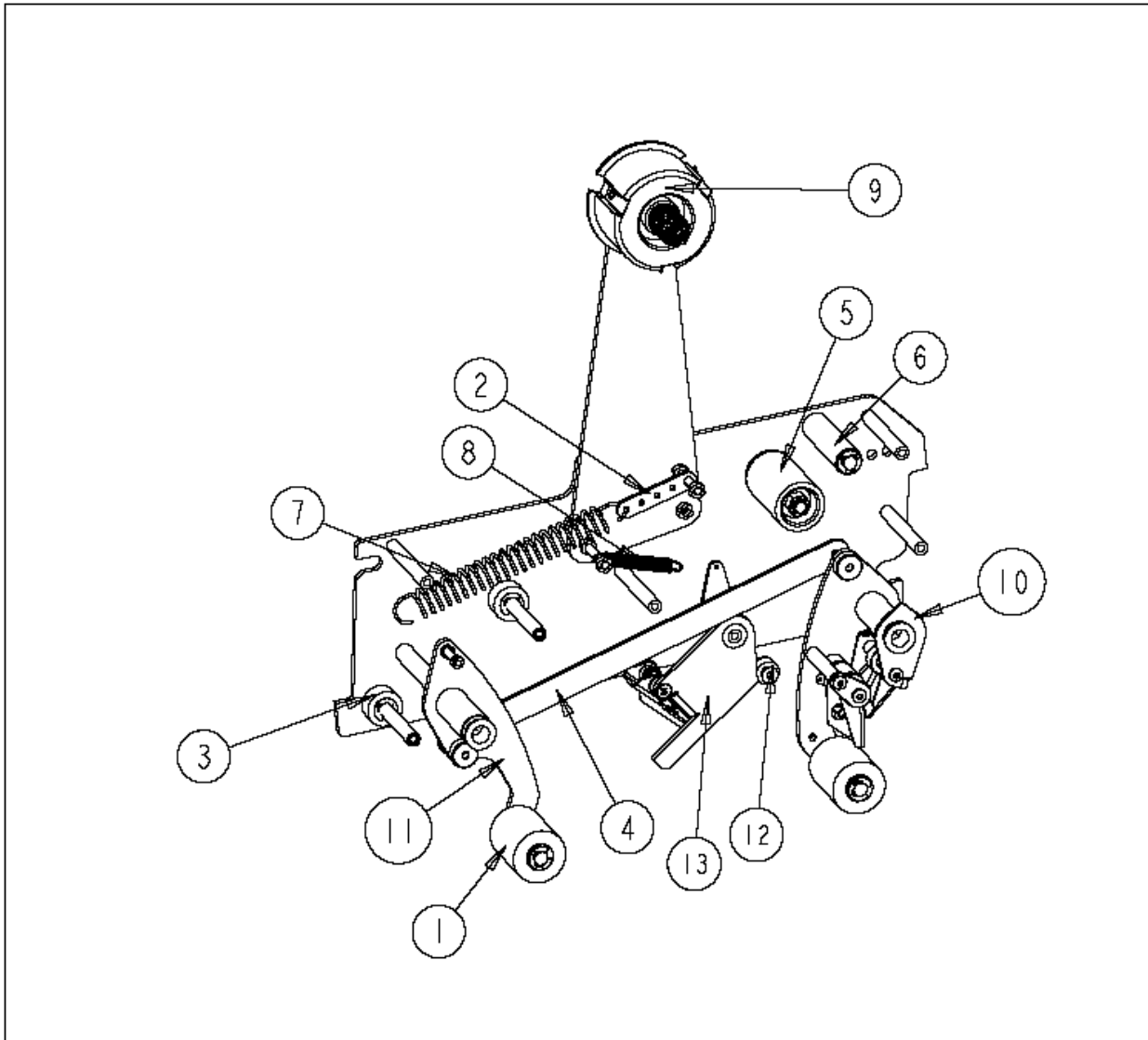
27	CA201200	CHAIN PLATE	1
28	3240S356	CHAIN	1
29	CA201100	CHAIN COVER	1
30	10190410	SCREW M4*10L & S.W & W	4
31	CA201600	CHAIN WHEEL	1
32	CA201700	CHAIN WHEEL SHAFT	1
33	CT212100	BUSH Ø10 x Ø12 x 10L	2
34	10100635	SCREW M6*35L & S.W & NUT	1
35	CA201500	HANDLE CRANK ARM	1
36	10170816	SCREW M8*16L & S.W & W	1
37	91350001	RUBBER PLUG	2
38	KA0302640	FOLDING DEVICE	1
39	KA0302650	FOLDING DEVICE	1
40	30302020	BEARING 6202ZZ	2
41	CA304500	BEARING SEAT	2
42	10140616	SCREW M6*16L	4
43	KA0302660	FOLDING DEVICE SEAT	1
44	10100616	SCREW M6*16L & S.W & W	2
45	91220001	HAHDLE KNOB	2

# Machine Body

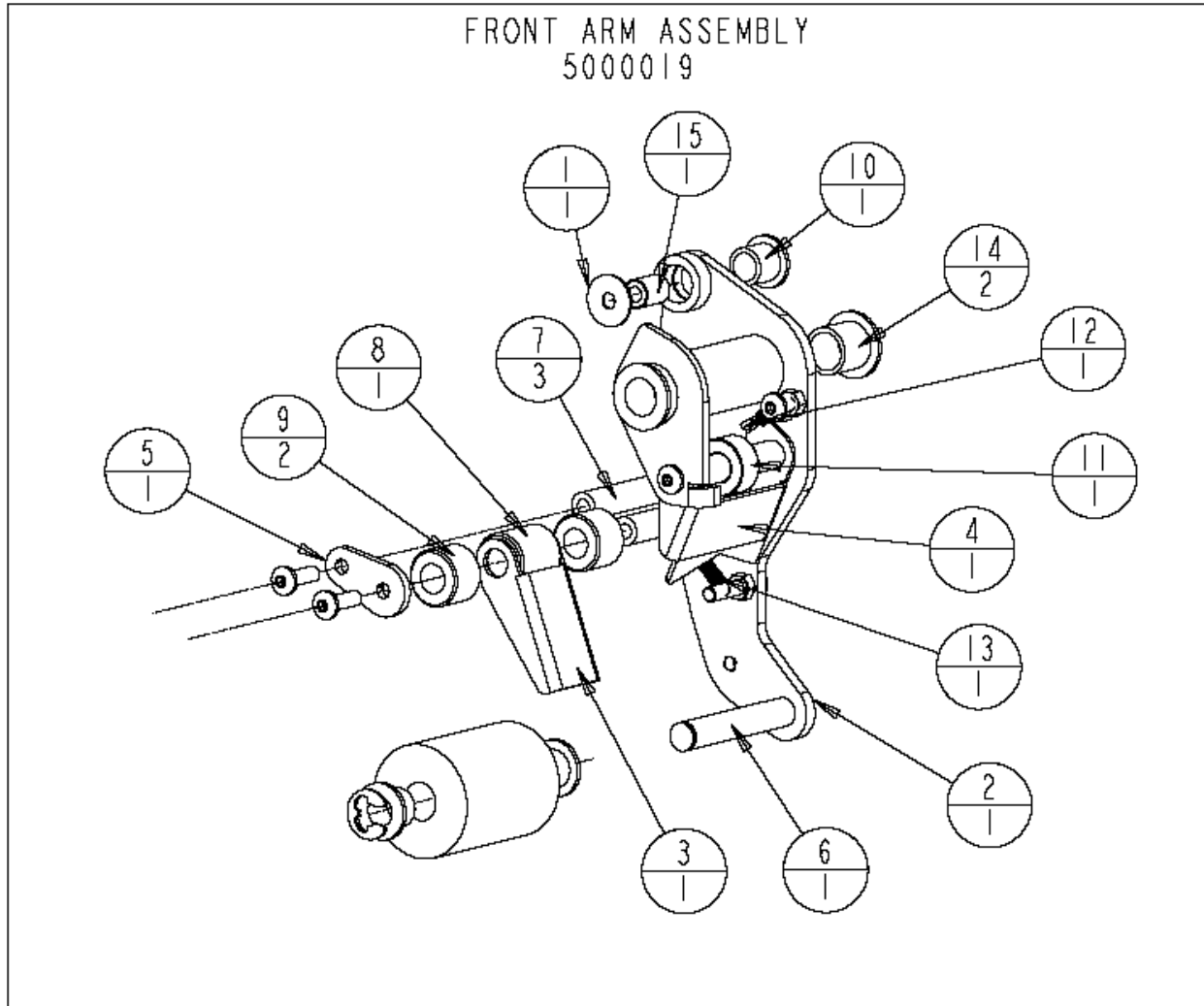


KEY NO	PART NO.	DESCRIPTION	Q'TY
1	CA30010A	MACHINE FRAME	1
2	CA300200	MACHINE LEG	4
3	10100816	SCREW M8*16L & S.W & W	16
4	10101016	SCREW M10*16L & S.W & W	8
5	CA30040A	CLAMP	4
6	CA30030A	ADJUSTABLE LEG	4
7	9201L501	CASTER	4
8	CA400100	ROLLER SEAT	2
9	CA30280A	ELECTRICAL BOX	1
10	10170510	SCREW M5*10L	4
11	CA304300	ELECTRICAL COVER	1
15	10140612	SCREW M6*12L	2
16	CA101400	FIXED SEAT	1
17	CA400200	ROLLER	14
18	10750001	PIN	26
19	CA302400	ROLLER(LONG)	7
20	CA302300	ROLLER(SHORT)	16
21	CA33070A	B-PLATE	2
22	CA33060A	A-PLATE	2
23	10100812	SCREW M8*12L & S.W & W	8

# Tape Cartridge



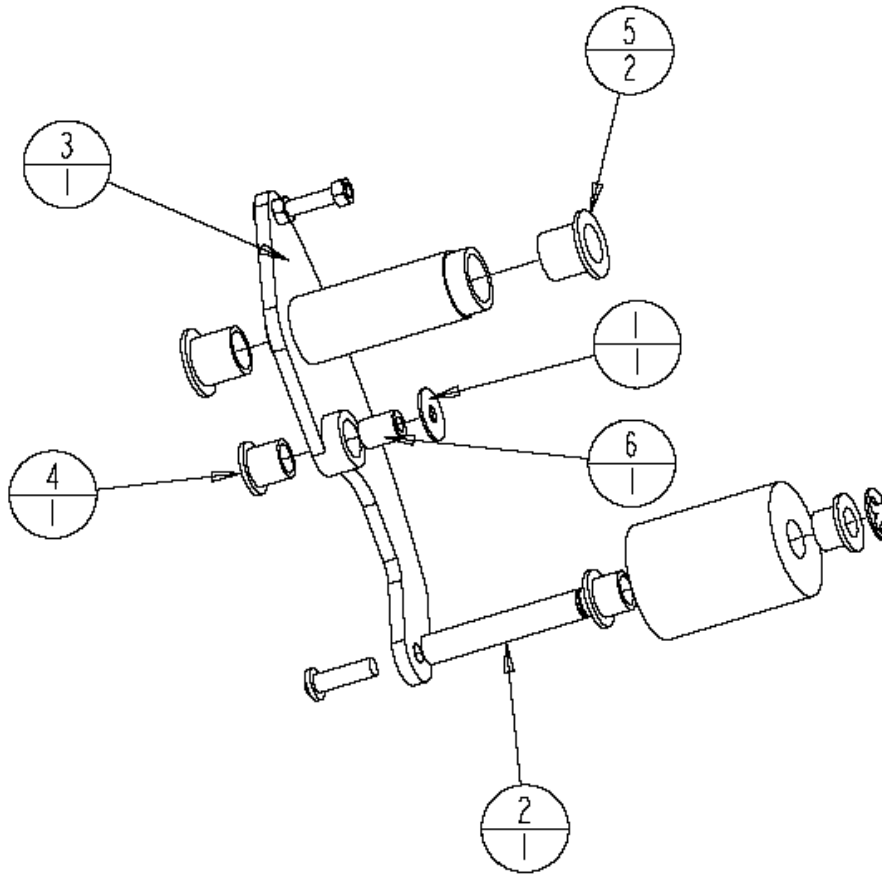
1	2	5000091	ASSY-2" WIPE ROLLER	C22-21-015
2	1	5000085	SPRING ADJUSTER, MAIN	C22-20-065
3	1	5000082	ASSY-SPACER, BASE PLATE	C22-20-083
4	1	5000097	FAB-CONNECTING LINK	C22-21-061
5	1	5000837	ASSY-2" CLUTCH ROLLER	CRA-15
6	1	5000141	ASSY-IDLER ROLLER 2" CARTRIDGE	IR-2AS
7	1	5000824	SPRING MAIN	PI2
8	1	5000822	SPRING KNIFE ARM	PI3
9	1	5000688	ASSY-TAPE CORE, 2" C22	TC201
10	1	5000019	ASSY-FRONT ARM 2" CARTRIDGE	
11	1	5001209	ASSY-REAR ARM, 2" CARTRIDGE	
12	1	5001210	ASSY-KNIFE ARM STOP	
13	1	5000107	ASSY-2" KNIFE ARM	KA-2
PART	QTY	MODEL PART NO.	DESCRIPTION	OLD P/N



1	1	5000238	WASHER-FLAT SS #10, 11/16"OD	
2	1	5000094	FAB/WELD-FRONT ARM,WELDMENT 2"	C22-21-052
3	1	5000681	FAB-TAPE GUIDE PLATE	C22-21-053
4	1	5000095	FAB-TAPE HOLD PLATE	C22-21-054
5	1	5000682	FAB-FRONT ARM, TOP (ROLLER)	C22-21-057
6	1	5000680	FAB-SHAFT, ROLLER PIVOT	C22-21-071
7	3	5000100	MACH-TAPE PLATE PIVOT SHAFT	C22-21-072
8	1	5000101	FAB-GUIDE ROLLER, CENTER	C22-21-073
9	2	5000102	FAB-GUIDE ROLLER, SIDE	C22-21-074
10	1	5000868	BUSHING-FLANGED 3/8"ID, 1/2"OD	P1
11	1	5000817	SET SCREW SHAFT COLLAR 3/8" ID	P11
12	1	5000821	SPRING FINGER PLATE	P14
13	1	5000830	TAPE GUIDE SPRING	P15
14	2	5000816	BUSHING-FLANGE 1/2"ID, 5/8"OD	P2
15	1	5000825	BUSHING-PLAIN 3/8"ODX.197"ID	P4
PART	QTY	MODEL PART NO.	DESCRIPTION	OLD P/N

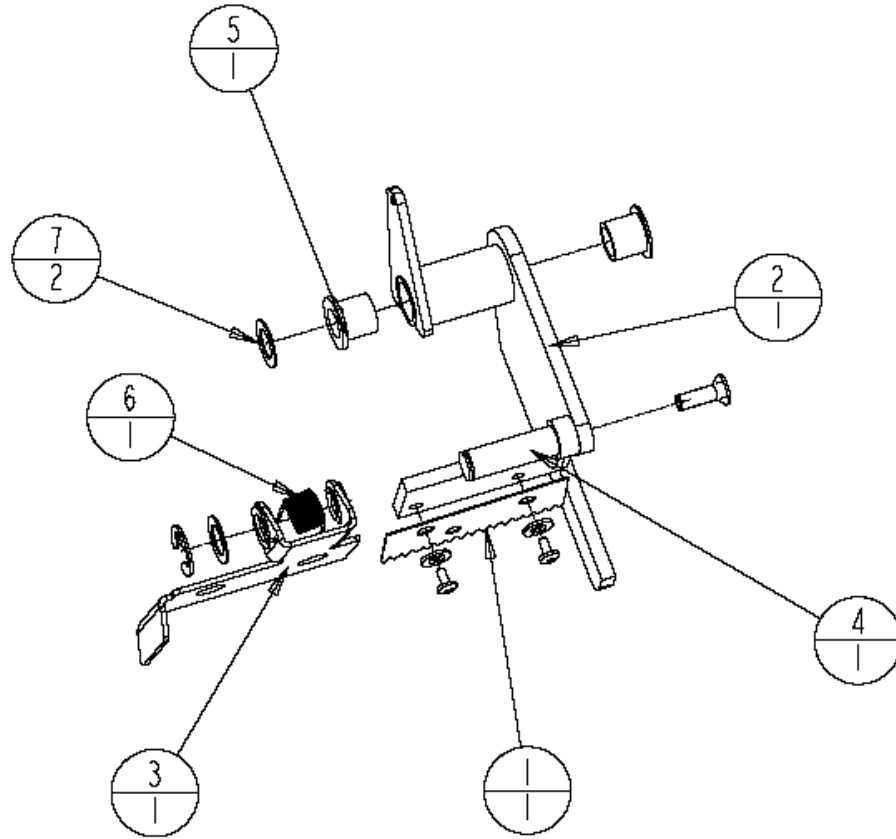


REAR ARM ASSEMBLY  
5001209



1	1	5000238	WASHER-FLAT SS #10, 11/16"OD	
2	1	5000680	FAB-SHAFT, ROLLER PIVOT	C22-21-071
3	1	5000105	REAR ARM, WELDMENT	C22-22-060
4	1	5000868	BUSHING-FLANGED 3/8"ID, 1/2"OD	P1
5	2	5000816	BUSHING-FLANGE 1/2"ID, 5/8"OD	P2
6	1	5000825	BUSHING-PLAIN 3/8"ODX.197"ID	P4
PART	QTY	MODEL PART NO.	DESCRIPTION	OLD P/N

KNIFE ARM ASSEMBLY  
5000107



1	1	5000079	KNIFE BLADE 2"	BL201
2	1	5000841	FAB/WELD-KNIFE ARM (OLD STYLE)	C22-23-067
3	1	5000108	FAB-2" KNIFE GAURD	C22-23-068
4	1	5000112	KNIFE GAURD PIVOT SHAFT 2" / 3"	C22-23-081
5	1	5000868	BUSHING-FLANGED 3/8"ID, 1/2"OD	PI
6	1	5000823	SPRING KNIFE COVER	PI6
7	2	5000334	WASHER-FLAT, 3/8 SUP THN, SS	
PART	QTY	MODEL PART NO.	DESCRIPTION	OLD P/N



# Warranty Statement

## SB-2/3EXN Carton Sealing Machine

### Warranty Statement

Eastey Enterprises warrants that all of the products it ships will be in good working order and free from defects in material and workmanship and will conform to the published specifications for that product.

### Warranty Period

Drive motor(s):	1 year
Gear reducer:	1 year
Tapehead:	1 year (Except for moving parts which are subject to normal wear, tear and replacement which are warranted to be free from defects in material and workmanship.)
All other parts:	1 year (Except for moving parts which are subject to normal wear, tear and replacement which are warranted to be free from defects in material and workmanship.)

### Taping Quality

Taping quality achieved in a given application is dependent on the installation, the material handling, and the maintenance provided. Eastey makes no warranty that the print quality achieved in an application will be the same as that achieved on a test piece in our laboratory.

### Shipping Policy

Customer pays all incoming shipping. If the item is defective and under warranty, Eastey pays return shipping charges for least costly method. If expedited shipping is desired, customer must furnish his shipping account and shipping fees will be charged to that account.

### Warranty Verification

If you conclude that a product may be defective and may be covered by warranty, obtain a Return Material Authorization number and return the defective item to Eastey. Eastey will analyze the product and, if found to be defective, we will, at our option, replace or repair the item. If the item is found to not be eligible for warranty, you will be notified and may decide on disposition. Defective products will be replaced or repaired as promptly as possible.

**Warranty Eligibility**

The warranty provided by Eastey Enterprises. is only to the original buyer.

**Limited Warranty**

THE ABOVE WARRANTY IS EXCLUSIVE AND IN LIEU OF ALL OTHER WARRANTIES, WHETHER EXPRESSED OR IMPLIED, INCLUDING THE IMPLIED WARRANTIES OF MERCHANTABILITY, FITNESS FOR A PARTICULAR PURPOSE AND NONINFRINGEMENT.

**Disclaimer of Damages**

REGARDLESS OF WHETHER ANY REMEDY SET FORTH HEREIN FAILS OF ITS ESSENTIAL PURPOSE, IN NO EVENT WILL EASTEY ENTERPRISES, INC. BE LIABLE FOR ANY SPECIAL, CONSEQUENTIAL, INDIRECT OR SIMILAR DAMAGES, INCLUDING LOST PROFIT OR LOST OPPORTUNITIES OF ANY TYPE ARISING OUT OF THE USE OR INABILITY TO USE THESE PRODUCTS EVEN IF EASTEY ENTERPRISES, INC. HAS BEEN ADVISED OF THE POSSIBILITY OF SUCH DAMAGES.



# Customer Support

## **Eastey Technical Service**

For help setting up or operating the SB-2/3EXN Case Taper, please contact Eastey Technical Service at one of the numbers listed below.

Toll-Free Phone	800-877-5658
Phone	763-795-8856
Fax	763-795-8867
E-mail	<a href="mailto:info@eastey.com">info@eastey.com</a>
Web	<a href="http://www.eastey.com">www.eastey.com</a>

Thanks again for your purchase of Eastey products. We are pleased to be a part of your packaging needs.







***EASTEY***®