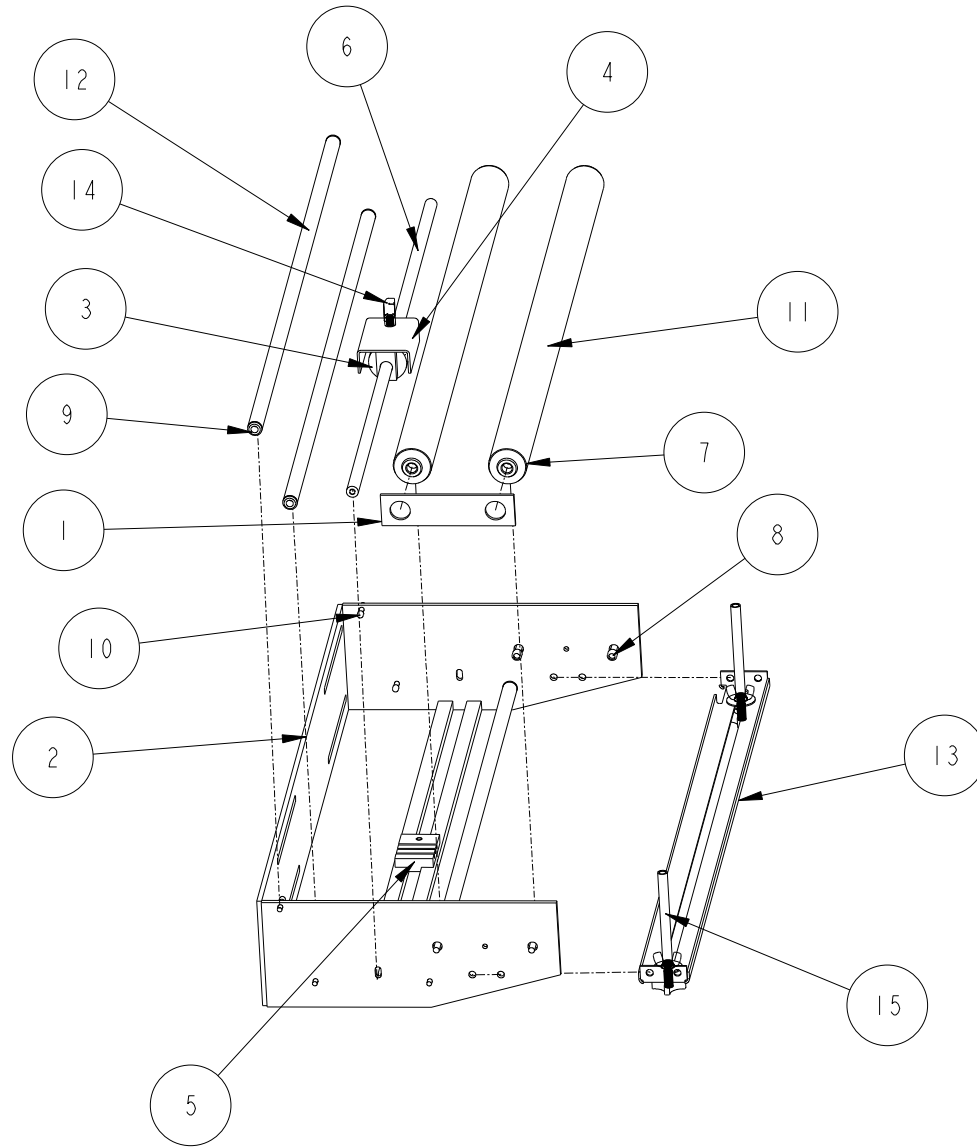


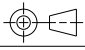
COMPONENT NO.	QTY	ITEM	DESCRIPTION
EAST0240	1	1	MACH-FILM BRAKE 7" BRKT
EAST0266	1	2	FILM RACK COMPLETE
EAST0366	1	3	MACH-PIN PERF WHEEL
EAST0367	1	4	W/F-PIN PERF GUARD ASSY
EAST0368	1	5	MACH-PIN PERF LOWER PAD
EAST0369	1	6	PIN PERF SHAFT
EAST0378	4	7	BEARING FILM RACK LARGE ROLLER
EAST0379	4	8	MACH-FILM RACK ROLLER BOLTS LRG
EAST0380	6	9	BEARING FILM RACK ROLLER SMALL
EAST0381	6	10	FILM RACK ROLLER BOLT SM
EAST0382	2	11	FILM RACK ROLLER LARGE
EAST0383	3	12	FILM RACK ROLLER SMALL
EAST0455	1	13	FILM RACK SLIDE PLATE
ETC00210	1	14	KNOB ELECTRICAL PANEL
SUBA0123	2	15	ASSY-FILM GUIDE BOLT
XH256	1	16	SCREW THUMB 5/16-18 X 1.25

<b>ENGAGE</b> <i>Advanced Systems Corporation</i> <small>3000 S. 10th St. Suite 100  7041 South Ave. N.  Fremont, CA 94538-4428  (415) 871-7500</small>			
<b>FILM RACK</b> <b>20" WIDE</b>		<small>Sheet 2 of 2</small>	
<b>SIZE</b> A	<b>MODEL NUMBER</b> SUBA0033	<b>DRAWING NUMBER</b> SUBA0032	<b>REV</b> 1
<b>SCALE</b> 0.1001	<b>SHEET 2 OF 2</b>		

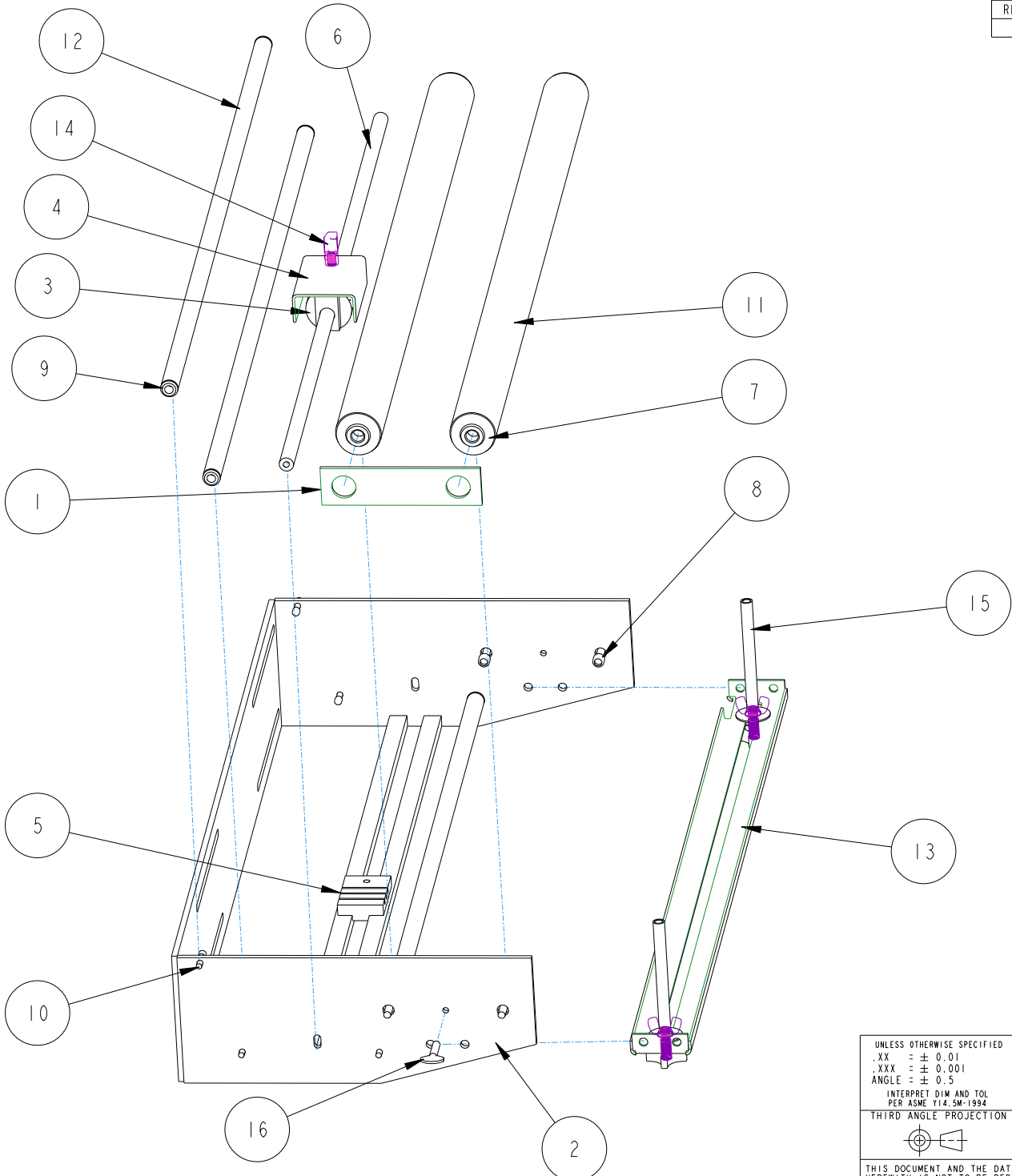
COMPONENT NO.	QTY	ITEM	DESCRIPTION
EAST0240	1	1	MACH-FILM BRAKE 7" BRKT
EAST0303	1	2	FILM RACK COMPLETE "WIDE"
EAST0366	1	3	MACH-PIN PERF WHEEL
EAST0367	1	4	W/F-PIN PERF GUARD ASSY
EAST0368	1	5	MACH-PIN PERF LOWER PAD
EAST0370	1	6	PIN PERF SHAFT 30X40 RACK
EAST0378	4	7	BEARING FILM RACK LARGE ROLLER
EAST0379	4	8	MACH-FILM RACK ROLLER BOLTS LRG
EAST0380	6	9	BEARING FILM RACK ROLLER SMALL
EAST0381	6	10	FILM RACK ROLLER BOLT SM
EAST0413	2	11	FILM RACK ROLLER LARGE WIDE
EAST0414	3	12	FILM RACK ROLLER SMALL
EAST0473	1	13	FILM RACK SLIDE PLATE WIDE
ETC00210	1	14	KNOB ELECTRICAL PANEL
SUBA0123	2	15	ASSY-FILM GUIDE BOLT

REVISIONS						
REV	ECO #	DESCRIPTION	DRAFT	CHKR	APPR	DATE
1	-/-	INITIAL RELEASE	TMS	TMS	TMS	11-15-13



UNLESS OTHERWISE SPECIFIED -XX = ± 0.01 -XXX = ± 0.001 ANGLE = ± 0.5 INTERPRET DIM AND TOL PER ASME Y14.5M-1994	MATERIAL	SEE BOM N/A	<b>ENGAGE</b> <i>technology corporation</i> Squid Ink Cogent Technologies Hestey Enterprises 7041 Boone Ave. N. Ex-Tek Industries Brooklyn Park, Mn 55428 1-800-777-2628		
	FINISH	N/A -			
THIRD ANGLE PROJECTION	DRAWN BY	TMS   11-15-13	TITLE		
	MODELED BY	TMS   11-15-13	ASSY-FILM RACK 36" W/PIN PERF		
	THIS DOCUMENT AND THE DATA DISCLOSED HEREIN OR HERewith IS NOT TO BE REPRODUCED, USED OR OTHERWISE DISCLOSED IN WHOLE OR IN PART TO ANYONE WITHOUT THE WRITTEN CONSENT OF ENGAGE TECHNOLOGIES.		SIZE	MODEL NUMBER	DRAWING NUMBER
		A	SUBA0033	SUBA0033	1
		SCALE	0.100	SHEET 1 OF 1	

REVISIONS						
REV	ECO #	DESCRIPTION	DRAFT	CHKR	APPR	DATE
1	-/-	INITIAL RELEASE	TMS	TMS	TMS	11-15-13



UNLESS OTHERWISE SPECIFIED .XX = ± 0.01 .XXX = ± 0.001 ANGLE = ± 0.5	MATERIAL SEE BOM N/A	<b>ENGAGE</b> <i>technologies corporation</i>	Squid Ink Cogent Technologies 7041 Boone Ave. N. Brooklyn Park, Mn 55428 1-800-377-3628		Hestey Enterprises Ex-Tek Industries	
INTERPRET DIM AND TOL PER ASME Y14.5M-1994	FINISH N/A -		TITLE ASSY-FILM RACK W/PIN PERF			
THIRD ANGLE PROJECTION 	DRAWN BY TMS   11-15-13	SIZE A	MODEL NUMBER SUBA0033	DRAWING NUMBER SUBA0033	REV 1	
THIS DOCUMENT AND THE DATA DISCLOSED HEREIN OR HEREWITH IS NOT TO BE REPRODUCED, USED OR OTHERWISE DISCLOSED IN WHOLE OR IN PART TO ANYONE WITHOUT THE WRITTEN CONSENT OF ENGAGE TECHNOLOGIES.	MODELED BY TMS   11-15-13	SCALE 0.150	SHEET 1 OF 2			

COMPONENT NO.	QTY	ITEM	DESCRIPTION
EAST0240	1	1	MACH-FILM BRAKE 7" BRKT
EAST0303	1	2	FILM RACK COMPLETE "WIDE"
EAST0366	1	3	MACH-PIN PERF WHEEL
EAST0367	1	4	W/F-PIN PERF GUARD ASSY
EAST0368	1	5	MACH-PIN PERF LOWER PAD
EAST0370	1	6	PIN PERF SHAFT 30X40 RACK
EAST0378	4	7	BEARING FILM RACK LARGE ROLLER
EAST0379	4	8	MACH-FILM RACK ROLLER BOLTS LRG
EAST0380	6	9	BEARING FILM RACK ROLLER SMALL
EAST0381	6	10	FILM RACK ROLLER BOLT SM
EAST0413	2	11	FILM RACK ROLLER LARGE WIDE
EAST0414	3	12	FILM RACK ROLLER SMALL
EAST0473	1	13	FILM RACK SLIDE PLATE WIDE
ETC00210	1	14	KNOB ELECTRICAL PANEL
SUBA0123	2	15	ASSY-FILM GUIDE BOLT
XH256	1	16	SCREW THUMB 5/16-18 X 1.25

<b>ENGAGE</b> <i>Advanced Systems Corporation</i> <small>3000 S. 10th St. Suite 100  7041 South Ave. N.  Fremont, CA 94539-4428  (415) 871-7500</small>			
<b>FILM RACK</b> <b>30" WIDE</b>		<small>Sheet 2 of 2</small>	
<b>SIZE</b> A	<b>MODEL NUMBER</b> SUBA0033	<b>DRAWING NUMBER</b> SUBA0033	<b>REV</b> 1
<b>SCALE</b> 0.1001	<b>SHEET 2 OF 2</b>		