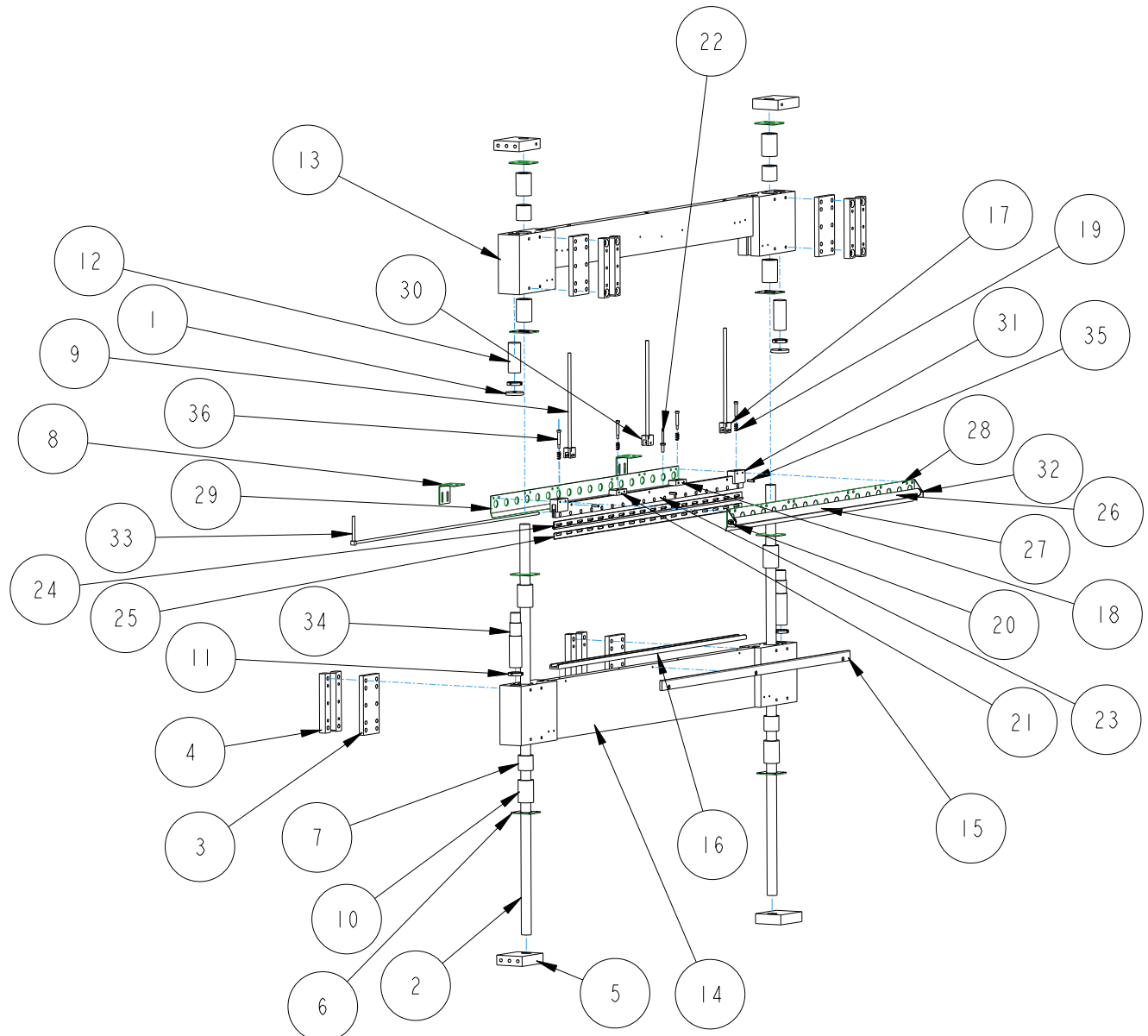


COMPONENT NO.	QTY	ITEM	DESCRIPTION
52000120	2	1	BUSHING POLY/HEAD CUSHION
BM000028	2	2	LINEAR SHAFT
BM000029	4	3	SEAL SYSTEM CHAIN PLATE
BM000030	8	4	SEAL SYSTEM CHAIN SIDE GUIDE
BM000032	4	5	SEAL SYSTEM LINIER SHAFT BLOCK
BM000033	8	6	SEAL SYSTEM BEARING KEEPER
BM000040	4	7	LINEAR BEARING SPACER
BM000057	2	8	FAB-HEAD SAFETY BRACKET
BM000058	3	9	HOT KNIFE THRDED ROD 10"
BM000503	8	10	LINEAR BEARING 1"
BM000510	4	11	NUT JAM/SPANNER
BM000515	2	12	THREADED ROD 1 1/4-12
BM350033	1	13	W/F-UPPER SEAL BAR X-OVER
BM350034	1	14	W/F-LOWER SEAL BAR X-OVER
BM350037	1	15	SEAL HEAD LOWER PAD PLATE
BM350050	1	16	SEAL BAR LOWER 35"
EAST0511	2	17	MACH-HOT KNIFE SADDLE
EAST0514	1	18	MACH-HOT KNIFE SPACER BLK
EAST1007	4	19	SAFETY SHIELD SPRING
EAST1020	2	20	COLLAR 1/4" ZINC PLATED
EP000095	1	21	MACH-HOT KNIFE SPACER BLACK W/HOLE
EP000535	1	22	THERMOCOUPLE HOT KNIFE
ES350051	1	23	HOT KNIFE SEAL BAR
ES350053	1	24	HOT KNIFE MUSHROOM INSERT
ES350054	1	25	HOT KNIFE CUTTING RULE
ES350068	1	26	SEAL HEAD FILM GUIDE SHAFT
ES350070	1	27	MACH-SEAL HEAD FILM GUIDE ROLLER
ES350213	1	28	W/F-HOT KNIFE SAFETY SHIELD FRONT
ES350216	1	29	HOT KNIFE SAFETY SHIELD
ESC00037	1	30	MACH-HOT KNIFE SADDLE CENTER
ESC00131	2	31	HOT KNIFE SLOTTED SPACER BLOCK
ESC00504	2	32	FILM GUIDE BEARING 1/4"
ESC00580	1	33	FIREROD CART 220V 35" LONG
ESC00623	2	34	DAMPER SHOCK ABSORBER
XH348	3	35	SPLIT PIN 3/16
XH360	4	36	BOLT SHOULDER 1/4 x 1 1/4

REVISIONS						
REV	ECO #	DESCRIPTION	DRAFT	CHKR	APPR	DATE
1	-/-	INITIAL RELEASE	TMS	TMS	TMS	10-27-14



UNLESS OTHERWISE SPECIFIED .XX = ± 0.01 .XXX = ± 0.001 ANGLE = ± 0.5 INTERPRET DIM AND TOL PER ASME Y14.5M-1994	MATERIAL SEE BOM	<b>ENGAGE</b> <i>technologies corporation</i> Squid Ink Cogent Technologies Hestey Enterprises Ez-Tek Industries 7041 Boone Ave. N. Brooklyn Park, Mn 55428 1-800-877-5288
	FINISH N/A	
THIRD ANGLE PROJECTION 	DRAWN BY TMS   10-27-14 MODELED BY TMS   10-27-14	TITLE SEAL HEAD EB35A
THIS DOCUMENT AND THE DATA DISCLOSED HEREIN OR HEREWITH IS NOT TO BE REPRODUCED, USED OR OTHERWISE DISCLOSED IN WHOLE OR IN PART TO ANYONE WITHOUT THE WRITTEN CONSENT OF ENGAGE TECHNOLOGIES.	SIZE A SCALE 0.060	MODEL NUMBER SUBA3550 DRAWING NUMBER SUBA3550 REV 1