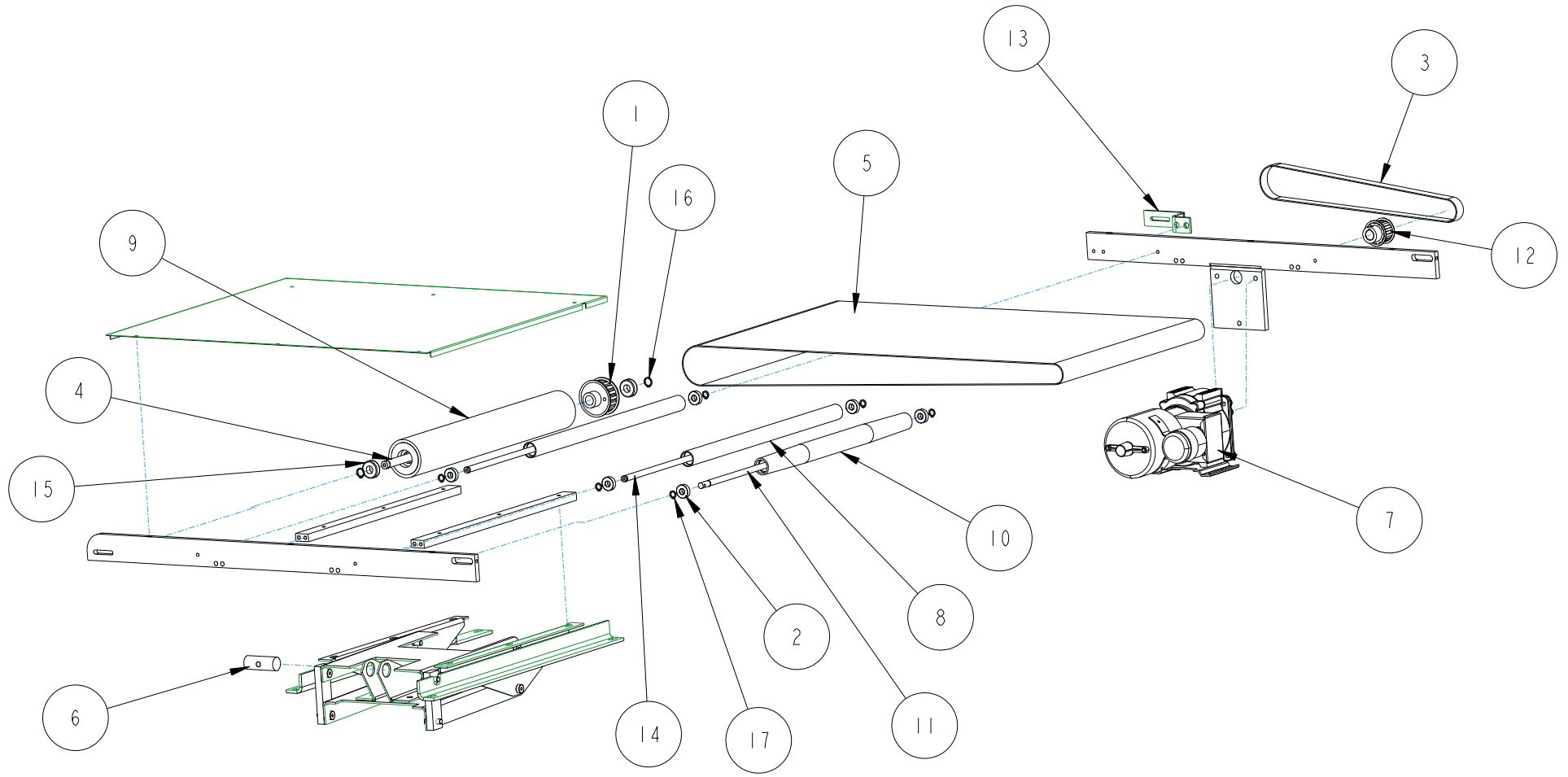
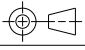
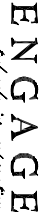


REVISIONS						
REV	ECO #	DESCRIPTION	DRAFT	CHKR	APPR	DATE
1	-/-	INITIAL RELEASE	TMS	TMS	TMS	12/22/14

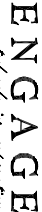


UNLESS OTHERWISE SPECIFIED .XX = ± 0.01 .XXX = ± 0.001 ANGLE = ± 0.5 INTERPRET DIM AND TOL PER ASME Y14.5M-1994 THIRD ANGLE PROJECTION 	MATERIAL SEE BOM -	ENGAGE <i>technologies corporation</i> Squid Ink Cogent Technologies Essey Enterprises 7041 Boone Ave. N. Brooklyn Park, Mn 55428 1-800-377-3628		
	FINISH N/A -			TITLE CONVEYOR TAKEAWAY 20" WIDE
DRAWN BY TMS 12/22/14 MODELED BY TMS 12/22/14	SIZE A	MODEL NUMBER SUBA0036A	DRAWING NUMBER SUBA0036A	REV 1
THIS DOCUMENT AND THE DATA DISCLOSED HEREIN OR HERewith IS NOT TO BE REPRODUCED, USED OR OTHERWISE DISCLOSED IN WHOLE OR IN PART TO ANYONE WITHOUT THE WRITTEN CONSENT OF ENGAGE TECHNOLOGIES.	SCALE 0.100	SHEET 1 OF 2		

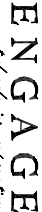
COMPONENT NO.	QTY	ITEM	DESCRIPTION
EAST0051	1	1	DRIVE ROLLER SPROCKET
EAST0052	6	2	BEARING FOR GUIDE ROLLERS
EAST0055	1	3	TIMING BELT EM28 & EM40
EAST0056	1	4	CONV. DRIVE ROLLER SHAFT 20
EAST0058B	1	5	CONVEYOR BELT BLACK EM28
EAST0061	1	6	MACH-BARREL NUT, TAKE AWAY
EAST0063	1	7	MOTOR CONVEYOR SEALERS
EAST0065	2	8	MACH-CONVEYOR GUIDE ROLLER 20
EAST0187	1	9	CONV. DRIVE ROLLER 30
EAST0188	1	10	MACH-CONV. IDLER ROLLER 20
EAST0194	1	11	MACH-CONV. IDLER ROLLER SHAFT 20
EAST0199	1	12	SPROCKET BANDO/STEEL TIMING
EAST0214	1	13	FAB-CONVEYOR ADJ. BRACKET
EAST0243	2	14	MACH-CONV. GUIDE ROLLER SHAFT 20
EAST0254	2	15	BEARING FOR DRIVE ROLLER
EAST1013	2	16	SNAP RING 1/2"
EAST1014	6	17	SNAP RING 3/8"

			
<i>conveyors systems</i>			
CONVEYOR TAKEAWAY EM2028		<small> Speed 125 Capacity 10000 lbs 7041 30000 Ave. N. 2002172 P.O. Box 18232428 55425/2000 </small>	
SIZE A	MODEL NUMBER SUBA0036A	DRAWING NUMBER SUBA0036A	REV 1
SCALE 0.1001	SHEET 2 OF 2		

COMPONENT NO.	QTY	ITEM	DESCRIPTION
EAST0051	1	1	DRIVE ROLLER SPROCKET
EAST0052	8	2	BEARING FOR GUIDE ROLLERS
EAST0055	1	3	TIMING BELT EM28 & EM40
EAST0056	1	4	CONV. DRIVE ROLLER SHAFT 20
EAST0059	1	5	CONVEYOR BELT BLACK EM40
EAST0061	2	6	MACH-BARREL NUT, TAKE AWAY
EAST0063	1	7	MOTOR CONVEYOR SEALERS
EAST0065	3	8	MACH-CONVEYOR GUIDE ROLLER 20
EAST0187	1	9	CONV. DRIVE ROLLER 30
EAST0188	1	10	MACH-CONV. IDLER ROLLER 20
EAST0194	1	11	MACH-CONV. IDLER ROLLER SHAFT 20
EAST0199	1	12	SPROCKET BANDO/STEEL TIMING
EAST0214	1	13	FAB-CONVEYOR ADJ. BRACKET
EAST0243	3	14	MACH-CONV. GUIDE ROLLER SHAFT 20
EAST0254	2	15	BEARING FOR DRIVE ROLLER
EAST1013	2	16	SNAP RING 1/2"
EAST1014	8	17	SNAP RING 3/8"

			
<i>conveyors systems</i>			
Title CONVEYOR TAKEAWAY EM2040		Sheet Size 7641 3000 474 N 8200172 8215 8233428 2000/1/2000	
Size A	Model Number SUBA0036A	Drawing Number SUBA0036B	Rev 1
Scale 0.1001	SHEET 2 OF 2		

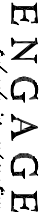
COMPONENT NO.	QTY	ITEM	DESCRIPTION
EAST0051	1	1	DRIVE ROLLER SPROCKET
EAST0052	10	2	BEARING FOR GUIDE ROLLERS
EAST0055	1	3	TIMING BELT EM28 & EM40
EAST0056	1	4	CONV. DRIVE ROLLER SHAFT 20
EAST0359	1	5	CONVEYOR BELT BLACK EM20X50
EAST0061	2	6	MACH-BARREL NUT, TAKE AWAY
EAST0484	1	7	MOTOR CONVEYOR 97 RPM
EAST0065	4	8	MACH-CONVEYOR GUIDE ROLLER 20
EAST0187	1	9	CONV. DRIVE ROLLER 30
EAST0188	1	10	MACH-CONV. IDLER ROLLER 20
EAST0194	1	11	MACH-CONV. IDLER ROLLER SHAFT 20
EAST0199	1	12	SPROCKET BANDO/STEEL TIMING
EAST0214	1	13	FAB-CONVEYOR ADJ. BRACKET
EAST0243	4	14	MACH-CONV. GUIDE ROLLER SHAFT 20
EAST0254	2	15	BEARING FOR DRIVE ROLLER
EAST1013	2	16	SNAP RING 1/2"
EAST1014	10	17	SNAP RING 3/8"

			
<i>Automotive components</i>			
CONVEYOR TAKEAWAY		EM2050	
SIZE A	MODEL NUMBER SUBA0036A	DRAWING NUMBER SUBA1062	REV
SCALE 0.1001 SHEET 2 OF 2			

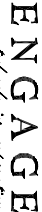
COMPONENT NO.	QTY	ITEM	DESCRIPTION
EAST0051	1	1	DRIVE ROLLER SPROCKET
EAST0052	12	2	BEARING FOR GUIDE ROLLERS
EAST0055	1	3	TIMING BELT EM28 & EM40
EAST0056	1	4	CONV. DRIVE ROLLER SHAFT 20
EAST0527	1	5	CONVEYOR BELT BLACK EM20X70
EAST0061	2	6	MACH-BARREL NUT, TAKE AWAY
EAST0484	1	7	MOTOR CONVEYOR 97 RPM
EAST0065	5	8	MACH-CONVEYOR GUIDE ROLLER 20
EAST0187	1	9	CONV. DRIVE ROLLER 30
EAST0188	1	10	MACH-CONV. IDLER ROLLER 20
EAST0194	1	11	MACH-CONV. IDLER ROLLER SHAFT 20
EAST0199	1	12	SPROCKET BANDO/STEEL TIMING
EAST0214	1	13	FAB-CONVEYOR ADJ. BRACKET
EAST0243	5	14	MACH-CONV. GUIDE ROLLER SHAFT 20
EAST0254	2	15	BEARING FOR DRIVE ROLLER
EAST1013	2	16	SNAP RING 1/2"
EAST1014	12	17	SNAP RING 3/8"

<p>ENGAGE <i>conveyors systems</i> Conveyors 7041 Board Ave. N. 20017 763-33428</p>			
<p>CONVEYOR TAKEAWAY EM2070</p>			
SIZE	MODEL NUMBER	DRAWING NUMBER	REV
A	SUBA0036A	SUBA1002	1
SCALE	0.1001	SHEET 2 OF 2	

COMPONENT NO.	QTY	ITEM	DESCRIPTION
EAST0051	1	1	DRIVE ROLLER SPROCKET
EAST0052	14	2	BEARING FOR GUIDE ROLLERS
EAST0055	1	3	TIMING BELT EM28 & EM40
EAST0056	1	4	CONV. DRIVE ROLLER SHAFT 20
EAST0601	1	5	CONVEYOR BELT BLACK EM20X80
EAST0061	2	6	MACH-BARREL NUT, TAKE AWAY
EAST0484	1	7	MOTOR CONVEYOR 97 RPM
EAST0065	6	8	MACH-CONVEYOR GUIDE ROLLER 20
EAST0187	1	9	CONV. DRIVE ROLLER 30
EAST0188	1	10	MACH-CONV. IDLER ROLLER 20
EAST0194	1	11	MACH-CONV. IDLER ROLLER SHAFT 20
EAST0199	1	12	SPROCKET BANDO/STEEL TIMING
EAST0214	1	13	FAB-CONVEYOR ADJ. BRACKET
EAST0243	6	14	MACH-CONV. GUIDE ROLLER SHAFT 20
EAST0254	2	15	BEARING FOR DRIVE ROLLER
EAST1013	2	16	SNAP RING 1/2"
EAST1014	14	17	SNAP RING 3/8"

			
<i>conveyors systems</i>			
CONVEYOR TAKEAWAY EM2080		<small> Speed 125 Output 10000000 7041 30000 Ave. N. 2002172 P.O. Box 18232428 55007/5000 </small>	
SIZE A	MODEL NUMBER SUBA0036A	DRAWING NUMBER SUBA1032	REV
SCALE 0.1001	SHEET 2 OF 2		

COMPONENT NO.	QTY	ITEM	DESCRIPTION
EAST0051	1	1	DRIVE ROLLER SPROCKET
EAST0052	20	2	BEARING FOR GUIDE ROLLERS
EAST0055	1	3	TIMING BELT EM28 & EM40
EAST0056	1	4	CONV. DRIVE ROLLER SHAFT 20
EAST1107	1	5	CONVEYOR BELT BLACK EM20X100
EAST0061	2	6	MACH-BARREL NUT, TAKE AWAY
ETC00185	1	7	MOTOR CONVEYOR 1/8 HP
EAST0065	9	8	MACH-CONVEYOR GUIDE ROLLER 20
EAST0187	1	9	CONV. DRIVE ROLLER 30
EAST0188	1	10	MACH-CONV. IDLER ROLLER 20
EAST0194	1	11	MACH-CONV. IDLER ROLLER SHAFT 20
EAST0199	1	12	SPROCKET BANDO/STEEL TIMING
EAST0214	1	13	FAB-CONVEYOR ADJ. BRACKET
EAST0243	9	14	MACH-CONV. GUIDE ROLLER SHAFT 20
EAST0254	2	15	BEARING FOR DRIVE ROLLER
EAST1013	2	16	SNAP RING 1/2"
EAST1014	20	17	SNAP RING 3/8"

			
<i>conveyors systems</i>			
CONVEYOR TAKEAWAY EM20100		<small> Speed 1/25 Capacity 10000 lbs 7041 30000 Ave. N. 2002172 P.O. Box 18232428 55407/5500 </small>	
SIZE A	MODEL NUMBER SUBA0036A	DRAWING NUMBER SUBA0036M	REV 1
SCALE 0.1001	SHEET 2 OF 2		