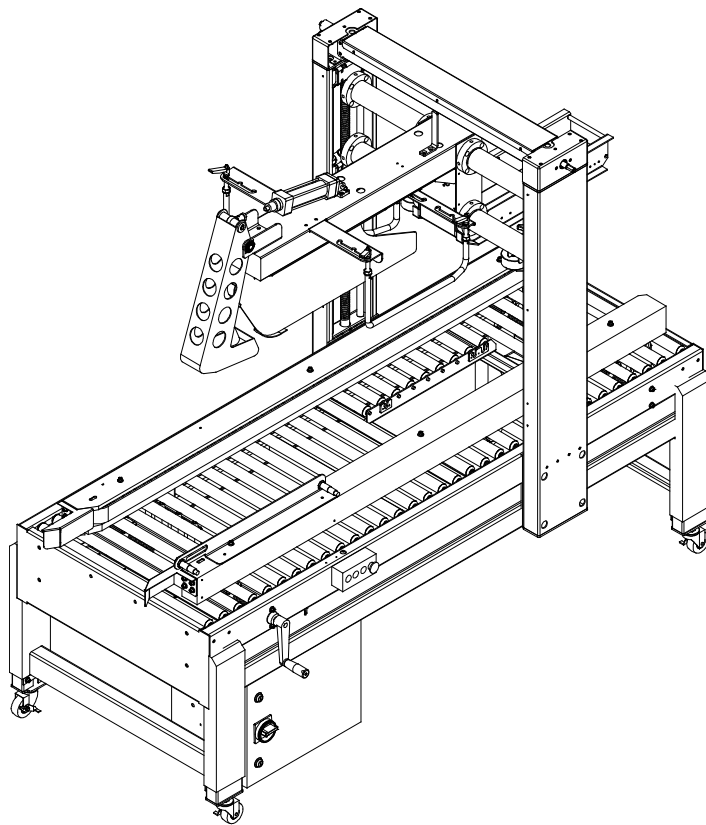


SB-2/3EX-SEMI

Semi Automatic
Carton Sealing Machine

User Guide



EASTEY®

SB-2/3EX-SEMI

Semi Automatic Carton Sealing Machine

User Guide

Revised 11/13/2012

P/N 5001682 Rev C

Copyright and Trademarks

Copyright ©2012 Eastey Enterprises

All rights reserved. All trademarks and brand names
are the property of their respective owners.

Eastey
7041 Boone Ave. N
Brooklyn Park, MN 55428

Phone: (763) 795-8856; Fax (763) 795-8867; 1-800-877-5658
www.eastey.com

Contents:

Safety	7
Introduction	8
General System Description.....	8
Specifications	9
Dimensions	10
Installation	11
Location Requirements	12
Operation	13
Loading the Tape Cartridges.....	13
Power	14
Control Panel	15
Adjustments	16
Air Pressure unit.....	16
Height and Width Adjustment	17
Flap Closing Guide Adjustment	18
Belt Adjustment	20
Maintenance	21
Rollers.....	21
Cutting Knives	21
Changing Knife Blades.....	21
Trouble Shooting.....	24
Parts List.....	25
Electrical.....	25
Pneumatic Parts	28
Side Belt.....	30
Column.....	33
Flap Guide Assembly	35
Machine Body	38
Optional Door	39
Tape Cartridge	41
Appendix A Electrical Schematic.....	45
Warranty Statement	50
Customer Support.....	52

Safety

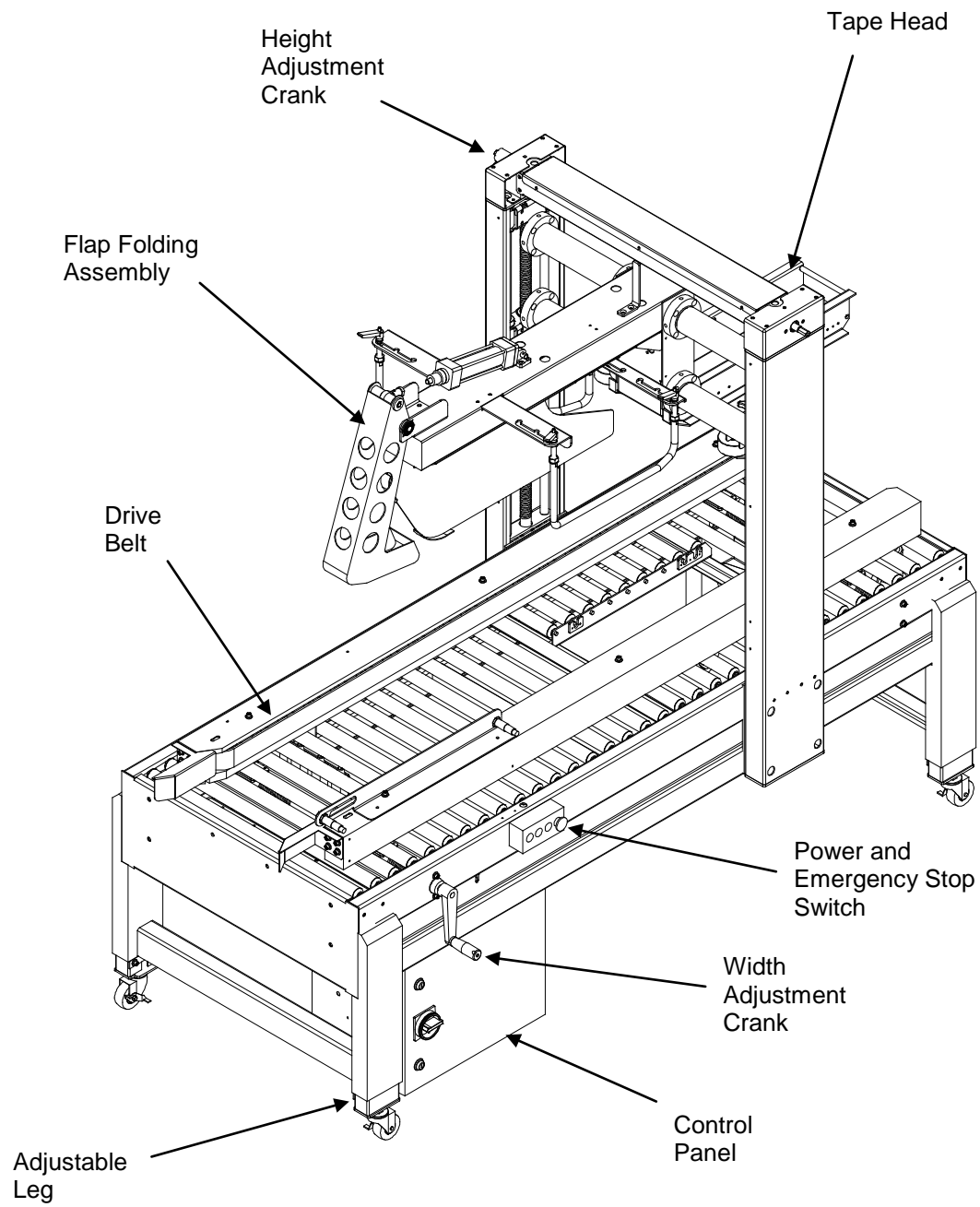
General Safety Precautions

Before installing, operating or servicing this equipment, please read the following precautions carefully:

- This machine is equipped with moving belts. Do not place hands near the rear of this unit when the belts are moving as fingers may be pinched where belts enter the frame. We suggest the use of a roller-type exit conveyor or pack table for your cases. Always remove boxes after they clear the exit end of the machine.
- Observe caution when near the tape applying cartridges or when threading tape. The knife is very sharp, automatically operated and is linked to the wipe down rollers.
- Do not attempt to open or work on the electrical box, junction boxes or other electrical components of the unit without first disconnecting power to the machine. Electrical shock hazard exists if power is not disconnected.
- Do not by-pass any factory-designed safety features such as knife guards, interlocks, switches, etc.
- Do not place hands or body inside the confines of the machine unless the head mechanism is securely fastened, and the electrical supply is shut off.
- Never provide service or clear a box jam when machine is running.
- When feeding a box into the unit, always hold down the box top and present the box to unit. Release hands as soon as the belts begin to take the box.
- Do not wear loose clothing such as ties, scarves, jewelry etc. Long hair should be pulled back and/or covered while operating this machine.

Introduction

General System Description



Specifications

Model	SB-2/3EX-SEMI
Tape	1.5 inches or 2 inches
Belt speed	75ft/min
Capacity	(L) 4.7 to 24 inches (W) 4.3 to 19.5 inches (H) 4.7 to 19 inches~500mm
Consumption	450W
Machine size	(L) 77 inches (W) 35.5 inches (H) 67 inches
Machine net weight	660 lbs.
Air	80 psi

Electrical

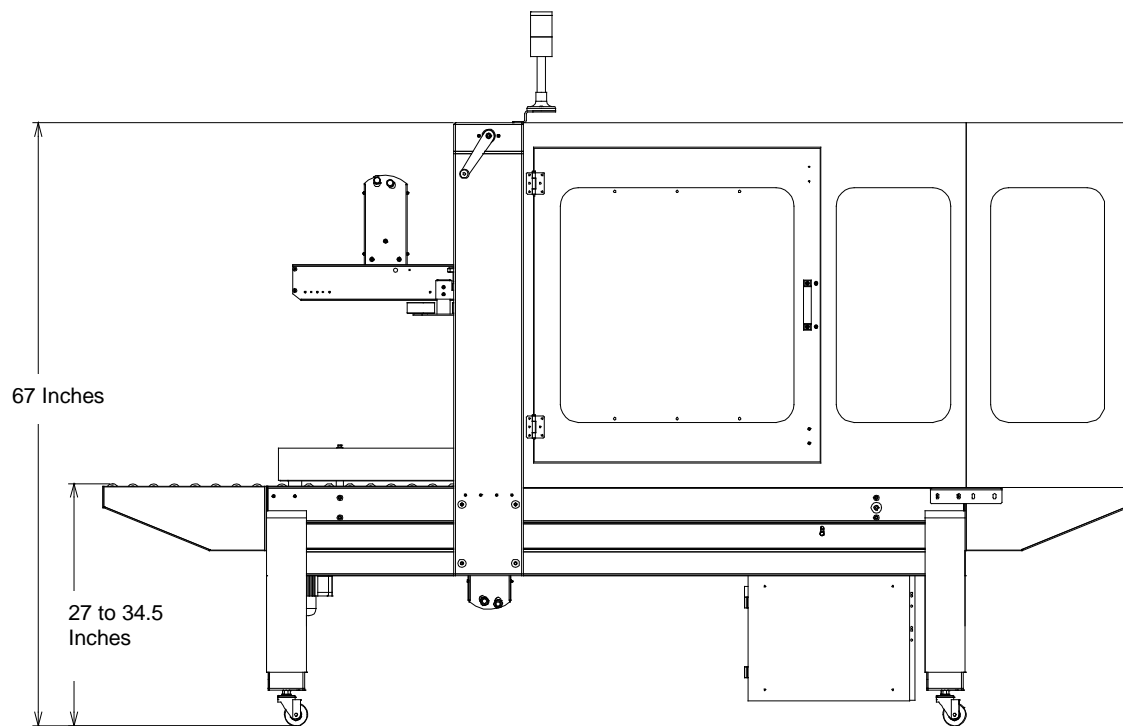
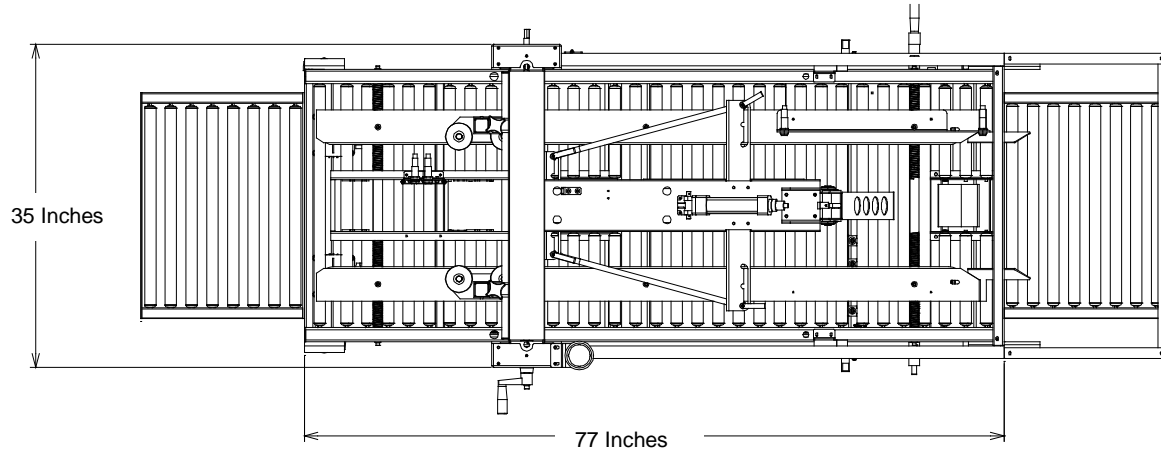
Belt motor	0.18KVA	
Machine power use	0.4KVA	
Power socket need	0.5KVA	

Options

- 3" tape head
- Security door
- Carton entry table
- Carton exit table

Dimensions

Dimensions shown in inches.



Installation

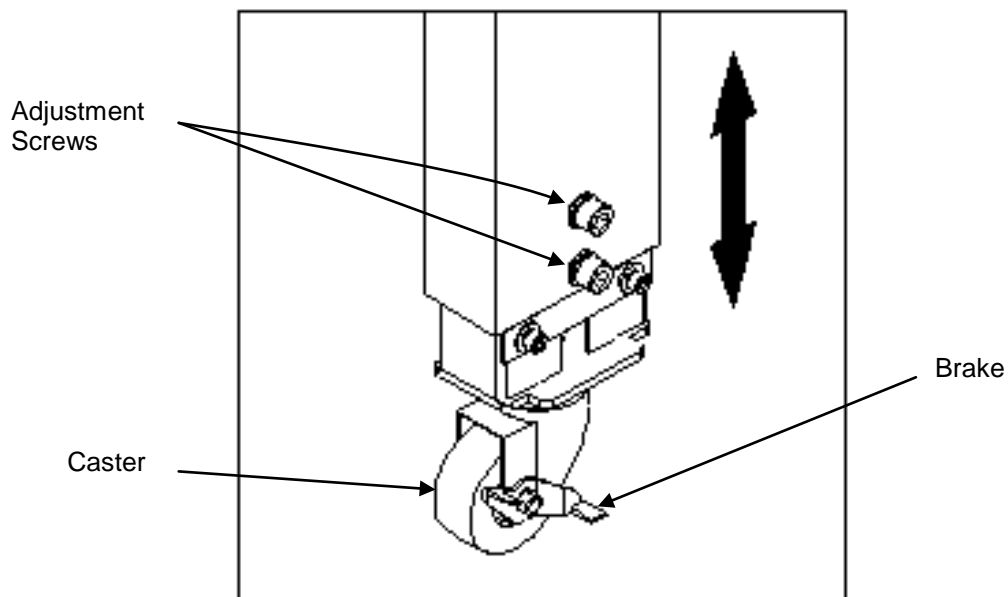
Carefully unpack the outer carton. Avoid damaging the machine body.

Remove the shipping bolts that secure the carton sealer to the shipping pallet. Lift the carton sealer off the pallet.

CAUTION! The SB-2/3EX-SEMI Carton Sealer is a very heavy piece of equipment and will require a forklift or several people to move safely off the shipping pallet.

Install the 4 casters on the carton sealer legs. The casters are very easy to install. Simply thread the castor into the bottom of each leg.

To adjust the leg height, loosen the screws on each leg and slide the insert up or down.



CAUTION! Obviously you will have to raise the Case Taper off the floor to install the casters. Use proper equipment when lifting the case taper. Ensure the SB-2/3EX-Semi Case Taper is secure and will not shift while the casters are being installed.

To move the SB-2/3EX-SEMI to the desired location you will need to use a pallet jack or fork lift. If you have purchased the optional locking casters you can move the taper easily over a smooth flat surface.

Location Requirements

When installing the SB-2/3EX-SEMI Carton Sealer please be aware of the following considerations:

1. The mounting surface is flat and level.
2. Conveyor or packing table height.
3. Alignment with packaging line.

When the SB-2/3EX-SEMI Carton Sealer is positioned in the operating location you will need access to:

1. The power switch.
2. Height and width adjustments.
3. Tape loading (Both upper and lower tape cartridges).
4. Air Hose.

A packing table may be provided at the in feed end where the packer can fill boxes and close the flaps prior to feeding the boxes into the machine. It is also convenient to have a pack table at the exit end of the taper.

It is essential that the table and conveyor be at the machine bed height.

The machine should be placed on a flat, level floor so that it does not rock or move. We recommend that the machine be securely locked in place when used.

Connect the air hose to the filter/regulator assembly on the side of the machine.

Operation

Loading the Tape Cartridges

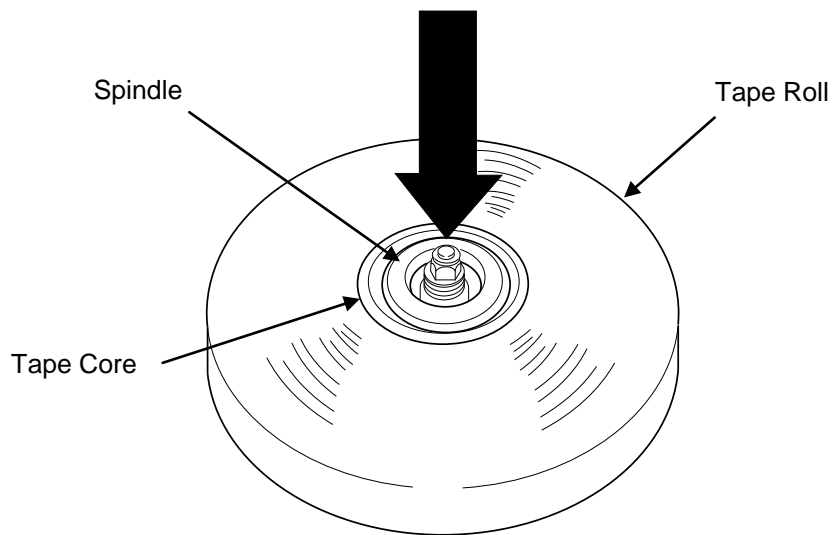
Turn the main power switch to “Off” and disconnect the power.

CAUTION! To avoid personnel injury, remove the tape cartridge before loading tape.

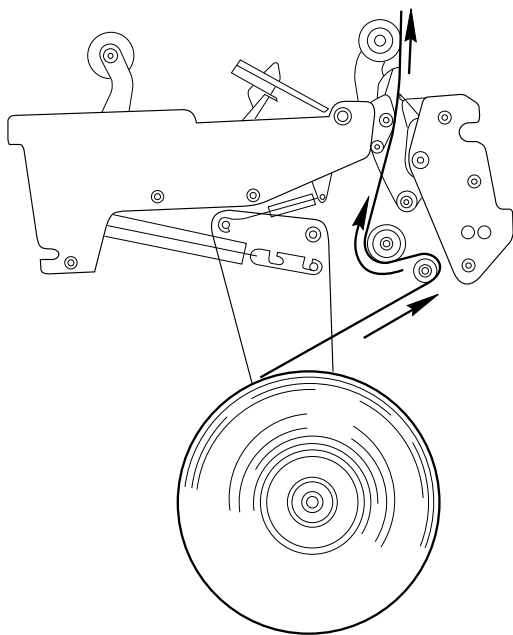
When handling the tape cartridge be careful to avoid contact with the tape cutting blade.

After the taping cartridge has been removed push the tape roll onto the tape core assembly.

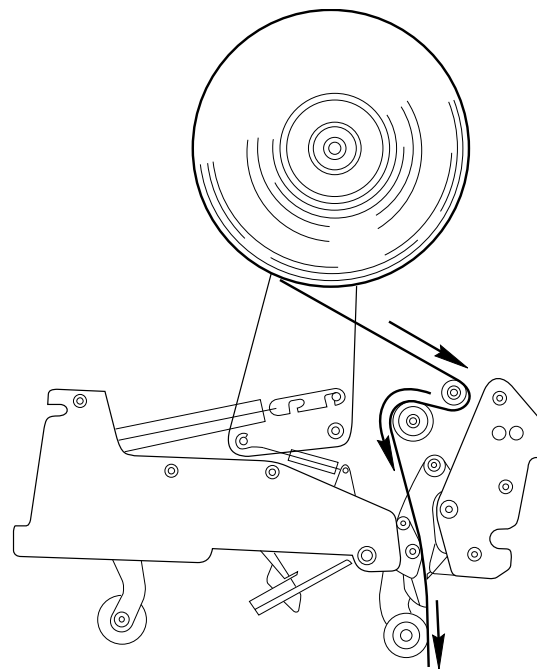
NOTE: Make sure the tape roll is pushed all the way on the tape core assembly.



Carefully thread the new tape according to the following diagram.



Bottom Cartridge



Upper Cartridge

Return the tape cartridge to the operation position.

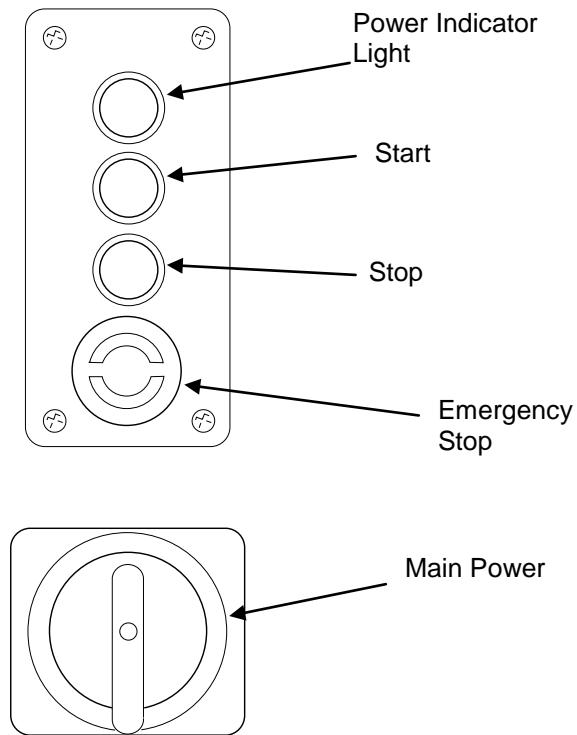
Power

Plug the power supply cord into a properly wired and grounded outlet.

Press start button.

CAUTION! When the power is turned on be aware of moving parts and belts

Control Panel



Power Indicator Light

As the main power switch is “ON” , the power light should be on too. When the light is on, it indicates the machine is powered up and ready to run.

Start

Press the “Start” button to get the automatic or manual program running.

Stop

Press STOP button to stop the machine running.

Emergency Stop Button

Press the button for emergency stop.

Main Power

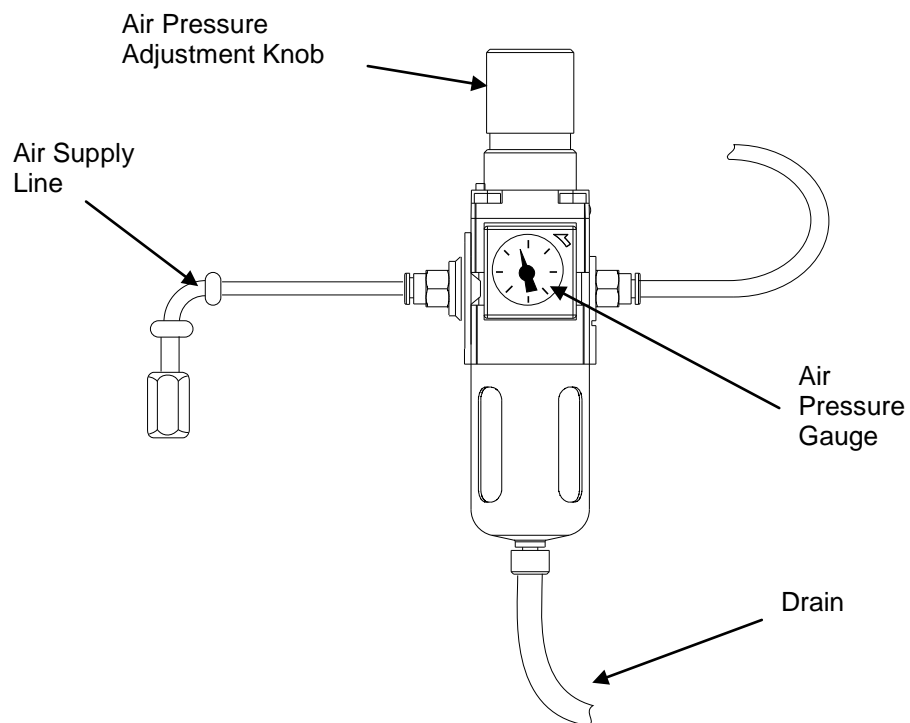
To switch ON and OFF the power.

Adjustments

Air Pressure unit

The air pressure is pre-set at the factory to 80 PSI. The air pressure can be changed up or down for specific requirements. Make air pressure changes are made in small increments.

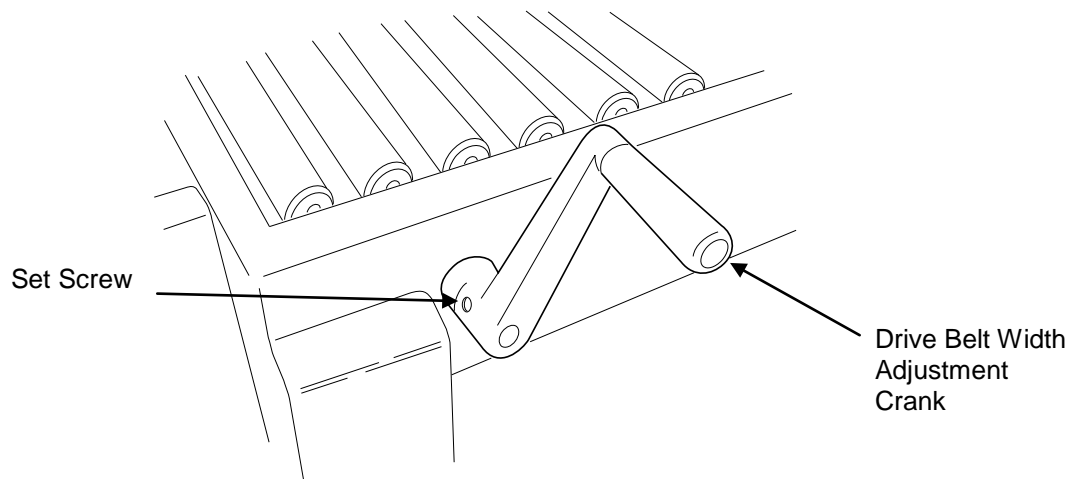
Inspect periodically to make sure the drain system is functional and properly lubricated.



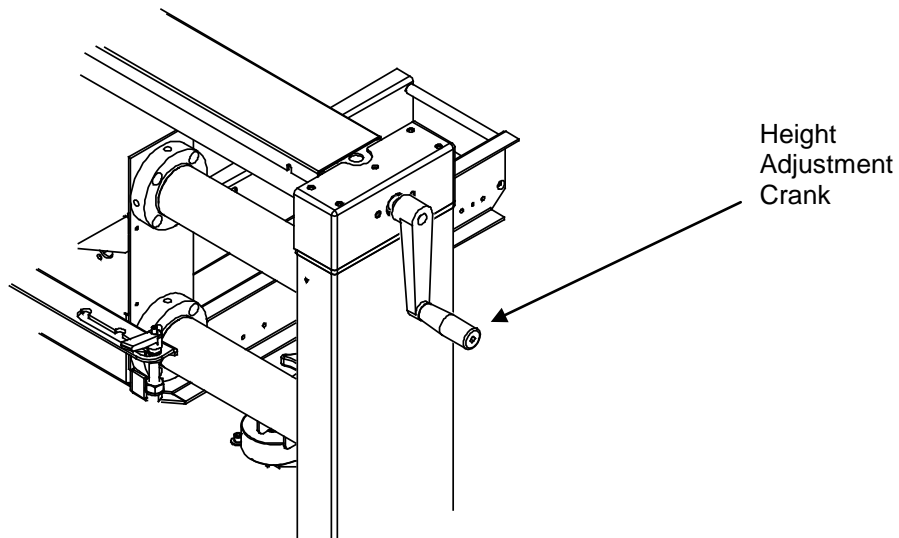
Height and Width Adjustment

With the power off, place an appropriate size carton in the Case Sealer.

Use the drive belt width adjustment crank to set the drive belt width to the correct box width.

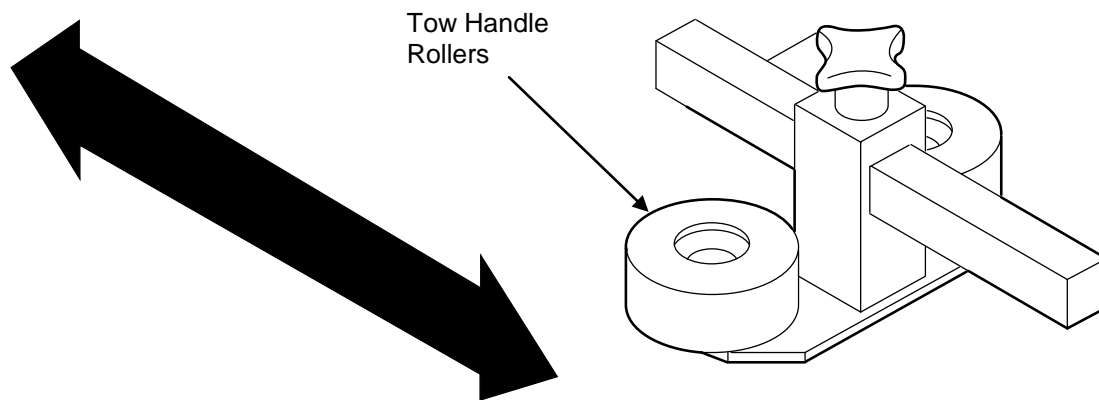


Use the height adjustment crank to set the upper tape head to the correct box height.



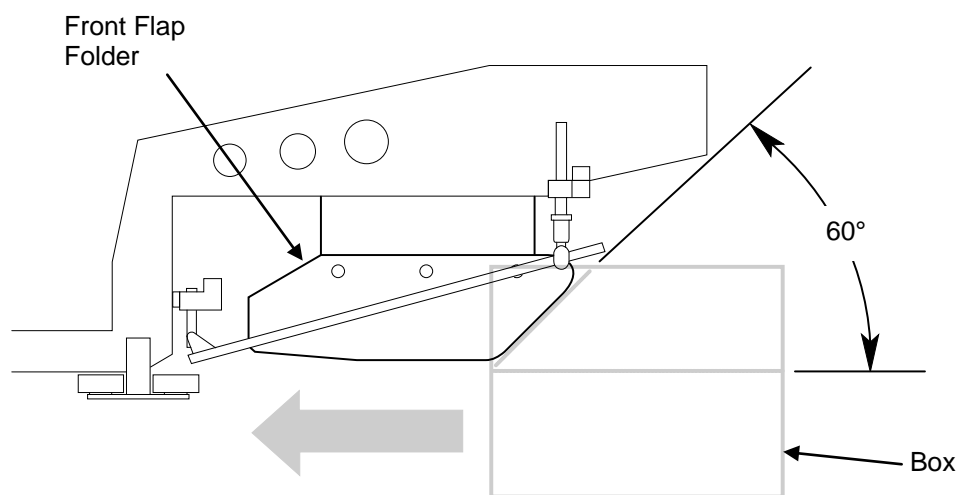
The height and width cranks can be mounted on either side of the machine by loosening the set screw and removing the crank. Mount the crank on the opposite side and re-tighten the set screw.

Loosen the locking knobs on the top squeeze alignment rollers to set the top width to the correct box width and re-tighten the locking knobs. This will insure the box stays centered.



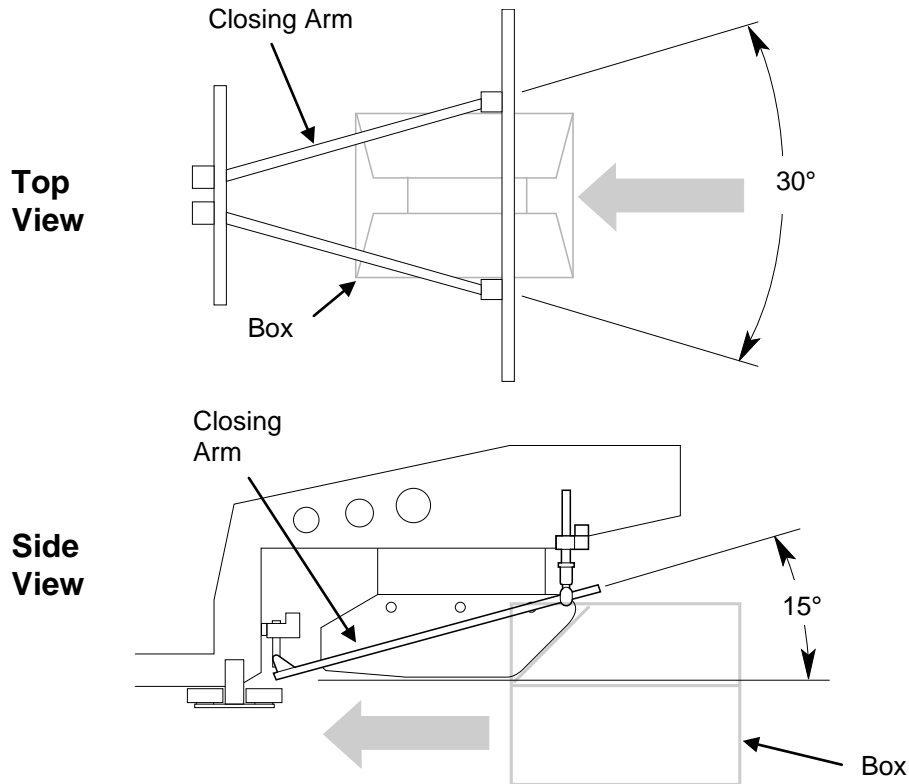
Flap Closing Guide Adjustment

When front cardboard flap touches the front flap folder, the front flap will be folded to 60°.

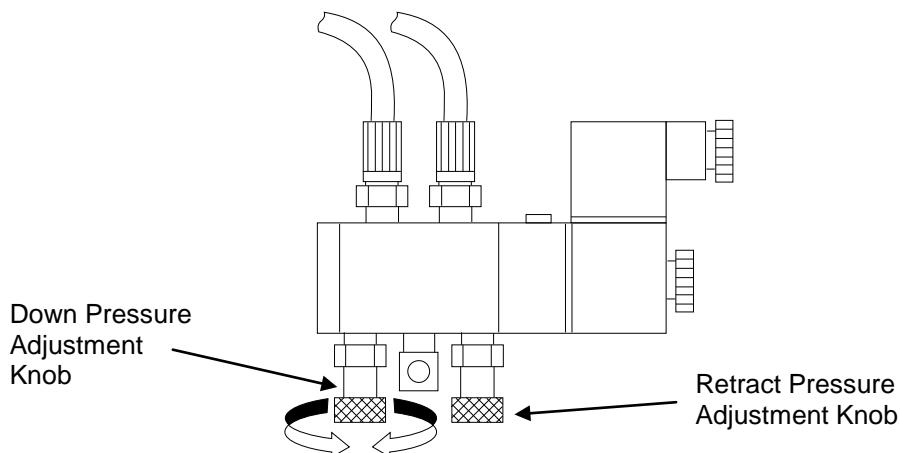


Side View

Side flaps will be closed while carton is moving forward and reaches the 2 closing arms. The most ideal angles for the 2 closing bars are 30 degrees in width. The closing arms are set to an angle of 15 degrees incline (note: The arms are moveable and adjustable in 2 ways both height & width).

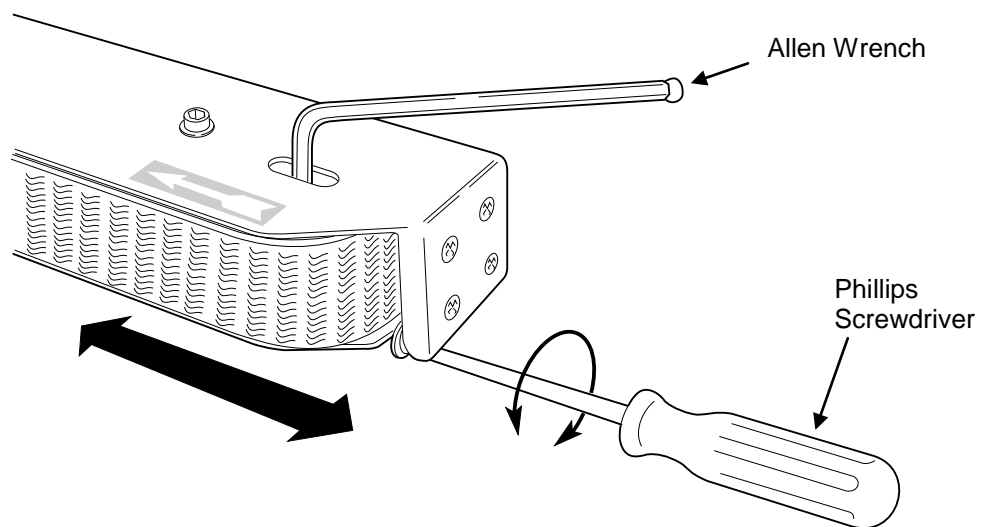


There are two small air valve knobs used to adjust the rear closing flap. One knob will adjust the down speed and the other is for the retraction speed. The rear closing arm pressure is pre-set at the factory. If you need to change the preset pressure, make changes in small increments. Adding too much pressure can cause the arm to go down too fast and too hard.



Belt Adjustment

You do not have to remove the drive belt cover to adjust the drive belt. To adjust the belt, use an allen wrench and loosen the belt nut. Adjust the belt to a suitable tension by turning the adjustment screw with a phillips screwdriver. Re-tighten the belt nut.



Maintenance

The SB-2/3EX-SEMI Industrial Case Taping System will provide many hours of maintenance free operation. There are a few items that may require attention from time to time.

Rollers

Make sure rollers stay clean and grease free. If you should have to clean the rollers simply wipe them down with a clean lint free cloth. If a more thorough cleaning is necessary wipe the rollers down with a mild detergent and water and let dry. **Never use harsh or abrasive cleaners or chemical agents when cleaning the rollers.**

Cutting Knives

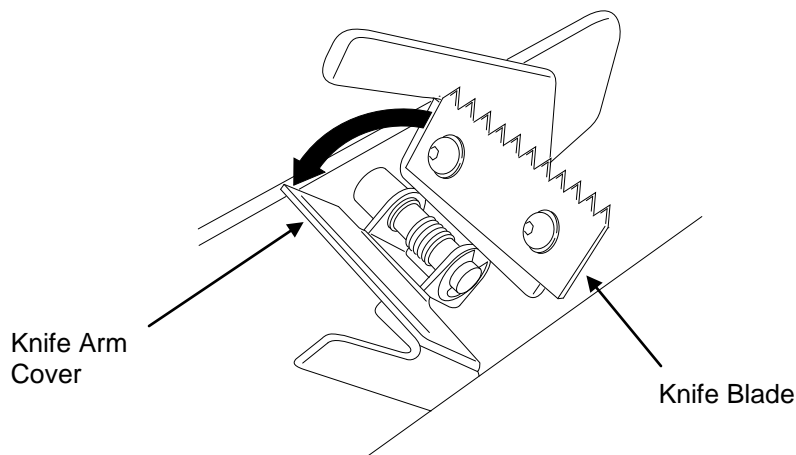
Occasionally inspect the cutting knives to ensure they are clean and free of adhesive residue. Make sure the cutting knife is sharp by inspecting cuts in the tape. Cuts should be straight and neat. If the quality of cuts is eroding, the knife blade is dull and should be replaced.

Changing Knife Blades

CAUTION! Always be aware of the cutting edges while replacing the knife blades. Handle the knife blades carefully.

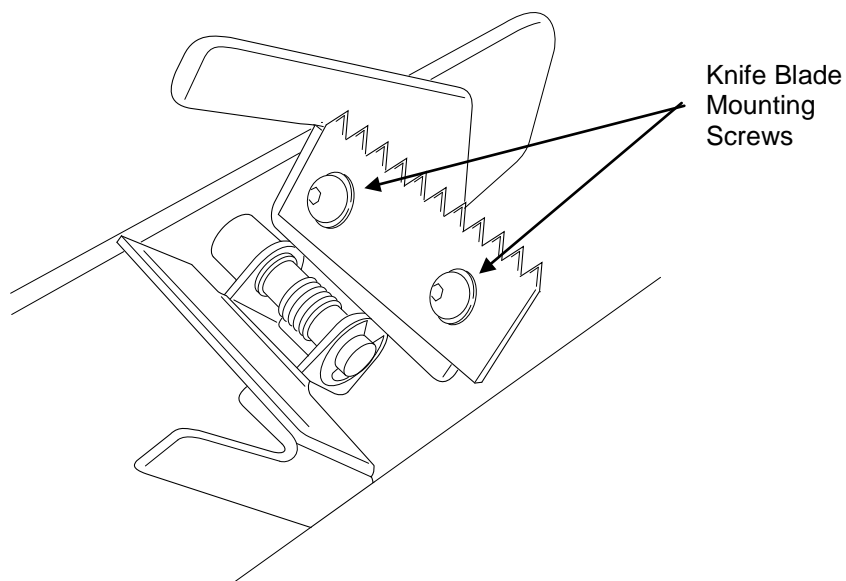
Turn off and unplug the taper.

Open knife arm cover.

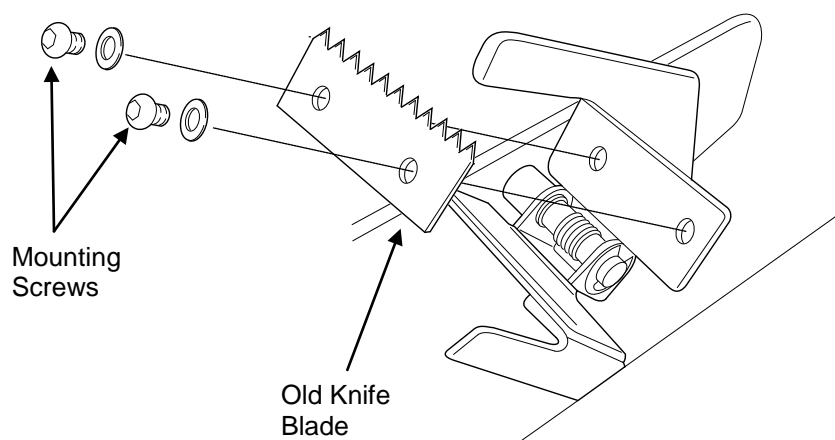


For the upper tape cartridge remove the cartridge from the machine before changing the knife blade. The lower cartridge can remain in the taper while changing the lower knife blade.

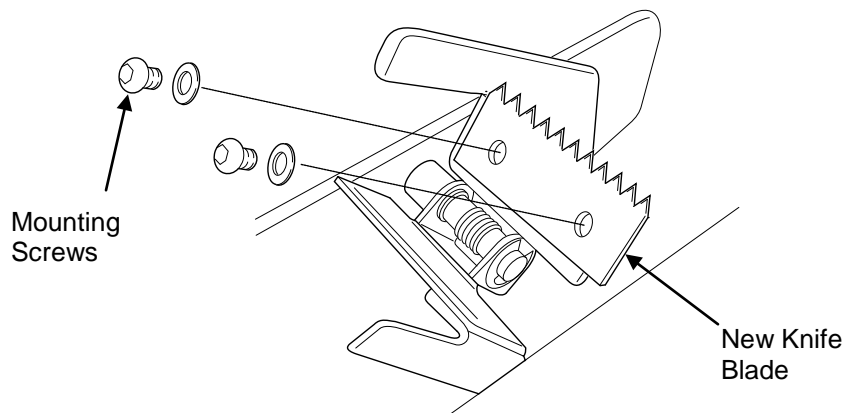
Remove the two knife blade mounting screws.



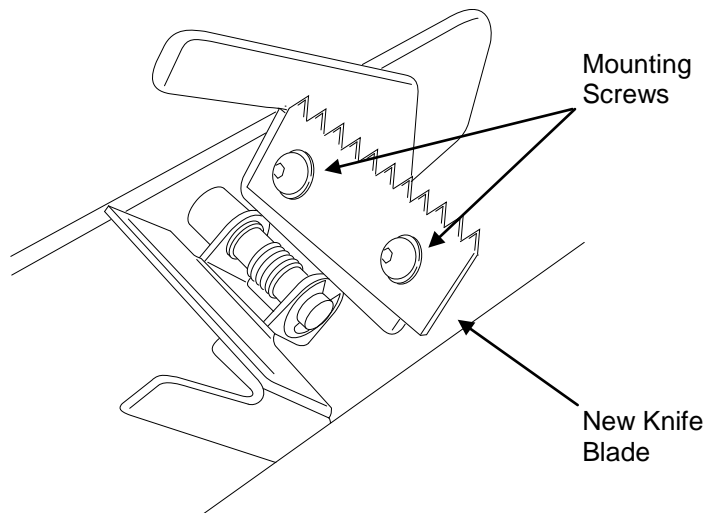
Remove the old blade.



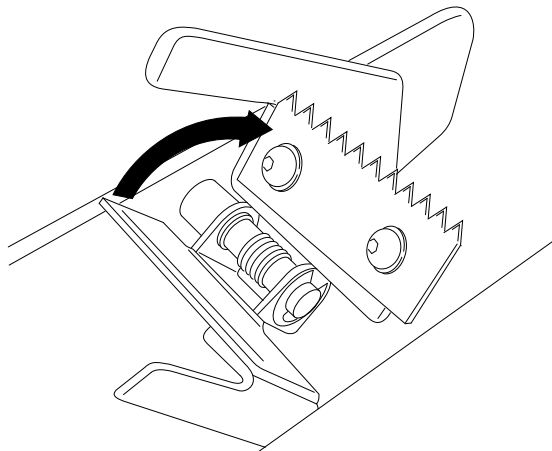
Install a new knife blade.



Replace mounting screws.



Close knife arm cover.



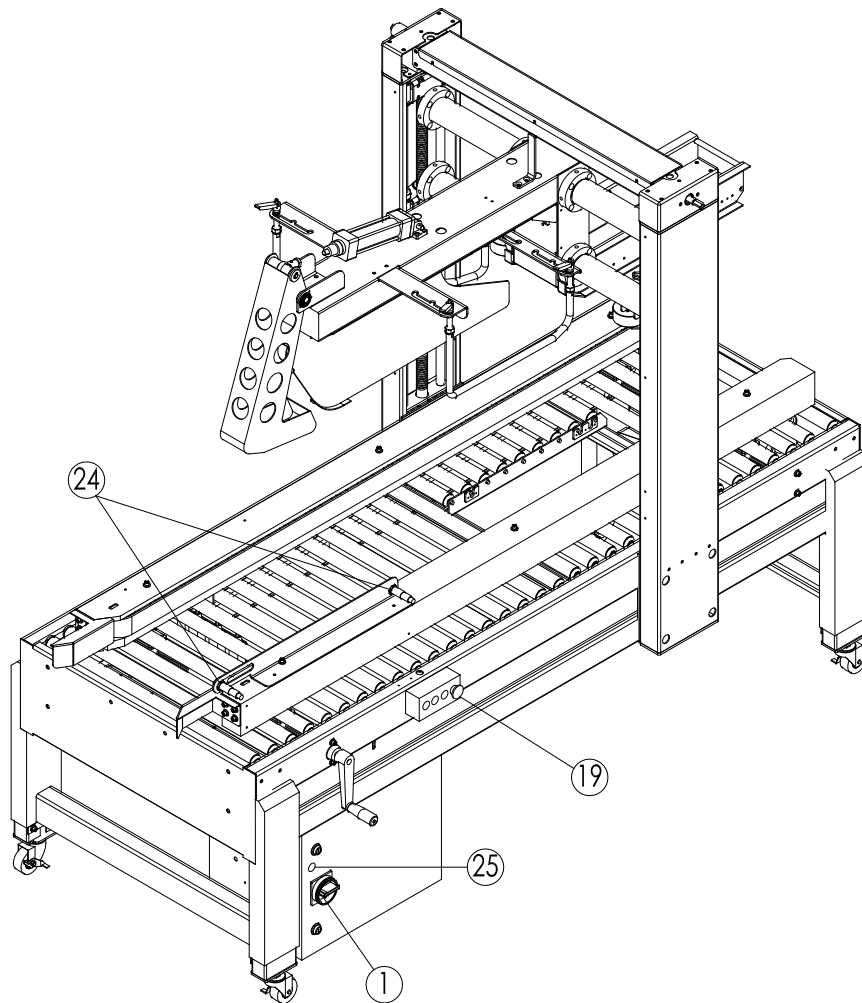
Plug in and turn on the SB-2/3EX-SEMI Case Taper to resume operation.

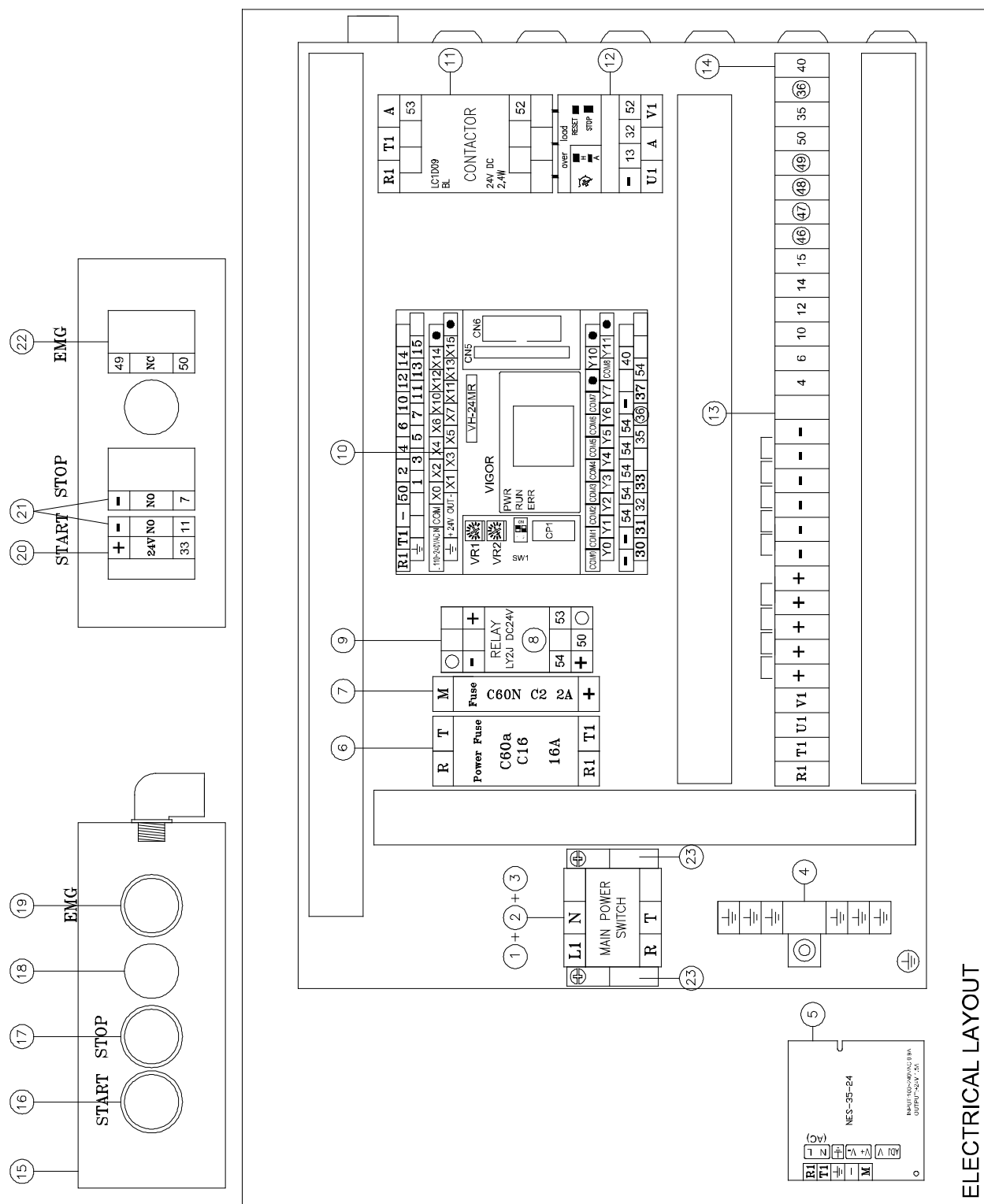
Trouble Shooting

Problem	POSSIBILITIES	Solution
If machine is not operating.	The air pressure may not be sufficient.	Adjust the air Pressure.
If the air cylinder on the flap closing system does not work.	Kinked hoses and/or wiring.	Reposition the hoses & wiring.
If the indexing gate (stopper), doesn't operate.	a) Bent or twisted hoses & wiring. b) Defective infeed or exit photo eyes sensors.	a) Re-position hoses & wiring. b) Adjust the position of photo eye, or replace a new one.
If the machine cannot tape cartons.	The side belts are not correctly adjusted for the box size.	Use the width adjustment crank to adjust the side belt width.
Start Button Indicators	START button flashes 1 time.	Normal operation.
	START button flashes 2 times.	The motor is overloaded.
	START button flashes 3 times.	STOP button is on or wiring may be discounted. Check wiring.
	START button does not flash.	(a) Turn on the power, power indication light will be on. (b) Release the E-STOP.

Parts List

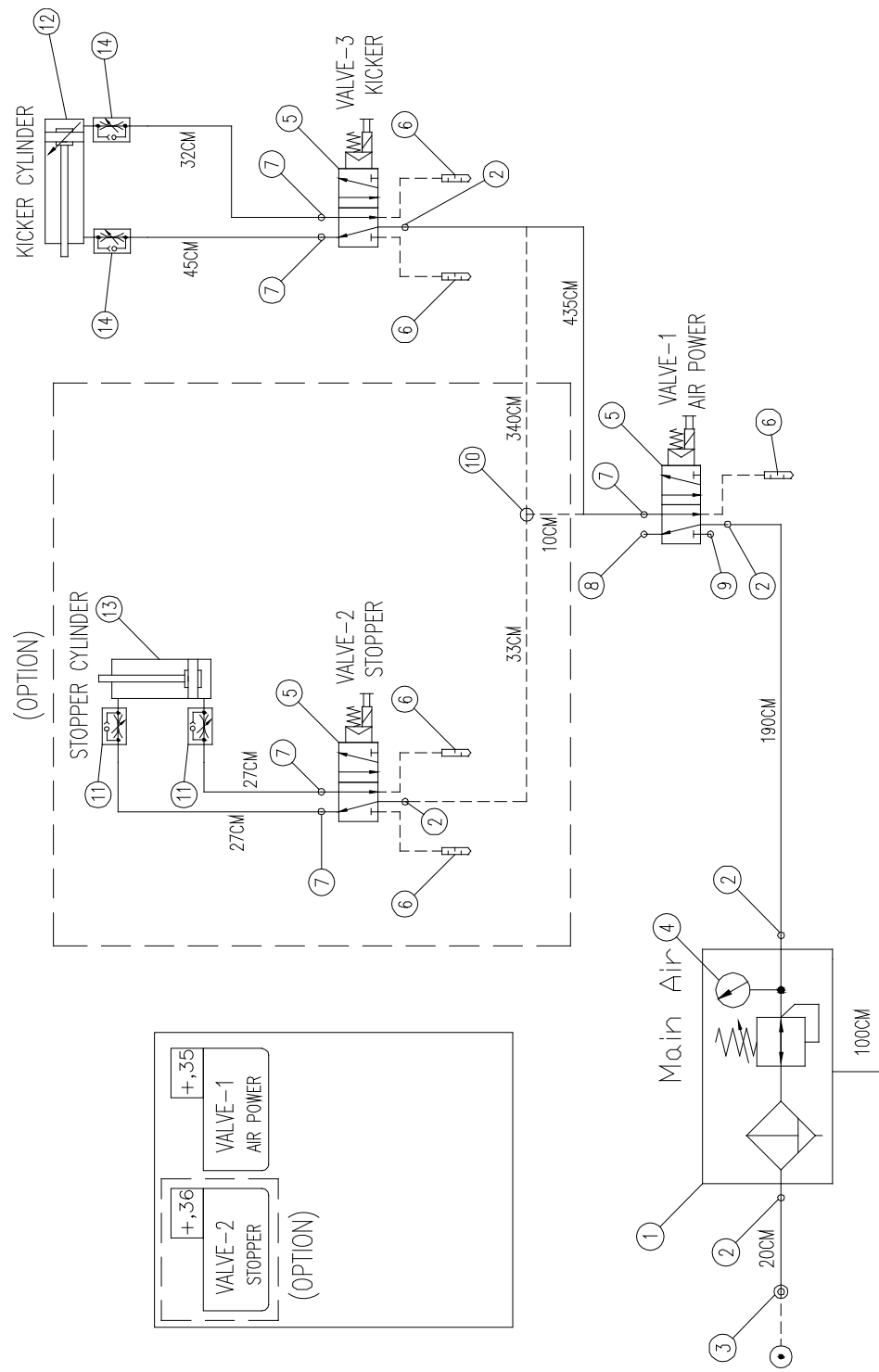
Electrical





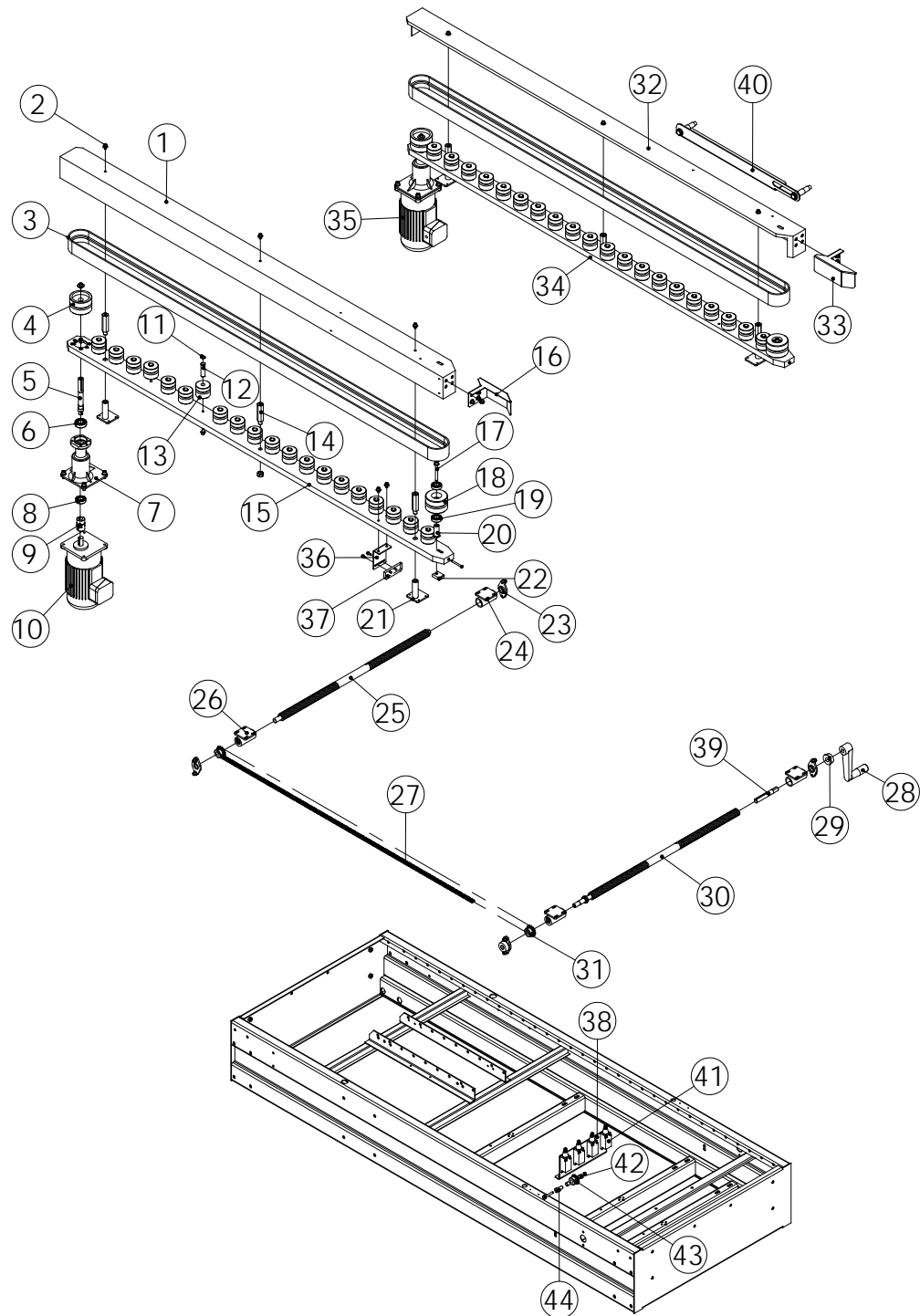
KEY NO	PART NO.	DESCRIPTION	Q'TY
1	71710001-01	SEPARATED POWER → ON/OFF	1
2	71710001-02	LINE SHANK	3
3	71710001-03	LINE SHANK UNITS	3
4	70560601	TERMINAL BLOCKS TB6P	1
5	72810005	POWER SUPPLY NES-35-24	1
6	72571601	POWER FUSE C60A2PC16A	1
7	72570201	POWER FUSE C60N1PC2A	1
8	7270R301	RELAY LY2 DC24V	1
	72710001	FIXED REED PYCA1	2
9	7270B301	RELAY SEAT LY2	1
10	73002002	PLC VIGOR VH-24MR	1
11	72600001	CONTACTOR LC1-D096BL (DC24V)	1
12	71570002-02	THERMAL OVERLOADRELAY(110V)(4~6A)	1
	71570003-02	THERMAL OVERLOADRELAY(220V)(2.5~4A)	1
13	7055TC10	TERMINAL POST 28P	1
14	7055TC01	TERMINAL POST 1P	2
15	71840002	ON/OFF SWITCH BOX	1
16	7150AW03	AUTO RUN GREEN LAMP→COVER	1
17	7155AL01	BUTTON RED	1
18	7030HP22	SLEEVE φ22	1
19	7155AS02	EMG.SWITCH	1
20	7151VM02	AUTO RUN GREEN LAMP	1
21	7158ZE01	(START)(STOP)BUTTONSEATCONTACTOR(NOx1)	2
22	7158ZE02	EMG. BUTTON SEAT CONTACTOR NCx1	1
23	71000001	PLATE TBR-F	2
24	7360CD01	PHOTO SENSOR CDR-10X	2
25	7150BVB1	LAMP XB2BVB1C	1

Pneumatic Parts



KEY NO	PART NO.	DESCRIPTION	Q'TY
1	81110002	AIR F.R.L UNITS (MAFR300-8A-D)	1
2	81060105	CCNECTOR (PL8-02)	5
3	81060100	CCNECTOR MPP-20	1
4	81040001-1	PRESSURE GAUGE	1
5	81090001	SOLENOID VALVE	3
6	81100101	BRASS SILENCER	5
7	81060120	CCNECTOR (PC8-02)	5
8	81150001	PLUG(1/4")	1
9	81150002	PLUG (1/8")	1
10	81050005	CCNECTOR (PE8)	1
11	81060127	CCNECTOR (JSC8-01A)	2
12	81010002	ISO CYLINDER(MCQV-11-40-100)	1
13	81010113	ISO CYLINDER (MCMA-11-32-30A)	1
14	81060133	CCNECTOR JSC8-02A	2

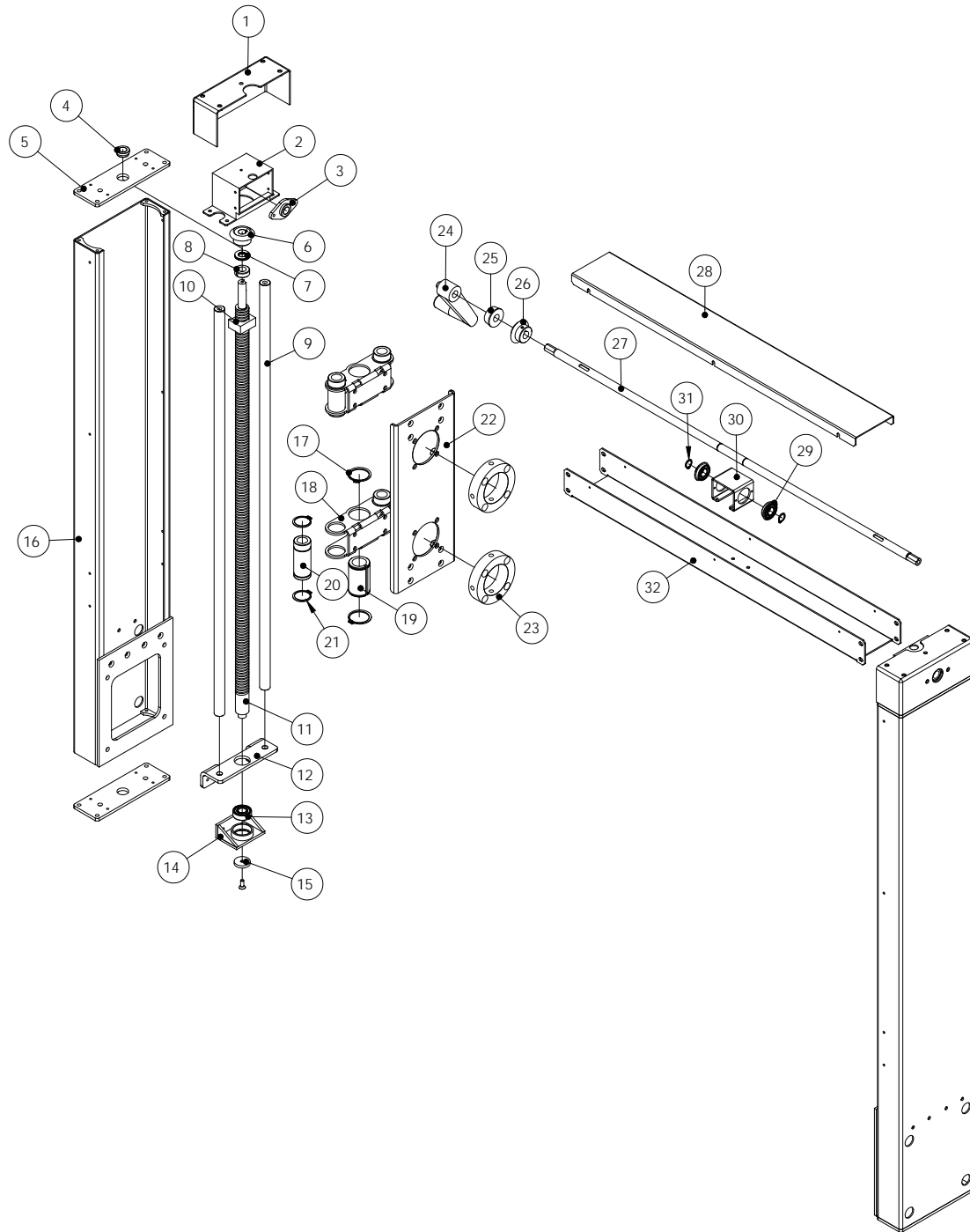
Side Belt



KEY NO	PART NO.	DESCRIPTION	Q'TY
1	KA110887L0	BELT COVER	1
2	10250612	SCREW M6*12L	6
3	CE300500	BELT	1
4	CA301900	PULLEY DRIVER	2
5	CA30250A	MOTOR SHAFT	2
6	30302031	BEARING 6203	2
7	CA302900	MOTOR SEAT	1
8	30300030	BEARING 6003ZZ	2
9	CA303000	UNIVERSAL JOINT	2
10	745111L1	MOTOR 110V/60HZ,T18:1	1
	745122L1	MOTOR 220V/60HZ,T18:1	
	745122L2	MOTOR 220V/50HZ,T15:1	
	745124L2	MOTOR 240V/50HZ,T15:1	
	745138L1	MOTOR 380V/50HZ,T15:1	
	745140L1	MOTOR 400V/50HZ,T15:1	
11	11301400	RING S-14	40
12	CA301400	PULLEY SHAFT	40
13	CA301300	PLASTIC PULLEY	40
14	CE300800	SPEDIAL SCREW	6
15	CE3002L0	SUPPORT COLUMN	1
16	CA3010L0	GUIDE PLATE	1
17	10100870	SCREW M8*70L	2
18	CA301100	PULLEY FOLLOWER	2
19	30300030	BEARING 6003ZZ	4
20	CA301200	PULLEY SHAFT	2
21	CE300400	SUPPORT SHAFT	4
22	CA301800	ADJUSTMLNT BLOCK	2
23	CA302000	SHAFT SEAT	4
24	CA3015L0	SPINDLE SUPPORT	2
25	CA300800	SPINDLE WIDTH ADJUSTMENT	1
26	CA3015R0	SPINDLE SUPPORT	2
27	3240S35D	CHAIN #35x328	1
28	CA201500	HANDLE CRANK ARM	1
29	CA303200	HANDLE RING	2
30	CA300700	SPINDLE WIDTH ADJUSTMENT	1
31	CA302200	CHAIN SPPOCKET 12T	2
32	KA110887R0	BELT COVER	1

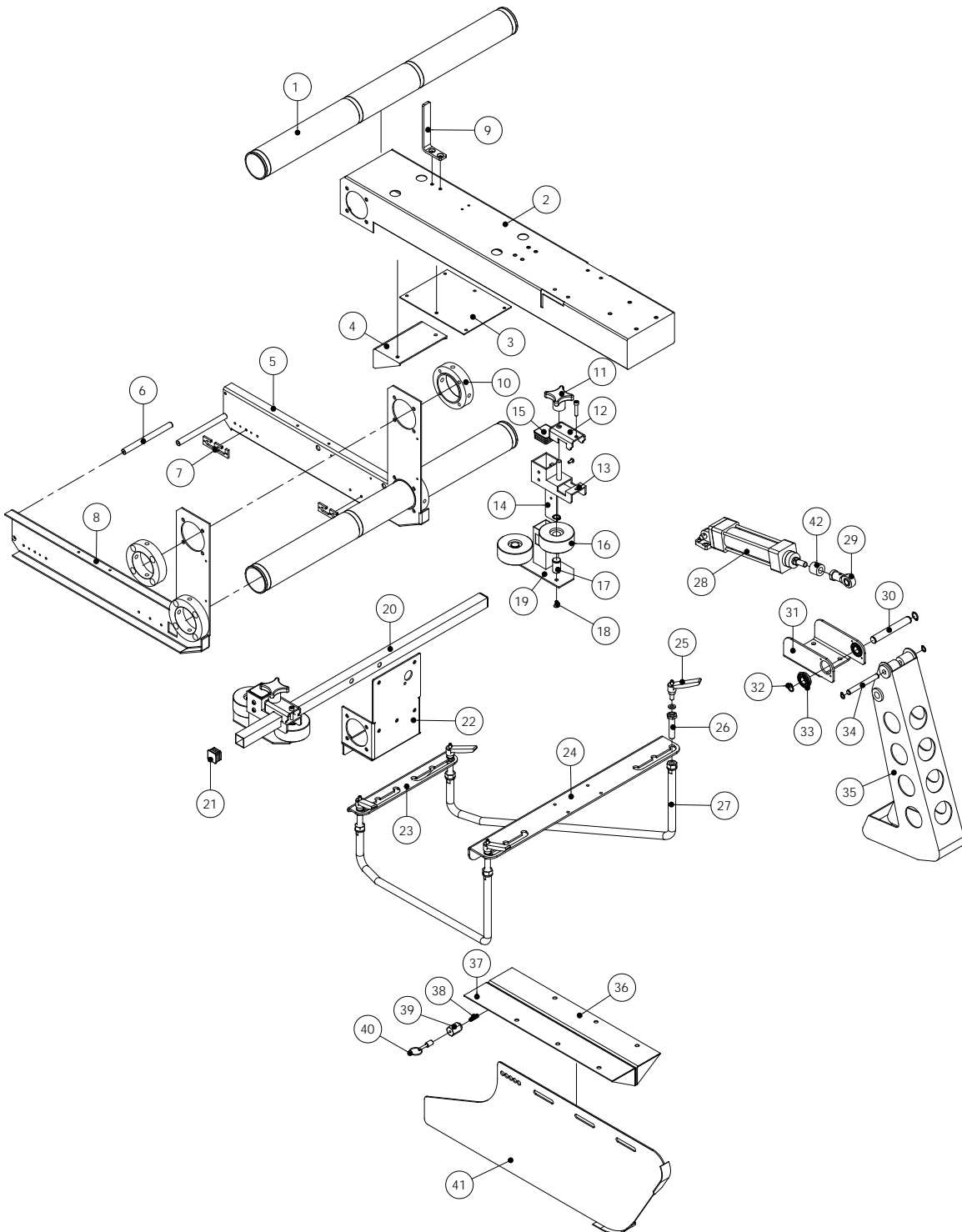
33	CA3010R0	GUIDE PLATE	1
34	CE3002R0	SUPPORT COLUMN	1
35	745111R1	MOTOR 110V/60HZ,T18:1	1
	745122R1	MOTOR 220V/60HZ,T18:1	1
	745122R2	MOTOR 220V/50HZ,T15:1	1
	745124R2	MOTOR 240V/50HZ,T15:1	1
	745138R1	MOTOR 380V/50HZ,T15:1	1
	745140R1	MOTOR 400V/50HZ,T15:1	1
36	KA11086900	ADJUST SEAT	1
37	KA11086800	IMPACT PLATE	1
38	KA11086700	LIMITS SEAT	1
39	CA300900	SHAFT	1
40	KA11088800	PHOTO SENSOR ADJUST SEAT	1
41	7350TZ08	LIMIT VL-8112	4
42	CT212100	BUSH Ø10 x Ø12 x 10L	2
43	CA201600	CHAIN WHEEL	1
44	CA201700	CHAIN WHEEL SHAFT	1

Column



KEY NO	PART NO.	DESCRIPTION	Q'TY
1	KA11109200	COLUMN COVER FRAME	2
2	KA11109000	FIX SEAT	2
3	CA302000	SHAFT SEAT	2
4	CA200200-01	COPPR RING	2
5	KA11108800	TOWER FRAME COVER	4
6	KA31003900	GEAR (S45C) M=1.5, T=30	2
7	30361528	BEARING AXK1528	2
7	3036AS05	WASHER AS1528	4
8	KA03009600	SWITCH CAM	2
9	KA03053900	SHAFT	4
10	CA230900	SCREW (RIGHT)	1
10	CA2309L0	SCREW (LEFT)	1
11	KA030538R0	COLUMN SCREW (RIGHT)	1
11	KA030538L0	COLUMN SCREW (LEFT)	1
12	KA11108900	FIX SEAT	2
13	30302020	BEARING 6202ZZ(CWB)	2
14	CE201000	COLUMN BEARING SEAT	2
15	KA1100370	WASHER	2
16	KA11108700	COLUMN	2
17	11304000	C-RIGN S-40	4
18	KA11109300	BRACKET	4
19	KA030542R0	SCREW (RIGHT)	1
19	KA030542L0	SCREW (LEFT)	1
20	3110LM20	LINEAR MOTION BEARING LM-20UU	8
21	11303200	C-RING S-32	8
22	KA11109400	BRACKET BASE	2
23	KA03054100	SWITCH CAM	4
24	KA0400370	CRANK HANOLE	1
25	CA303200	HANDLE RING	2
26	KA31005700	GEAR (POM)M=1.5,T=30	2
27	KA03054000	TRANSMISSION SHAFT	1
28	KA11109600	COVER FRAME (TOP)	1
29	3030002N	BEARING 6002ZZ-NR(CWB)	2
30	KA11113100	FIX SEAT	1
31	113001500	C-RINGS-15	2
32	KA11109500	COVER FRAME	1

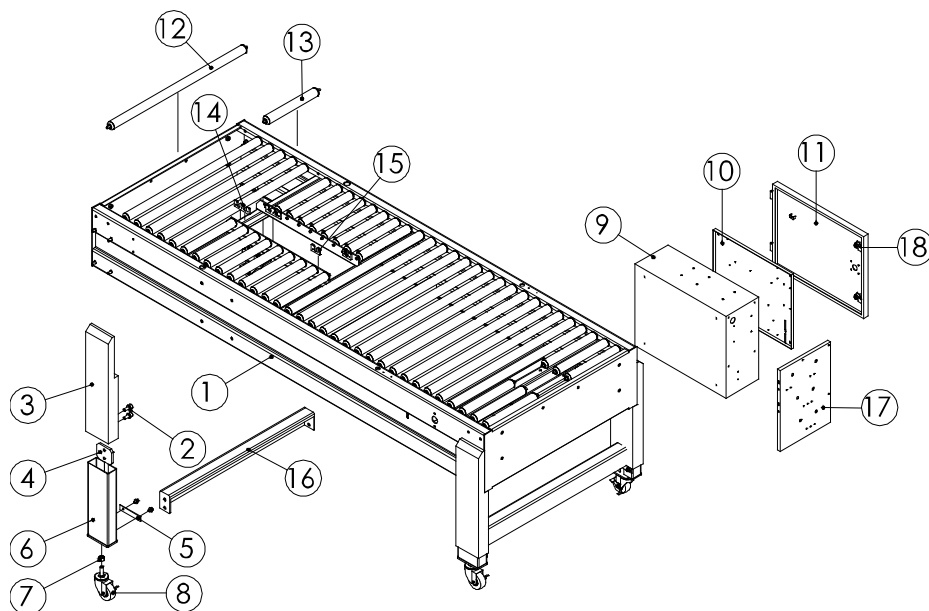
Flap Guide Assembly



KEY NO	PART NO.	DESCRIPTION	Q'TY
1	KA03065400	SUPPORT BAR	2
2	KA11084800	FOLDING DEVICE SEAT	1
3	KA11085200	SUPPORT PLATE	1
4	KA11086100	SUPPORT SEAT	1
5	KA110853L0	UPPER TAPE HEAD SEAT (LEFT)	1
6	KA03065600	CONNECT BAR	2
7	CA100300	B PLATE	4
8	KA110853R0	UPPER TAPE HEAD SEAT (RIGHT)	1
9	KA11090400	TUBE FIXED SEAT	1
10	KA03054100	FIXED RING	4
11	CA101600	HANDLE KNOB M10x63	2
12	KA11086400	LOCKING COVER	2
13	KA11086200	LOCKING SEAT	2
14	KA11086500	LOCKING PLATE	2
15	91350003	RUBBER COVER	2
16	CA100600	COMPRESSION ROLLER	4
17	CA100700	COMPRESSION ROLLER SHAFT	4
18	10140612	SCREW M6x12L	4
19	CA100500	COMPRESSION ROLLER SEAT	2
20	CA101000	SUPPORT BAR	1
21	91350001	RUBBER COVER 1"	2
22	KA11085500	CONNECT SEAT	1
23	KA11086000	FOLDING DEVICE SEAT	1
24	KA11085800	FOLDING DEVICE BRACKET	1
25	KA04006800	FIXED HANDEL	4
26	KA03042900	FIXED SCREW	4
27	KA03042000	FOLDING DEVICE	2
28	81010002	D ISO CYLINDER MCQV-11-40-100	1
28	81070003	CB CYLINDER BASE MCQV CB-B40	1
28	81070003-1	CB PIN-CB-AL40	1
29	81060002	ROD END PHS12EC M12x1.25	1
30	KA03041900	ARM SHAFT	1
31	KA11085600	FOLDING ARM SEAT	1
32	11301500	C-RING S-15	2
33	3030002N	BEARING 6002ZZ-NR(CWB)	2
34	KA03041800	CYLINDER CONNECT SHAFT	1

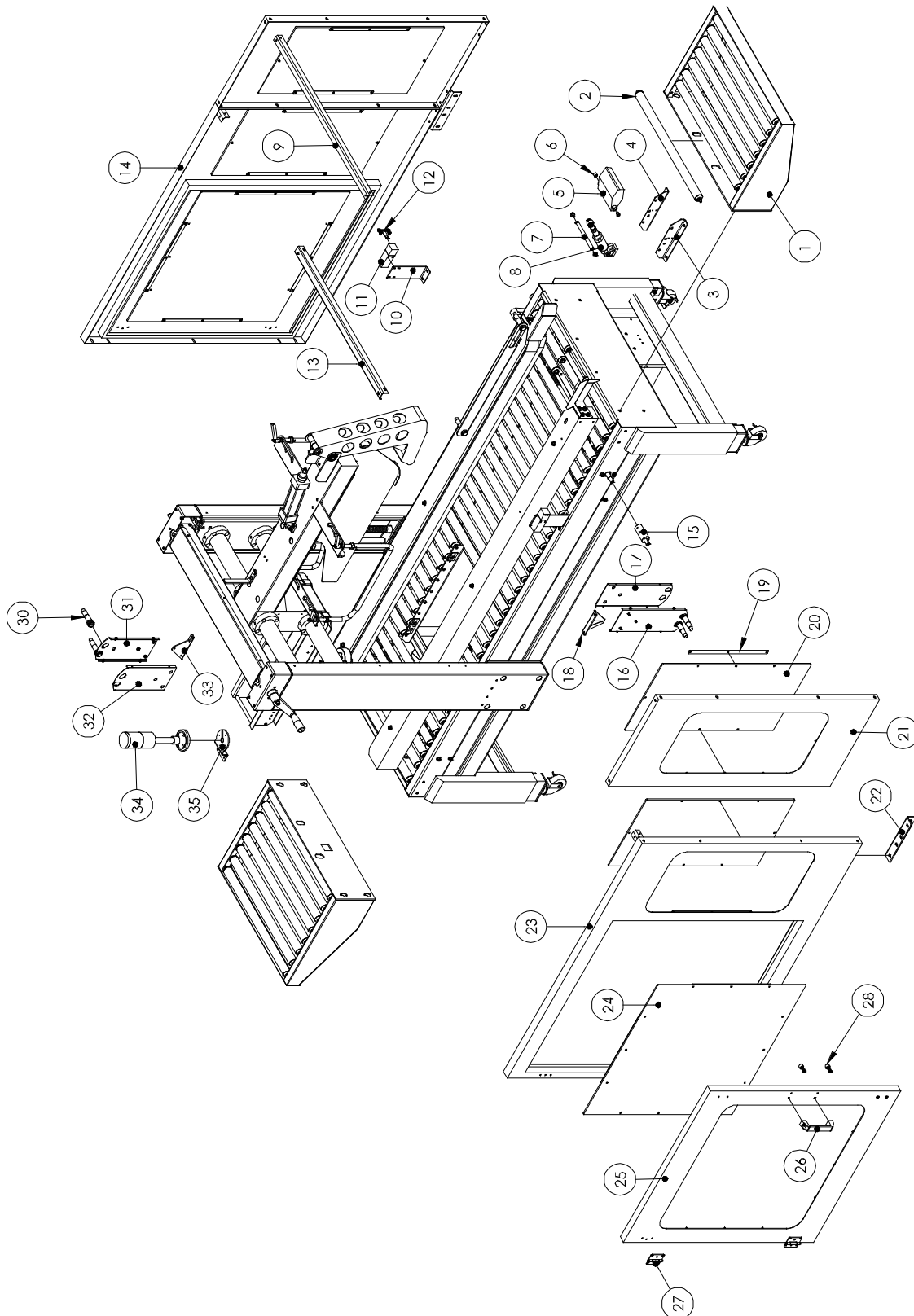
35	KA11085700	FOLDING ARM	1
36	KA111161R0	FLAP DIVIDER SUPPORT	1
37	KA111161L0	FLAP DIVIDER SUPPORT	1
38	KA04010100	PRESS SPRING	1
39	KA03055300	FIXED SEAT	1
40	KA03055200	FIXED PIN	1
41	KA11085400	FLAP DIVIDER	1
42	KA30013000	BUFFER	1

Machine Body



KEY NO	PART NO.	DESCRIPTION	Q'TY
1	KA11087200	MACHINE FRAME	1
2	10250612	SCREW M6*12L	8
3	KA11087000	MACHINE LEG	4
4	KA11084000	CLAMP	4
5	KA11083900	FEXED PLATE	4
6	KA11080900	ADJUSTABLE LEG	4
7	10301201	NUTN 1/2"	4
8	KA04012600	CASTER	4
9	CC400200	CONTROL BOX	1
10	CC400500	WIRING PLATE	1
11	CC400300	CONTROL BOX DOOR	1
12	CA302400	ROLLER(LONG)	24
13	CA302300	ROLLER(SHORT)	18
14	CA33070A	B-PLATE	2
15	CA33060A	A-PLATE	2
16	KA11087300	SUBSIDYLEG	2
17	CC302700	RADIOTUBE PLATE	1
18	PA201800-01	LOCK	2
18	PA201800-02	KEY	2
18	PD400610	PLATE	2

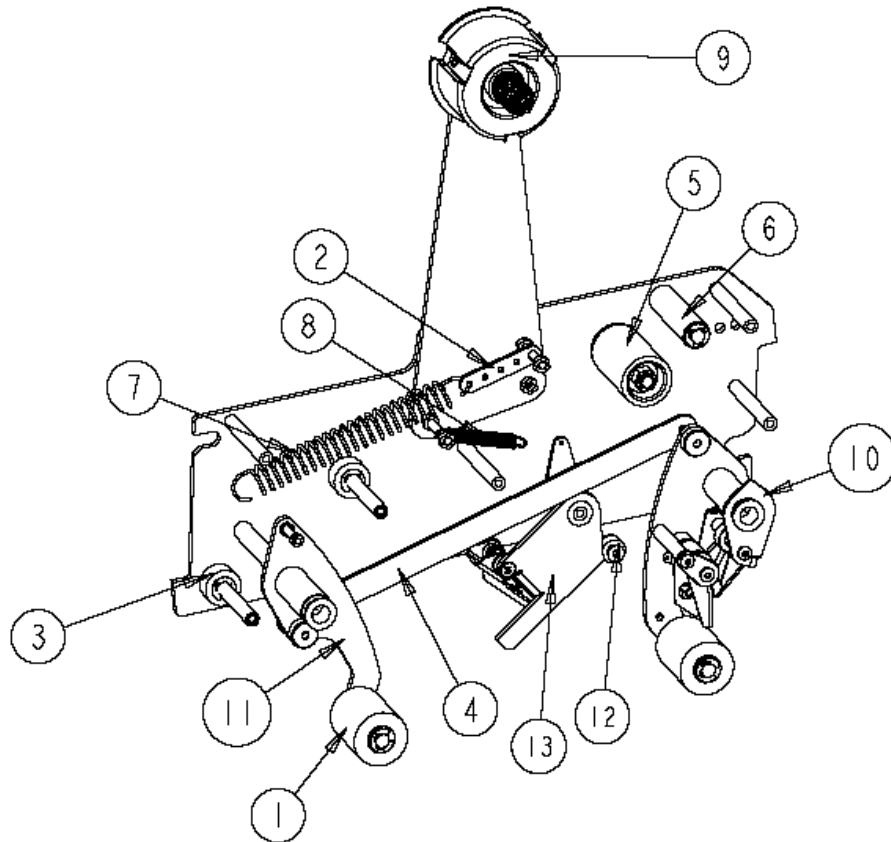
Optional Door



KEY NO	PART NO.	DESCRIPTION	Q'TY
1	CC430100	INFEED/OUTFEED TABLE FRAME	2
2	CA400200	ROLLER ASSY.	16
3	KA110878L0	INDEXOR SEAT (L)	1
4	KA110878R0	INDEXOR SEAT (R)	1
5	KA11088200	INDEXOR SEAT	1
6	31001012	BUSHING LFB-1010	2
7	CC301900	INDEXOR SEAT SHAFT	1
8	81070001	U-SHAPE SLING BRACKET+SDB SHAFT M32	1
8	KA3000800	BUFFER TUBE	1
8	81010113	MINI CYLINDER	1
8	81060001	ROD END PHS10 M10x1.25	1
9	KA11087700	DOOR SUPPORT	1
10	KA11124000	SAFETY SWITCH SEAT	2
11	7365P002	SAFETY SWITCH XCSPA791	2
12	PB400400	SAFETY SWITCH KEY	2
12	PA202100	SPRING 0.5 X 6.2 X 17,8 (SUS)	4
13	KA11087600	DOOR SUPPORT	1
14	KA110879R0	SAFETY DOOR FRAME(R)	1
15	CE301700	EXTENDED SHAFT BUSH	2
16	KA1106780	PHOTO EYE SENSOR SUPPORT (INNER)	1
17	KA1106790	PHOTO EYE SENSOR SUPPORT (OUTTER)	1
18	KA1106770	FIXED SUPPORTING SEAT	1
19	KA1103770	PLATE	16
20	KA30018900	ACRYLIC DOVER	4
21	KA11088100	DOOR	2
22	KA11087400	SUPPORTING PLATE	2
23	KA110879L0	SAFETY DOOR FRAME (L)	1
24	KA30018800	ACRYLIC DOOR	2
25	KA11088000	DOOR	2
26	CE400700	DOOR HANDLE	2
27	PD400520	HINGE (R)	2
27	PD400520-L	HINGE (L)	2
28	CE401000	MAGNET	4
30	7360CD02	PHOTO EYE SENSOR	4
31	KA11056010	PHOTO EYE SENSOR SUPPORT (INNER)	1
32	KA11056110	PHOTO EYE SENSOR SUPPORT (OUTTER)	1
33	KA1106770	SUPPORTING FIXED SEAT	1
34	KA0000410	ALARM LIGHT SET	1
35	KA11109100	ALARM LIGHT SEAT	1

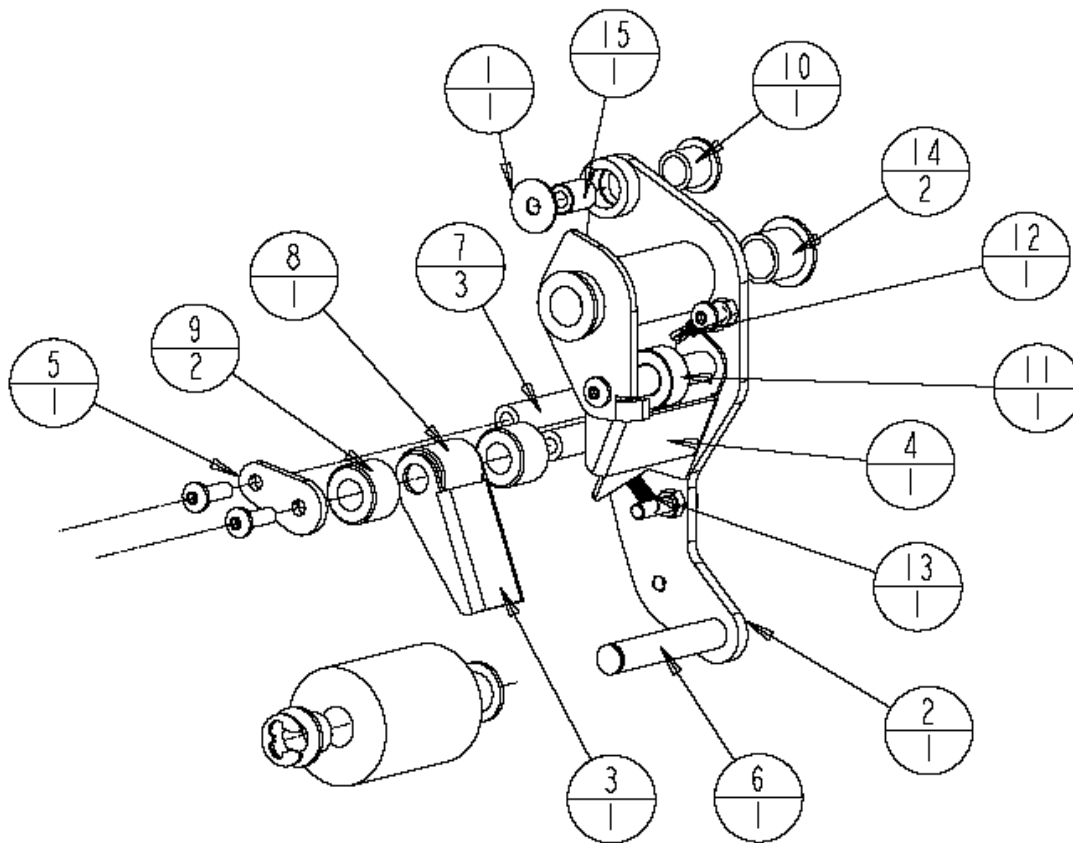
Tape Cartridge

Parts Listed for 2" tape head. Call for 3" parts reference.



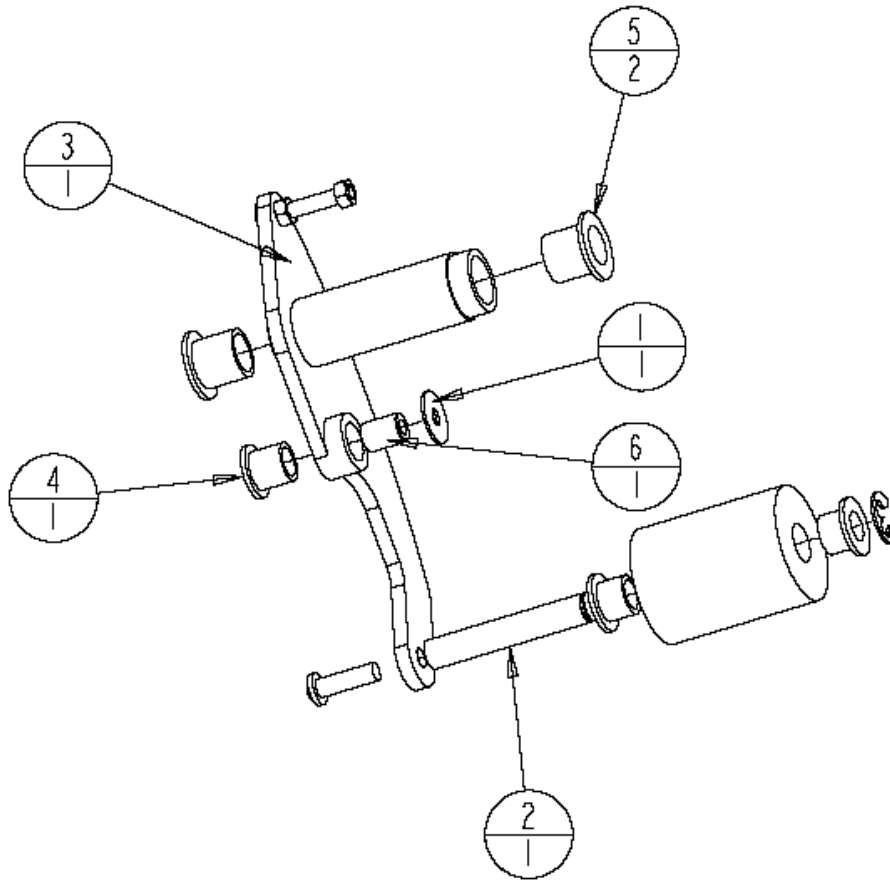
1	2	5000091	ASSY-2" WIPE ROLLER	C22-21-015
2	1	5000085	SPRING ADJUSTER, MAIN	C22-20-065
3	1	5000082	ASSY-SPACER, BASE PLATE	C22-20-083
4	1	5000097	FAB-CONNECTING LINK	C22-21-061
5	1	5000837	ASSY-2" CLUTCH ROLLER	CRA-15
6	1	5000141	ASSY-IDLER ROLLER 2" CARTRIDGE	IR-2AS
7	1	5000824	SPRING MAIN	P12
8	1	5000822	SPRING KNIFE ARM	P13
9	1	5000688	ASSY-TAPE CORE, 2" C22	TC201
10	1	5000019	ASSY-FRONT ARM 2" CARTRIDGE	
11	1	5001209	ASSY-REAR ARM, 2" CARTRIDGE	
12	1	5001210	ASSY-KNIFE ARM STOP	
13	1	5000107	ASSY-2" KNIFE ARM	KA-2
PART	QTY	MODEL PART NO.	DESCRIPTION	OLD P/N

FRONT ARM ASSEMBLY 5000019



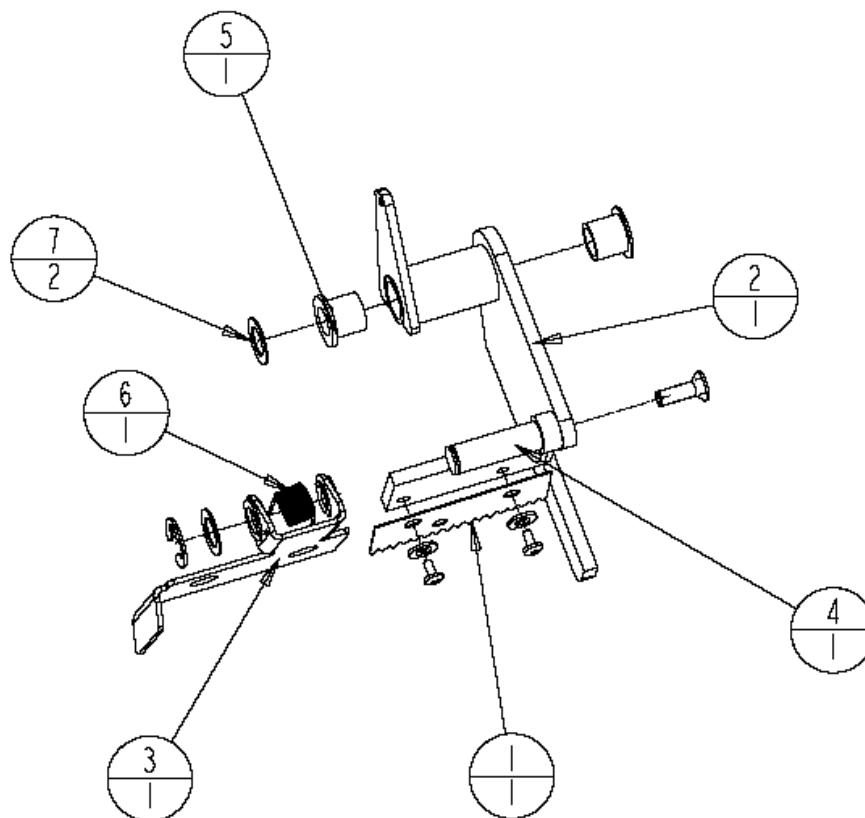
1	1	5000238	WASHER-FLAT SS #10, 11/16"OD	
2	1	5000094	FAB/WELD-FRONT ARM, WELDMENT 2"	C22-21-052
3	1	5000681	FAB-TAPE GUIDE PLATE	C22-21-053
4	1	5000095	FAB-TAPE HOLD PLATE	C22-21-054
5	1	5000682	FAB-FRONT ARM, TOP (ROLLER)	C22-21-057
6	1	5000680	FAB-SHAFT, ROLLER PIVOT	C22-21-071
7	3	5000100	MACH-TAPE PLATE PIVOT SHAFT	C22-21-072
8	1	5000101	FAB-GUIDE ROLLER, CENTER	C22-21-073
9	2	5000102	FAB-GUIDE ROLLER, SIDE	C22-21-074
10	1	5000868	BUSHING-FLANGED 3/8"ID, 1/2"OD	P1
11	1	5000817	SET SCREW SHAFT COLLAR 3/8" ID	P11
12	1	5000821	SPRING FINGER PLATE	P14
13	1	5000830	TAPE GUIDE SPRING	P15
14	2	5000816	BUSHING-FLANGE 1/2"ID, 5/8"OD	P2
15	1	5000825	BUSHING-PLAIN 3/8"ODX.197"ID	P4
PART	QTY	MODEL PART NO.	DESCRIPTION	OLD P/N

REAR ARM ASSEMBLY 5001209



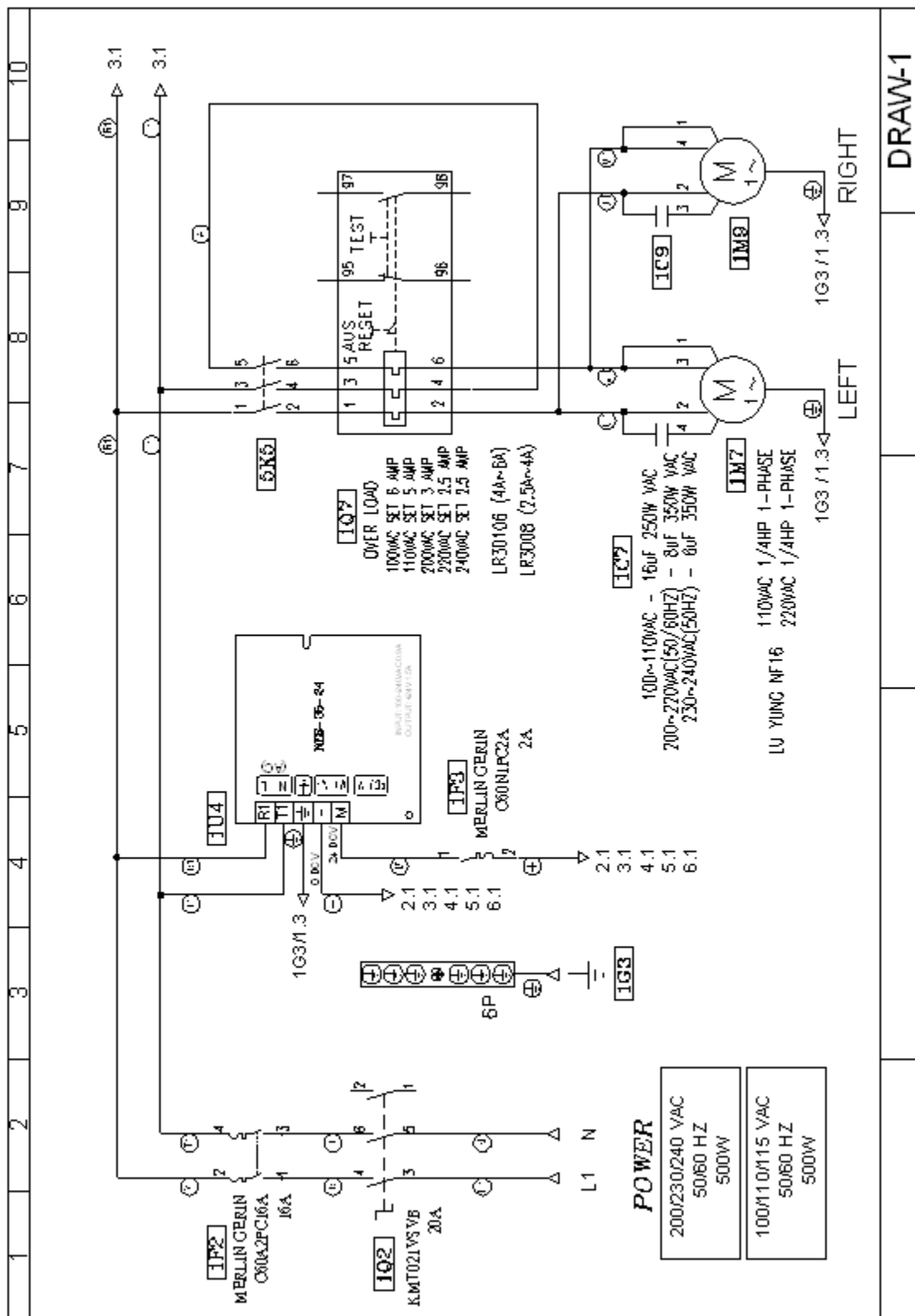
1	1	5000238	WASHER-FLAT SS #10, 11/16"OD	
2	1	5000680	FAB-SHAFT, ROLLER PIVOT	C22-21-071
3	1	5000105	REAR ARM, WELDMENT	C22-22-060
4	1	5000868	BUSHING-FLANGED 3/8"ID, 1/2"OD	P1
5	2	5000816	BUSHING-FLANGE 1/2"ID, 5/8"OD	P2
6	1	5000825	BUSHING-PLAIN 3/8"ODX.197"ID	P4
PART	QTY	MODEL PART NO.	DESCRIPTION	OLD P/N

KNIFE ARM ASSEMBLY 5000107

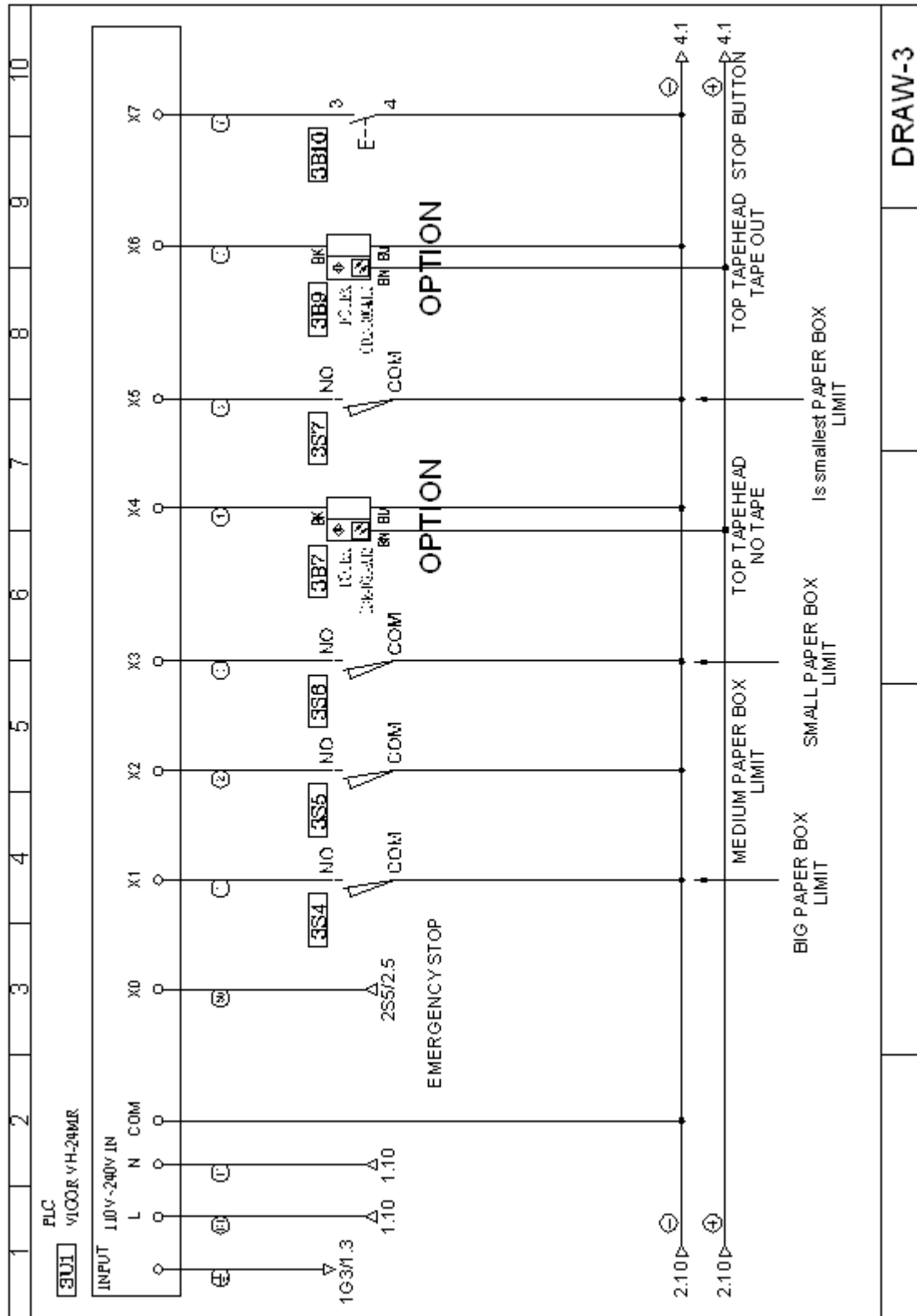


1	1	5000079	KNIFE BLADE 2"	BL201
2	1	5000841	FAB/WELD-KNIFE ARM (OLD STYLE)	C22-23-067
3	1	5000108	FAB-2" KNIFE GAURD	C22-23-068
4	1	5000112	KNIFE GAURD PIVOT SHAFT 2"/13"	C22-23-081
5	1	5000868	BUSHING-FLANGED 3/8"ID, 1/2"OD	P1
6	1	5000823	SPRING KNIFE COVER	P16
7	2	5000334	WASHER-FLAT, 3/8 SUP THN, SS	
PART	QTY	MODEL PART NO.	DESCRIPTION	OLD P/N

Appendix A: Electrical Schematic

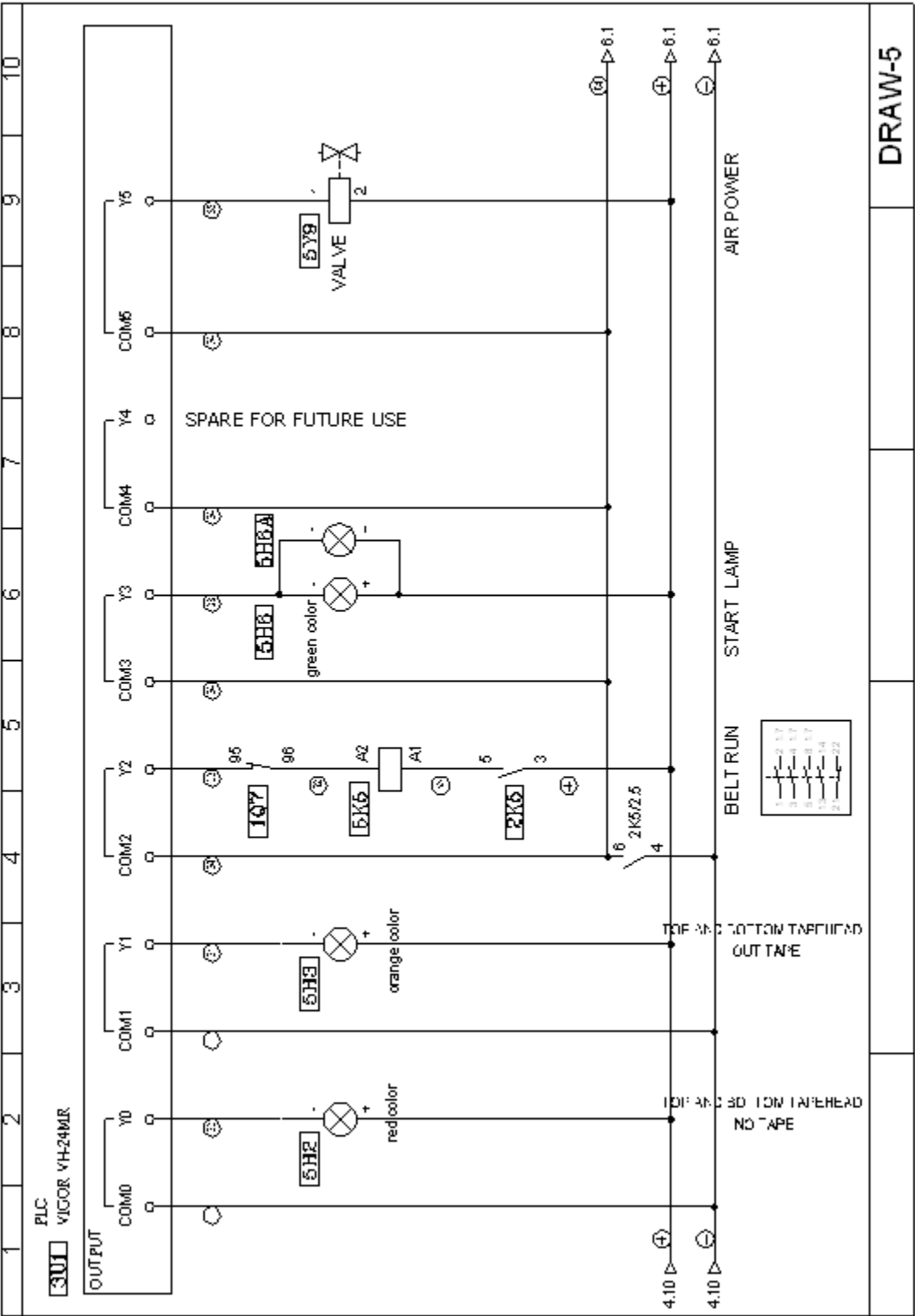


Electrical Schematic Cont.



Electrical Schematic Cont.

Electrical Schematic Cont.



DRAW-5

Warranty Statement

SB-2/3EX-SEMI Carton Sealing Machine

Warranty Statement

Eastey Enterprises warrants that all of the products it ships will be in good working order and free from defects in material and workmanship and will conform to the published specifications for that product.

Warranty Period

Drive motor(s):	1 year
Gear reducer:	1 year
Tapehead:	1 year (Except for moving parts which are subject to normal wear, tear and replacement which are warranted to be free from defects in material and workmanship.)
All other parts:	1 year (Except for moving parts which are subject to normal wear, tear and replacement which are warranted to be free from defects in material and workmanship.)

Taping Quality

Taping quality achieved in a given application is dependent on the installation, the material handling, and the maintenance provided. Eastey makes no warranty that the print quality achieved in an application will be the same as that achieved on a test piece in our laboratory.

Shipping Policy

Customer pays all incoming shipping. If the item is defective and under warranty, Eastey pays return shipping charges for least costly method. If expedited shipping is desired, customer must furnish his shipping account and shipping fees will be charged to that account.

Warranty Verification

If you conclude that a product may be defective and may be covered by warranty, obtain a Return Material Authorization number and return the defective item to Eastey. Eastey will analyze the product and, if found to be defective, we will, at our option, replace or repair the item. If the item is found to not be eligible for warranty, you will be notified and may decide on disposition. Defective products will be replaced or repaired as promptly as possible.

Warranty Eligibility

The warranty provided by Eastey Enterprises, Inc. is only to the original buyer.

Limited Warranty

THE ABOVE WARRANTY IS EXCLUSIVE AND IN LIEU OF ALL OTHER WARRANTIES, WHETHER EXPRESSED OR IMPLIED, INCLUDING THE IMPLIED WARRANTIES OF MERCHANTABILITY, FITNESS FOR A PARTICULAR PURPOSE AND NONINFRINGEMENT.

Disclaimer of Damages

REGARDLESS OF WHETHER ANY REMEDY SET FORTH HEREIN FAILS OF ITS ESSENTIAL PURPOSE, IN NO EVENT WILL EASTEY ENTERPRISES, INC. BE LIABLE FOR ANY SPECIAL, CONSEQUENTIAL, INDIRECT OR SIMILAR DAMAGES, INCLUDING LOST PROFIT OR LOST OPPORTUNITIES OF ANY TYPE ARISING OUT OF THE USE OR INABILITY TO USE THESE PRODUCTS EVEN IF EASTEY ENTERPRISES, INC. HAS BEEN ADVISED OF THE POSSIBILITY OF SUCH DAMAGES.

Customer Support

Eastey Technical Service

For help setting up or operating the SB-2/3EX-SEMI Semi-Automatic Carton Sealer, please contact Eastey Technical Service at one of the numbers listed below.

Toll-Free Phone	800-877-5658
Phone	763-795-8856
Fax	763-795-8867
E-mail	info@eastey.com
Web	www.eastey.com

Thanks again for your purchase of Eastey products. We are pleased to be a part of your packaging needs.

The logo features a stylized, black, flame-like or feather-like graphic element positioned above the letter 'A' in the word 'EASTY'.

EASTY®